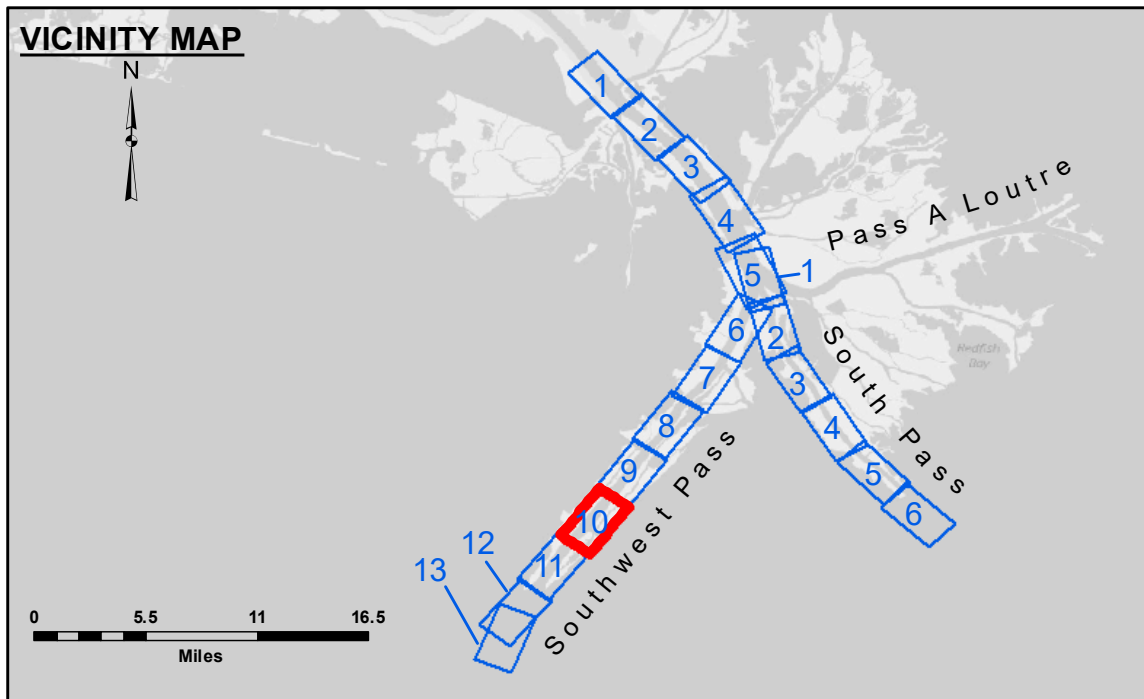


**CUTTERHEAD DREDGE CAPTAIN FRANK
DREDGING MILE 13.7 BHP TO MILE 17.8 BHP
EAST HALF OF THE CHANNEL**



LEGEND

Federal Navigation Channel	Cable Area	Borrow Area	-10' and above
Federal Navigation Center Line	Placement Area	Shoalest Sounding**	-10' to -20'
As-built Pipeline/Cable	Anchorage Area	Beacon, General	-20' to -30'
Unconfirmed Pipeline/Cable	Obstruction Point	Red Navigation Buoy	-30' to -40'
Project Depth Contour	Wrecks-Submerged	Green Navigation Buoy	-40' to -45'
			-45' to -48.5'
			-48.5' to -55'
			-55' and below

Gage Reading: 1.5 MLLW @ LIGHT-14 @ 1320
Sea Conditions: CALM
Vessel Name: BEAUVAIS
Survey Type: CONDITION, SB
Sounding Frequency*:** LOW

Vertical Datum:
 Soundings are shown in feet and indicate depths below Mean Lower Low Water (MLLW, 07-11).
 Datum Relationships for gage 01625 as of July 2015:
 0.0' NAVD86 = 0.39' MLLW = 3.89' MLG

Scale: 0 to 2,500 Feet

NOTES:
 Horizontal Coordinate System:
 North American Datum of 1983 (NAD83), projected to the State Plane Coordinate System (SPCS), Louisiana South Zone. Distance units in U.S. Survey Feet.
 Vertical Datum:
 Soundings are shown in feet and indicate depths below Mean Lower Low Water (MLLW, 07-11).
 Datum Relationships for gage 01625 as of July 2015:
 0.0' NAVD86 = 0.39' MLLW = 3.89' MLG
 Distances on the Mississippi River, above and below Head of Passes are shown at 1 mile intervals.
 The location of navigation aids are base on and provided by the U.S. Coast Guard.
 2016 Aerial Photography data source: Precision Aerial Reconnaissance, LLC (1998 DOQQ in green)
 Reference is N.O.A. Navigation Chart No. 11361.
 ** Shoalest Sounding per Quarter per Reach.
 *** High frequency (200 kHz) survey data represents the first signal return at a sounding location and will include suspended solids, known as "fluff", if present. Low frequency (24 kHz) survey data normally penetrates through this "fluff" layer to depict elevations of consolidated bottom material. Low frequency accuracies may vary depending on channel conditions and bathymeter settings.



DISCLAIMER: The United States Government furnishes these data and the recipient accepts and uses them with the express understanding that the data are not warranted for accuracy, reliability, usability, or suitability for any particular purpose of the recipient. The user is responsible for the results and accuracy of any information derived from the data. The user is responsible for the results and accuracy of any information derived from the data. The user is responsible for the results and accuracy of any information derived from the data. The user is responsible for the results and accuracy of any information derived from the data.

**U.S. ARMY CORPS OF ENGINEERS
NEW ORLEANS DISTRICT**

Submitted:	Chart Survey Section
Recommended:	TSS
Approved:	MSK

Surveyed By: LLB & MGF
 Plotted By: TSS
 Checked By: MSK

**MISSISSIPPI RIVER - B.R. TO GULF
SOUTHWEST PASS - SHEET 10
SW_10_SWP_20190307_CS
07 March 2019**

**Sheet Reference Number
10 of 13**

Revision Number:
3.13-20160811