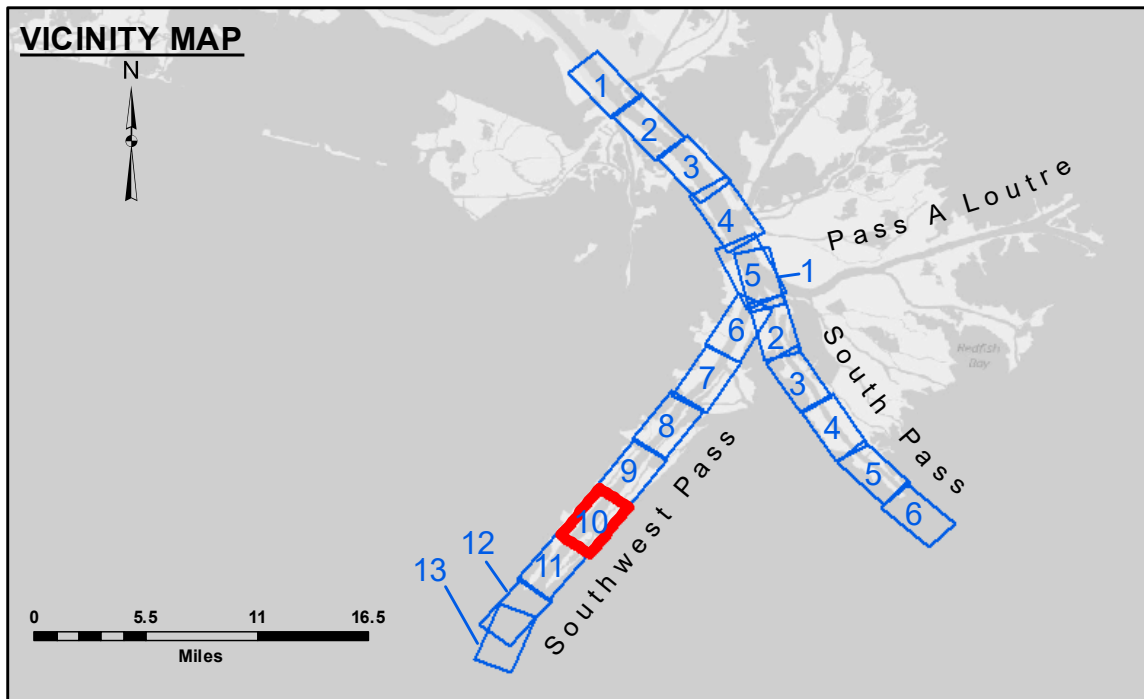


CUTTERHEAD DREDGE CAPTAIN FRANK  
DREDGING MILE 13.7 BHP TO MILE 17.8 BHP  
EAST HALF OF THE CHANNEL



LEGEND			
--- Federal Navigation Channel	● Cable Area	□ Borrow Area	■ -10' and above
— Federal Navigation Center Line	■ Placement Area	● Shoalest Sounding**	■ -10' to -20'
— As-built Pipeline/Cable	□ Anchorage Area	★ Beacon, General	■ -20' to -30'
..... Unconfirmed Pipeline/Cable	⊗ Obstruction Point	◆ Red Navigation Buoy	■ -30' to -40'
— Project Depth Contour	⚓ Wrecks-Submerged	◆ Green Navigation Buoy	■ -40' to -45'
			■ -45' to -48.5'
			■ -48.5' to -55'
			■ -55' and below

Gage Reading: 1.9 MLLW @ LIGHT-14 @ 1320  
 Sea Conditions: CALM  
 Vessel Name: BEAUVAIS  
 Survey Type: CONDITION, SB  
 Sounding Frequency\*\*\*: LOW

Feet  
 0 500 1,000 1,500 2,000 2,500

**NOTES:**  
 Horizontal Coordinate System:  
 North American Datum of 1983 (NAD83), projected to the State Plane Coordinate System (SPCS), Louisiana South Zone. Distance units in U.S. Survey Feet.  
 Vertical Datum:  
 Soundings are shown in feet and indicate depths below Mean Lower Low Water (MLLW, 07-11). Datum Relationships for gage 01625 as of July 2015:  
 0.0' NAVD83 = 0.39' MLLW = 3.89' MGL  
 Distances on the Mississippi River, above and below Head of Passes are shown at 1 mile intervals.  
 The location of navigation aids are base on and provided by the U.S. Coast Guard.  
 2016 Aerial Photography data source: Precision Aerial Reconnaissance, LLC (1998 DOQQ in green)  
 Reference is N.O.A. Navigation Chart No. 11361.  
 \*\* Shoalest Sounding per Quarter per Reach.  
 \*\*\* High frequency (200 kHz) survey data represents the first signal return at a sounding location and will include suspended solids, known as "fluff", if present. Low frequency (24 kHz) survey data normally penetrates through this "fluff" layer to depict elevations of consolidated bottom material. Low frequency accuracies may vary depending on channel conditions and fathometer settings.



**DISCLAIMER:** The United States Government furnishes these data and the recipient accepts and uses them with the express understanding that the data are not warranted for accuracy, reliability, usability, or availability for any particular purpose of the recipient. The user is responsible for the results obtained from the use of the data. The user shall not be held liable for any liability whatsoever to any person by reason of any use of the data. These data are being provided to you as a courtesy of the U.S. Army Corps of Engineers and are not to be used for any purpose other than that for which they were provided. The information depicted on the map represents the results of a survey conducted on the date shown. The information is not to be used to represent the general condition existing at that time.

U.S. ARMY CORPS OF ENGINEERS NEW ORLEANS DISTRICT		
Submitted:	Surveyed By: LLB & MGF	Checked By: MSK
Recommended:	Plotted By: TSS	
Approved:	Chart Survey Section	Chart Waterways Maintenance Section

**MISSISSIPPI RIVER - B.R. TO GULF  
 SOUTHWEST PASS - SHEET 10  
 SW\_10\_SWP\_20190308\_CS  
 08 March 2019**

**Sheet Reference Number  
 10 of 13**