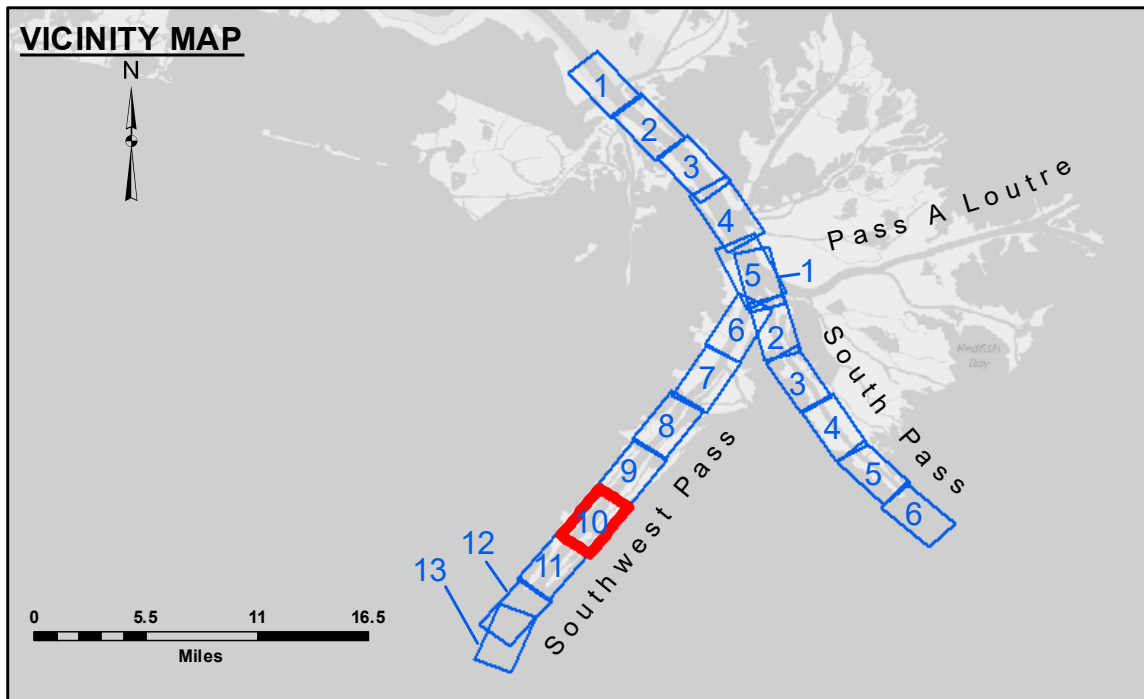


HOPPER DREDGE WHEELER
DREDGING RG 188 - C TO RG 56 - C
FULL CHANNEL WIDTH



LEGEND			
--- Federal Navigation Channel	● Cable Area	□ Borrow Area	■ -10' and above
— Federal Navigation Center Line	□ Placement Area	● Shoalest Sounding**	■ -10' to -20'
— As-built Pipeline/Cable	□ Anchorage Area	★ Beacon, General	■ -20' to -30'
..... Unconfirmed Pipeline/Cable	⊗ Obstruction Point	◆ Red Navigation Buoy	■ -30' to -40'
— Project Depth Contour	⚓ Wrecks-Submerged	◆ Green Navigation Buoy	■ -40' to -45'
			■ -45' to -48.5'
			■ -48.5' to -55'
			■ -55' and below

Gage Reading: 2.10 MLLW @ LIGHT 14 @ 0920
 Sea Conditions: CALM
 Vessel Name: JOHN BOPP
 Survey Type: CONDITION, SB
 Sounding Frequency***: LOW

0 500 1,000 1,500 2,000 2,500 Feet

NOTES:
 Horizontal Coordinate System: North American Datum of 1983 (NAD83), projected to the State Plane Coordinate System (SPCS), Louisiana South Zone. Distance units in U.S. Survey Feet.
 Vertical Datum: Soundings are shown in feet and indicate depths below Mean Lower Low Water (MLLW, 07-11). Datum Relationships for gage 01625 as of July 2015: 0.0' NAVD83 = 0.39' MLLW = 3.89' MLG
 Distances on the Mississippi River, above and below Head of Passes are shown at 1 mile intervals.
 The location of navigation aids are base on and provided by the U.S. Coast Guard.
 2016 Aerial Photography data source: Precision Aerial Reconnaissance, LLC (1998 DOQQ in green)
 Reference is N.O.A. Navigation Chart No. 11361.
 ** Shoalest Sounding per Quarter per Reach.
 *** High frequency (200 kHz) survey data represents the first signal return at a sounding location and will include suspended solids, known as "fluff", if present. Low frequency (24 kHz) survey data normally penetrates through this "fluff" layer to depict elevations of consolidated bottom material. Low frequency accuracies may vary depending on channel conditions and fathometer settings.



DISTRIBUTION LIABILITY: The data represents the results of data collection/processing for a specific US Army Corps of Engineers project. It is only valid for its intended use, content, time and accuracy specifications. The user is responsible for the results of any application of the data for other than its intended purpose.
 Data Constants: Hydrographic survey data is subject to change rapidly due to several factors including but not limited to dredging activities, channel migration, and other factors. The user is responsible for the hydrographical conditions which develop after the date of the survey. The information depicted on the map represents the results of a survey conducted on the date indicated. It is not to be considered a representation of the general condition existing at that time.
 The information depicted on the map represents the results of a survey conducted on the date indicated. It is not to be considered a representation of the general condition existing at that time.

Submitted:	Surveyed By: JH & RCC
Recommended:	Plotted By: LLB
Approved:	Checked By: MSK

U.S. ARMY CORPS OF ENGINEERS
NEW ORLEANS DISTRICT

MISSISSIPPI RIVER - B.R. TO GULF
 SOUTHWEST PASS - SHEET 10
 SW_10_SWP_20200629_CS
 29 June 2020

Sheet Reference Number
 10 of 13
 Revision Number:
 4.1-2019105