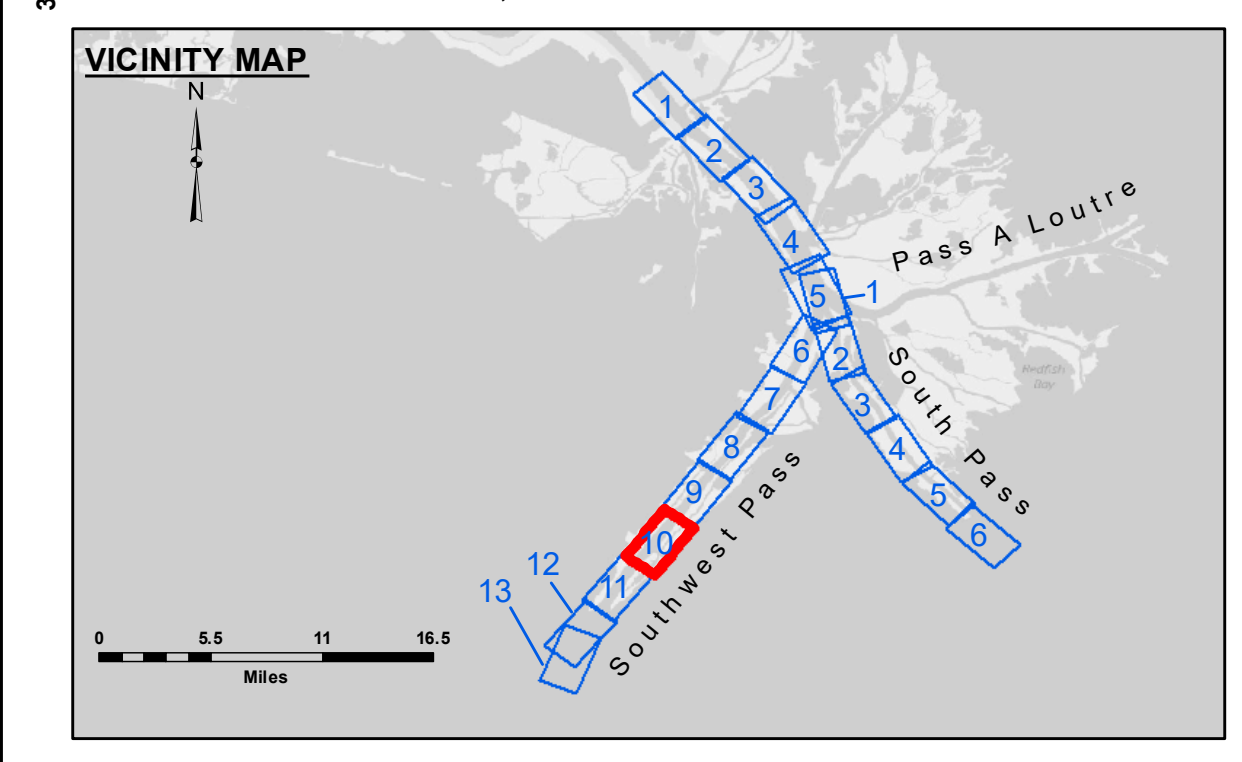


**HOPPER DREDGE WHEELER
DREDGING STA. 675+00 ON SHEET 9
TO STA. 860+00 ON SHEET 10
FULL CHANNEL WIDTH**



LEGEND			
--- Federal Navigation Channel	● Cable Area	□ Borrow Area	■ -10' and above
— Federal Navigation Center Line	■ Placement Area	● Shoalest Sounding**	■ -10' to -20'
— As-built Pipeline/Cable	□ Anchorage Area	★ Beacon, General	■ -20' to -30'
..... Unconfirmed Pipeline/Cable	⊗ Obstruction Point	◆ Red Navigation Buoy	■ -30' to -40'
— Project Depth Contour	⚓ Wrecks-Submerged	◆ Green Navigation Buoy	■ -40' to -45'
			■ -45' to -50'
			■ -50' to -55'
			■ -55' and below

Gage Reading: 1.3 MLLW @ LIGHT 14 @ 0915
 Sea Conditions: CHOPPY
 Vessel Name: BLANCHARD
 Survey Type: CONDITION, SB
 Sounding Frequency***: LOW

NOTES:
 Horizontal Coordinate System: North American Datum of 1983 (NAD83), projected to the State Plane Coordinate System (SPCS), Louisiana South Zone. Distance units in U.S. Survey Feet.
 Vertical Datum: Soundings are shown in feet and indicate depths below Mean Lower Low Water (MLLW, 12-16). Datum Relationships for gage 01625 as of March 2020: 0.0' NAVD83, 2009.55 = 0.40' MLLW = 3.90' MLG
 Distances on the Mississippi River, above and below Head of Passes are shown at 1 mile intervals.
 The location of navigation aids are base on and provided by the U.S. Coast Guard.
 2016 Aerial Photography data source: Precision Aerial Reconnaissance, LLC (1998 DOQQ in green)
 Reference is N.O.A. Navigation Chart No. 11361.
 ** Shoalest Sounding per Quarter per Reach.
 *** High frequency (200 kHz) survey data represents the first signal return at a sounding location and will include suspended solids, known as "fluff", if present. Low frequency (24 kHz) survey data normally penetrates through this "fluff" layer to depict elevations of consolidated bottom material. Low frequency accuracies may vary depending on channel conditions and fathometer settings.



DISCLAIMER: The United States Government furnishes these data and the recipient accepts and uses them with the express understanding that the data are not warranted for accuracy, reliability, usability, or availability for any particular purpose of the recipient. The user is responsible for the results obtained from the use of the data. The user shall not be held liable for any damage or loss, including but not limited to, property damage, personal injury, or death, resulting from the use of the data. The user shall not be held liable for any damage or loss, including but not limited to, property damage, personal injury, or death, resulting from the use of the data. The user shall not be held liable for any damage or loss, including but not limited to, property damage, personal injury, or death, resulting from the use of the data.

U.S. ARMY CORPS OF ENGINEERS NEW ORLEANS DISTRICT		
Submitted:	Surveyed By: JTB & DBD	Plotted By: LLB
Recommended:	Checked By: MSK	Checked By: MSK
Approved:	Sheet, Waterways Maintenance Section	

**MISSISSIPPI RIVER - B.R. TO GULF
SOUTHWEST PASS - SHEET 10
SW_10_SWP_20210505_CS
05 May 2021**

**Sheet Reference Number
10 of 13**

Revision Number:
4.1-20191105