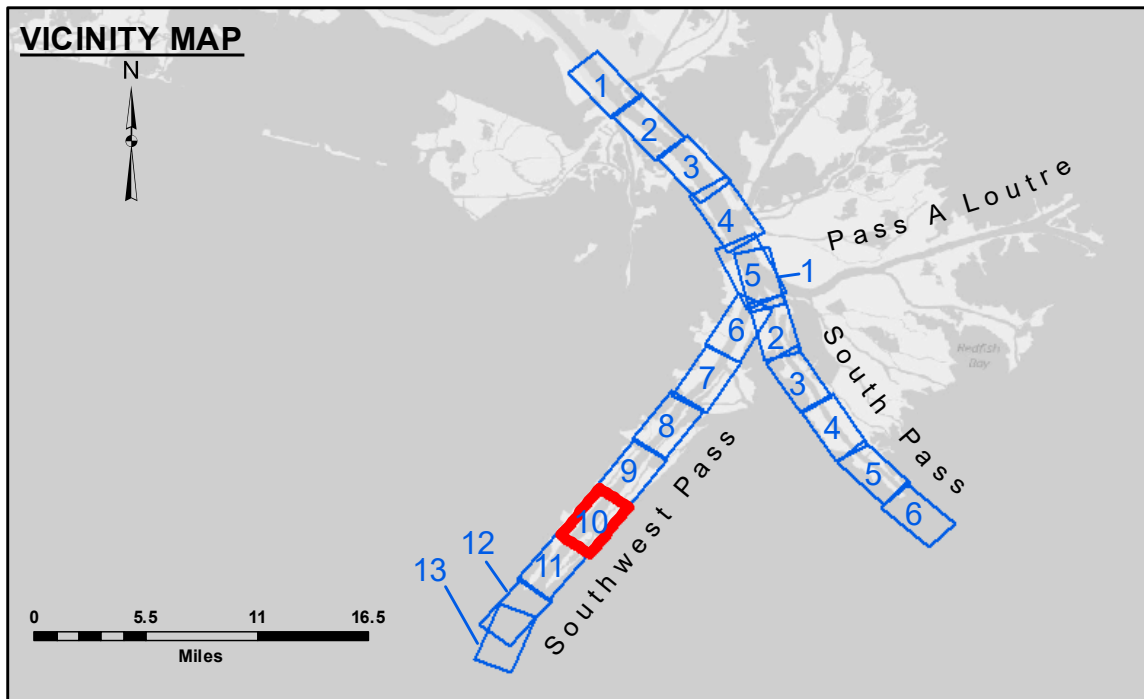


DREDGE WHEELER
DREDGING STATION 715+00 TO STATION 860+00
FULL CHANNEL WIDTH



LEGEND			
	Federal Navigation Channel		Placement Area
	Federal Navigation Center Line		Borrow Area
	As-built Pipeline/Cable		Shoalest Sounding**
	Unconfirmed Pipeline/Cable		Beacon, General
	Project Depth Contour		Red Navigation Buoy
	Cable Area		Green Navigation Buoy
	Anchorage Area		
	Obstruction Point		
	Wrecks-Submerged		
			-10' and above
			-10' to -20'
			-20' to -30'
			-30' to -40'
			-40' to -45'
			-45' to -50'
			-50' to -55'
			-55' and below

Gage Reading: 1.8 MLLW @ LIGHT 14 @ 1120
 Sea Conditions: CALM
 Vessel Name: BLANCHARD
 Survey Type: CONDITION, SB
 Sounding Frequency***: LOW

Feet
 0 500 1,000 1,500 2,000 2,500

NOTES:
 Horizontal Coordinate System: North American Datum of 1983 (NAD83), projected to the State Plane Coordinate System (SPCS), Louisiana South Zone. Distance units in U.S. Survey Feet.
 Vertical Datum: Soundings are shown in feet and indicate depths below Mean Lower Low Water (MLLW, 12-16). Datum Relationships for gage 01625 as of March 2020: 0.0' NAVD83, 2009.55 = 0.40' MLLW = 3.90' MLG
 Distances on the Mississippi River, above and below Head of Passes are shown at 1 mile intervals.
 The location of navigation aids are base on and provided by the U.S. Coast Guard.
 2016 Aerial Photography data source: Precision Aerial Reconnaissance, LLC (1998 DOQQ in green)
 Reference is N.O.A. Navigation Chart No. 11361.
 ** Shoalest Sounding per Quarter per Reach.
 *** High frequency (200 kHz) survey data represents the first signal return at a sounding location and will include suspended solids, known as "fluff", if present. Low frequency (24 kHz) survey data normally penetrates through this "fluff" layer to depict elevations of consolidated bottom material. Low frequency accuracies may vary depending on channel conditions and fathometer settings.



DISCLAIMER: The United States Government furnishes these data and the recipient accepts and uses them with the express understanding that the data are not warranted for accuracy, reliability, usability or suitability for any particular purpose of the recipient. The user is responsible for the results and accuracy of any information derived from the data. The user shall not be held liable for any damage or injury resulting from the use of the data. The user shall not be held liable for any damage or injury resulting from the use of the data. The user shall not be held liable for any damage or injury resulting from the use of the data.

U.S. ARMY CORPS OF ENGINEERS NEW ORLEANS DISTRICT	
Submitted:	Checked By: MSK
Recommended:	Checked By: MSK
Approved:	Checked By: MSK

**MISSISSIPPI RIVER - B.R. TO GULF
 SOUTHWEST PASS - SHEET 10
 SW_10_SWP_20210514_CS
 14 May 2021**

**Sheet Reference Number
 10 of 13**

Revision Number:
 4.1-20191105