

DISTRIBUTION LIABILITY: The data represents the results of data collection/processing for a specific US Army Corps of Engineers project. It is only valid for its intended use, contains, time and accuracy specifications. The user is responsible for the results of any use under no liability whatsoever to any person by reason of any use of the data for other than its intended purpose.

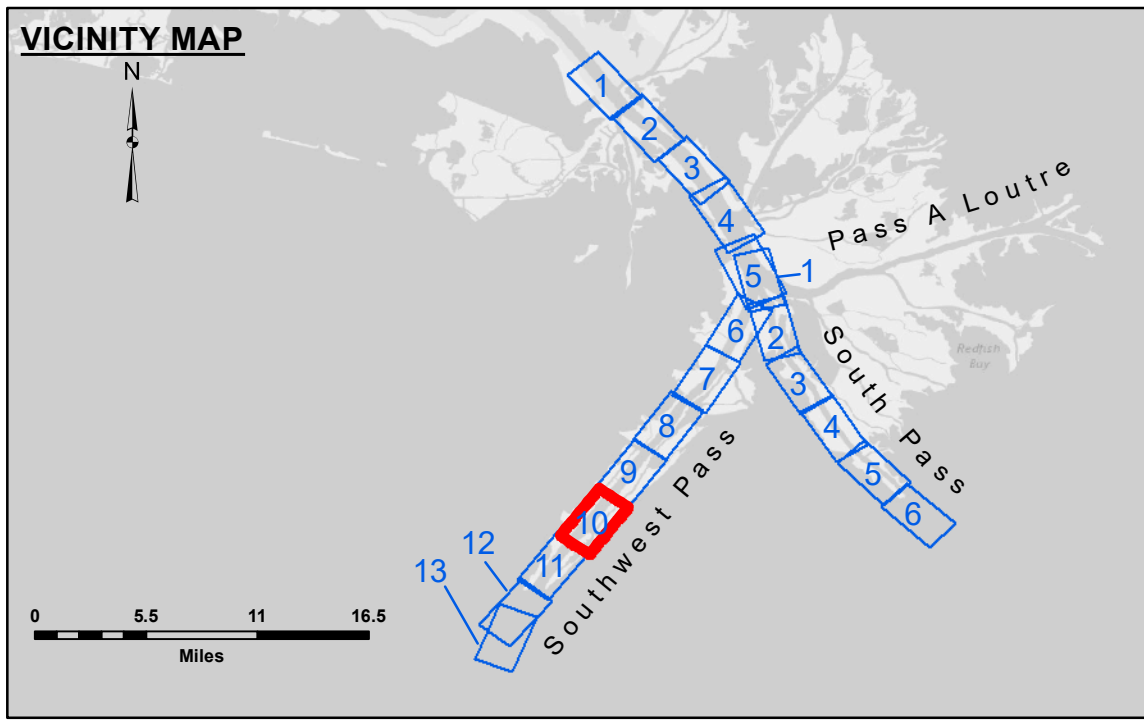
DATA: Constant hydrographic survey data is subject to change and may not represent the most current information. The Corps of Engineers does not accept responsibility for changes in the hydrographic conditions which develop after the date of the survey. The information depicted on this map represents the results of a survey conducted on the date indicated and should not be considered to represent the general condition existing at that time.

DISCLAIMER: The United States Government furnishes these data and the recipient accepts and uses them with the express understanding that the data are not to be used for any purpose not expressed, or implied concerning the accuracy, completeness, reliability, usability or suitability for any particular purpose of the recipient. The recipient shall be held responsible for any use of the data under no liability whatsoever to any person by reason of any use of the data for other than its intended purpose.

U.S. ARMY CORPS OF ENGINEERS NEW ORLEANS DISTRICT	
Submitted:	Surveyed By: JTB & DEB
Recommended:	Plotted By: TSS
Approved:	Checked By: MSK
	Chart, Survey Station
	Chart, Waterways Maintenance Section

**MISSISSIPPI RIVER - B.R. TO GULF
SOUTHWEST PASS - SHEET 10
SW_10_SWP_20220324_CS_PRO
24 March 2022**

**Sheet Reference Number
10 of 13**



LEGEND	
Federal Navigation Channel	Placement Area
Federal Navigation Center Line	Beacon, General
As-built Pipeline/Cable	Red Navigation Buoy
Unconfirmed Pipeline/Cable	Green Navigation Buoy
Project Depth Contour	Borrow Area
Cable Area	Shoalest Sounding**
Anchorage Area	Wrecks-Submerged

NOTES:

Horizontal Coordinate System: North American Datum of 1983 (NAD83), projected to the State Plane Coordinate System (SPCS), Louisiana South Zone. Distance units in U.S. Survey Feet.

Vertical Datum: Soundings are shown in feet and indicate depths below Mean Lower Low Water (MLLW, 12-16). Datum Relationships for gage 01625 as of March 2020: 0.0' NAVD83, 2009.55 = 0.40' MLLW = 3.90' MLG

Distances on the Mississippi River, above and below Head of Passes are shown at 1 mile intervals.

The location of navigation aids are base on and provided by the U.S. Coast Guard.

2016 Aerial Photography data source: Precision Aerial Reconnaissance, LLC (1998 DOQQ in green)

Reference is N.O.A. Navigation Chart No. 11361.

** Shoalest Sounding per Quarter per Reach.

*** High frequency (200 kHz) survey data represents the first signal return at a sounding location and will include suspended solids, known as "fluff", if present. Low frequency (24 kHz) survey data normally penetrates through this "fluff" layer to depict elevations of consolidated bottom material. Low frequency accuracies may vary depending on channel conditions and fathometer settings.

Gage Reading: 1.8 MLLW @ LIGHT 14 @ 0910
Sea Conditions: CALM
Vessel Name: BLANCHARD
Survey Type: CONDITION, SB
Sounding Frequency***: LOW