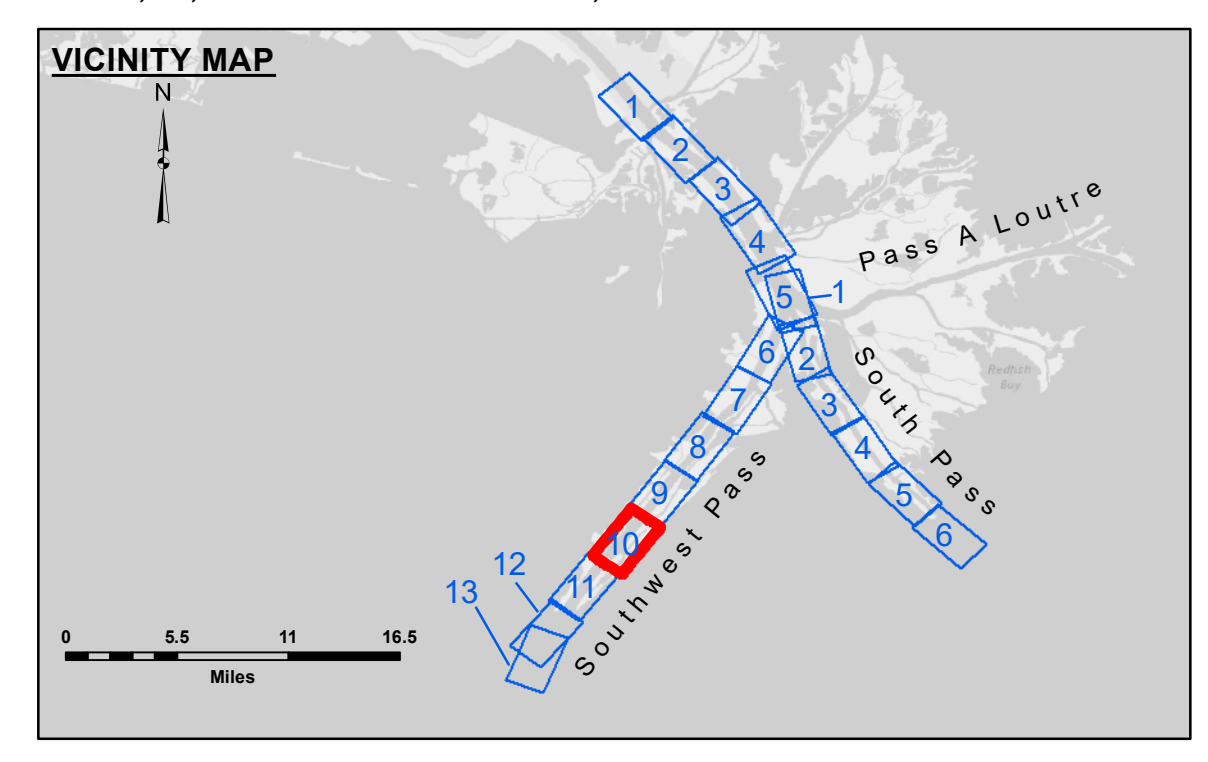


**CUTTERHEAD DREDGE ROBERT M. WHITE  
DREDGING MILE 12.20 BHP TO MILE 13.00 BHP  
EAST HALF OF THE CHANNEL**



**LEGEND**

- Federal Navigation Channel
- Federal Navigation Center Line
- As-built Pipeline/Cable
- ..... Unconfirmed Pipeline/Cable
- Project Depth Contour
- Cable Area
- Placement Area
- Anchorage Area
- ⊗ Obstruction Point
- ★ Beacon, General
- ◆ Red Navigation Buoy
- ◆ Green Navigation Buoy
- Borrow Area
- Shoalest Sounding\*\*
- ★ Beacon, General
- ◆ Red Navigation Buoy
- ◆ Green Navigation Buoy

Gage Reading: 1.4 MLLW @ LIGHT 14 @ 1005  
 Sea Conditions: CALM  
 Vessel Name: JOHN BOPP  
 Survey Type: CONDITION, SB  
 Sounding Frequency\*\*\*: LOW

Feet  
 0 500 1,000 1,500 2,000 2,500

**NOTES:**  
 Horizontal Coordinate System: North American Datum of 1983 (NAD83), projected to the State Plane Coordinate System (SPCS), Louisiana South Zone. Distance units in U.S. Survey Feet.  
 Vertical Datum: Soundings are shown in feet and indicate depths below Mean Lower Low Water (MLLW, 12-16). Datum Relationships for gage 01625 as of March 2020: 0.0' NAVD83, 2009.55 = 0.40' MLLW = 3.90' MLG  
 Distances on the Mississippi River, above and below Head of Passes are shown at 1 mile intervals.  
 The location of navigation aids are base on and provided by the U.S. Coast Guard.  
 2016 Aerial Photography data source: Precision Aerial Reconnaissance, LLC (1998 DOQQ in green)  
 Reference is N.O.A. Navigation Chart No. 11361.  
 \*\* Shoalest Sounding per Quarter per Reach.  
 \*\*\* High frequency (200 kHz) survey data represents the first signal return at a sounding location and will include suspended solids, known as "fluff", if present. Low frequency (24 kHz) survey data normally penetrates through this "fluff" layer to depict elevations of consolidated bottom material. Low frequency accuracies may vary depending on channel conditions and fathometer settings.



**DISTRIBUTION LIABILITY:** The data represents the results of data collection/processing for a specific US Army Corps of Engineers project. It is only valid for its intended use, content, time and accuracy specifications. The user is responsible for the results and accuracy of the data for other than its intended purpose.  
 Data Constants: Hydrographic survey data is subject to change and may not be used for navigation purposes. The user is responsible for the accuracy of the data for other than its intended purpose.  
 The information depicted on this map represents the results of a hydrographic survey conducted on the date of the survey. It is not intended to represent the general condition existing at that time.

Submitted:	Surveyed By: JH & RCC
Recommended:	Plotted By: TSS
Approved:	Checked By: MSK

U.S. ARMY CORPS OF ENGINEERS  
NEW ORLEANS DISTRICT

**MISSISSIPPI RIVER - B.R. TO GULF  
SOUTHWEST PASS - SHEET 10  
SW\_10\_SWP\_20220414\_CS  
14 April 2022**

**Sheet Reference Number  
10 of 13**

Revision Number: 4.2-20200420