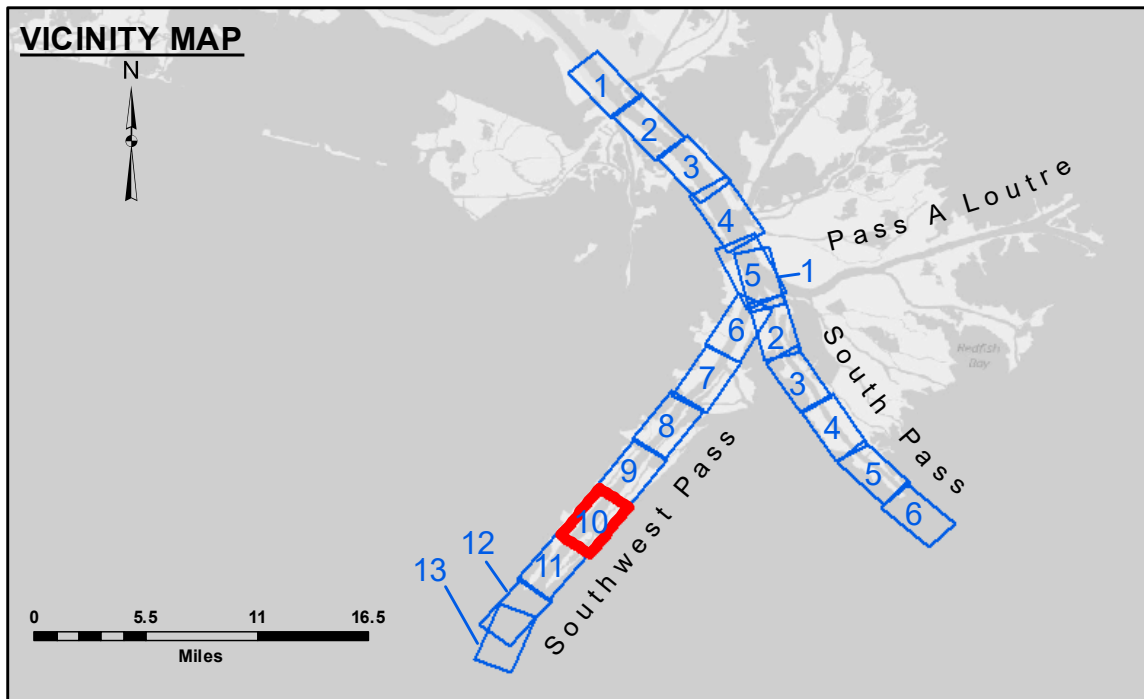


CUTTERHEAD DREDGE ROBERT M. WHITE
DREDGING MILE 12.20 BHP TO MILE 13.00 BHP
EAST HALF OF THE CHANNEL



LEGEND

--- Federal Navigation Channel	● Cable Area	□ Borrow Area	■ -10' and above
— Federal Navigation Center Line	□ Placement Area	● Shoalest Sounding**	■ -10' to -20'
— As-built Pipeline/Cable	□ Anchorage Area	★ Beacon, General	■ -20' to -30'
..... Unconfirmed Pipeline/Cable	⊗ Obstruction Point	◆ Red Navigation Buoy	■ -30' to -40'
— Project Depth Contour	⚓ Wrecks-Submerged	◆ Green Navigation Buoy	■ -40' to -45'
			■ -45' to -50'
			■ -50' to -55'
			■ -55' and below

Gage Reading: 2.0 MLLW @ LIGHT 14 @ 0940
 Sea Conditions: CALM, FLUFF
 Vessel Name: BLANCHARD
 Survey Type: CONDITION, SB
 Sounding Frequency***: LOW

Feet
 0 500 1,000 1,500 2,000 2,500

NOTES:
 Horizontal Coordinate System: North American Datum of 1983 (NAD83), projected to the State Plane Coordinate System (SPCS), Louisiana South Zone. Distance units in U.S. Survey Feet.
 Vertical Datum: Soundings are shown in feet and indicate depths below Mean Lower Low Water (MLLW, 12-16). Datum Relationships for gage 01625 as of March 2020: 0.0' NAVD83, 2009.55 = 0.40' MLLW = 3.90' MLG
 Distances on the Mississippi River, above and below Head of Passes are shown at 1 mile intervals.
 The location of navigation aids are base on and provided by the U.S. Coast Guard.
 2016 Aerial Photography data source: Precision Aerial Reconnaissance, LLC (1998 DOQQ in green)
 Reference is N.O.A. Navigation Chart No. 11361.
 ** Shoalest Sounding per Quarter per Reach.
 *** High frequency (200 kHz) survey data represents the first signal return at a sounding location and will include suspended solids, known as "fluff", if present. Low frequency (24 kHz) survey data normally penetrates through this "fluff" layer to depict elevations of consolidated bottom material. Low frequency accuracies may vary depending on channel conditions and fathometer settings.



DISCLAIMER: The United States Government furnishes these data and the recipient accepts and uses them with the express understanding that the data are not warranted for accuracy, reliability, usability or suitability for any particular purpose of the recipient. The user is responsible for the results obtained from the use of the data for other than intended purposes.
 Distribution Liability: The data represents the results of data collection/processing for a specific US Army Corps of Engineers project. It is only valid for its intended use, content, time and accuracy specifications. The user is responsible for the results obtained from the use of the data for other than intended purposes.
 Data Constants: Hydrographic survey data is subject to change rapidly due to several factors including but not limited to dredging, spoil accumulation, and channel migration. The user is responsible for the hydrographical conditions which develop after the date of the survey. The Corps of Engineers does not accept any responsibility for changes in the hydrographical conditions which develop after the date of the survey. The information depicted on the map represents the results of a survey conducted on the date shown. It is not to be considered to represent the general condition existing at that time.

U.S. ARMY CORPS OF ENGINEERS
NEW ORLEANS DISTRICT

Submitted:	Surveyed By: JTB & DBD
Recommended:	Plotted By: TSS
Approved:	Checked By: MSK

MISSISSIPPI RIVER - B.R. TO GULF
 SOUTHWEST PASS - SHEET 10
 SW_10_SWP_20220418_CS
 18 April 2022

Sheet Reference Number
 10 of 13

Revision Number:
 4.2-20220418.20