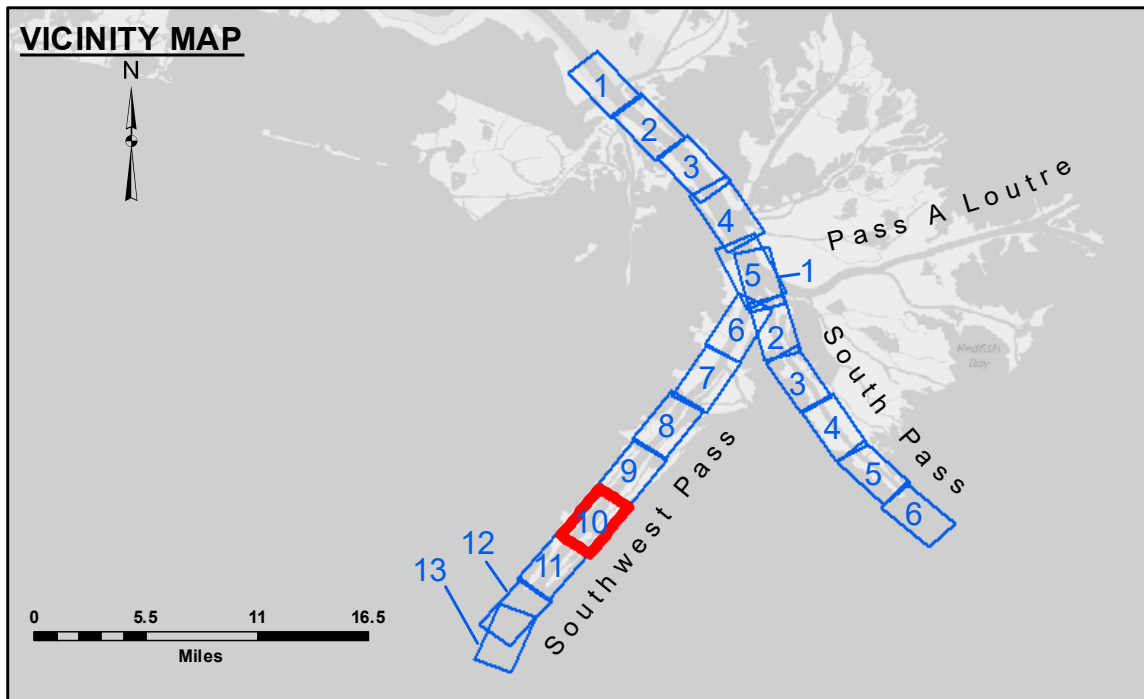


CUTTERHEAD DREDGE ROBERT M. WHITE
DREDGING MILE 13.00 BHP TO MILE 16.00 BHP
EAST HALF OF THE CHANNEL



LEGEND			
--- Federal Navigation Channel	● Cable Area	□ Borrow Area	■ -10' and above
— Federal Navigation Center Line	□ Placement Area	● Shoalest Sounding**	■ -10' to -20'
— As-built Pipeline/Cable	□ Anchorage Area	★ Beacon, General	■ -20' to -30'
..... Unconfirmed Pipeline/Cable	⊗ Obstruction Point	◆ Red Navigation Buoy	■ -30' to -40'
— Project Depth Contour	⚓ Wrecks-Submerged	◆ Green Navigation Buoy	■ -40' to -45'
			■ -45' to -50'
			■ -50' to -55'
			■ -55' and below

Gage Reading: 1.6 MLLW @ LIGHT 14 @ 1035
 Sea Conditions: CALM, FLUFF
 Vessel Name: BLANCHARD
 Survey Type: CONDITION, SB
 Sounding Frequency***: LOW

Feet
 0 500 1,000 1,500 2,000 2,500

NOTES:
 Horizontal Coordinate System: North American Datum of 1983 (NAD83), projected to the State Plane Coordinate System (SPCS), Louisiana South Zone. Distance units in U.S. Survey Feet.
 Vertical Datum: Soundings are shown in feet and indicate depths below Mean Lower Low Water (MLLW, 12-16). Datum Relationships for gage 01625 as of March 2020: 0.0' NAVD83, 2009.55 = 0.40' MLLW = 3.90' MLG
 Distances on the Mississippi River, above and below Head of Passes are shown at 1 mile intervals.
 The location of navigation aids are base on and provided by the U.S. Coast Guard.
 2016 Aerial Photography data source: Precision Aerial Reconnaissance, LLC (1998 DOQQ in green)
 Reference is N.O.A. Navigation Chart No. 11361.
 ** Shoalest Sounding per Quarter per Reach.
 *** High frequency (200 kHz) survey data represents the first signal return at a sounding location and will include suspended solids, known as "fluff", if present. Low frequency (24 kHz) survey data normally penetrates through this "fluff" layer to depict elevations of consolidated bottom material. Low frequency accuracies may vary depending on channel conditions and fathometer settings.



DISCLAIMER: The United States Government furnishes these data and the recipient accepts and uses them with the express understanding that the data are not warranted for accuracy, reliability, usability, or suitability for any particular purpose of the recipient. The user is responsible for the results of any use of the data. The recipient may not transfer these data to others without also transferring the disclaimer. The information depicted on the map represents the results of a survey conducted on or about the date of the survey. The Corps of Engineers does not warrant the accuracy of the information. The Corps of Engineers is not responsible for changes in the hydrographical conditions which develop after the date of the survey. The Corps of Engineers is not responsible for changes in the hydrographical conditions which develop after the date of the survey. The Corps of Engineers is not responsible for changes in the hydrographical conditions which develop after the date of the survey. The Corps of Engineers is not responsible for changes in the hydrographical conditions which develop after the date of the survey.

U.S. ARMY CORPS OF ENGINEERS NEW ORLEANS DISTRICT		
Submitted:	Surveyed By: JTB & DBD	Checked By: MSK
Recommended:	Plotted By: TSS	
Approved:	Chart Survey Section	Chart Waterways Maintenance Section

**MISSISSIPPI RIVER - B.R. TO GULF
 SOUTHWEST PASS - SHEET 10
 SW_10_SWP_20220427_CS
 27 April 2022**

**Sheet Reference Number
 10 of 13**

Revision Number:
 4.2-20220427