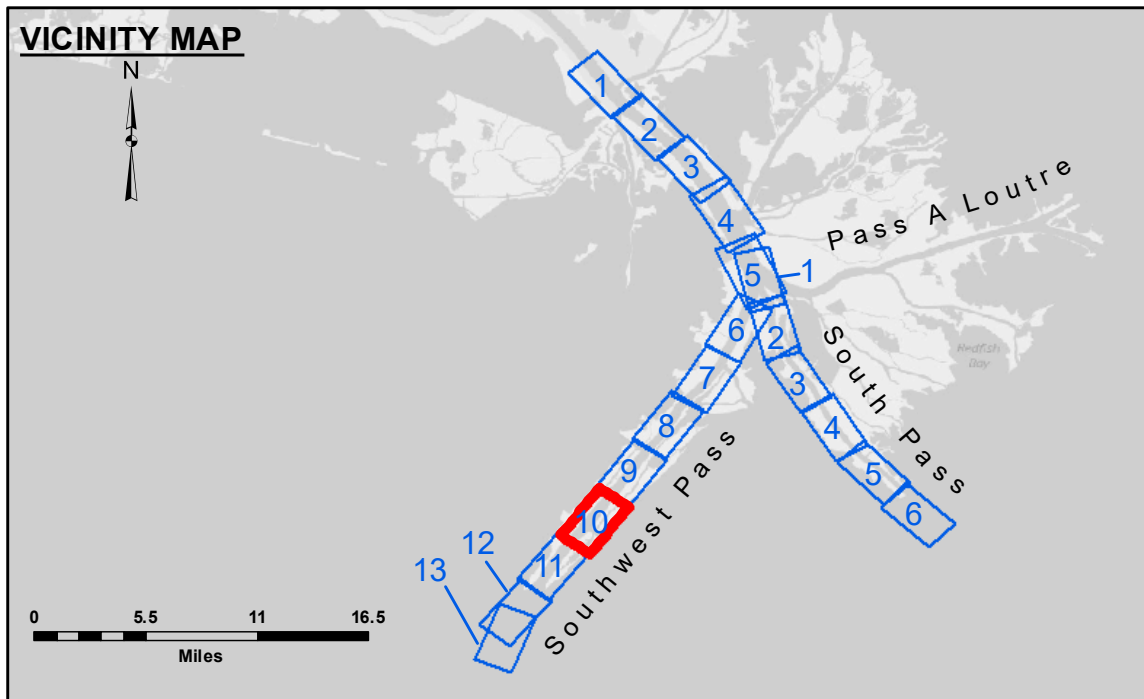
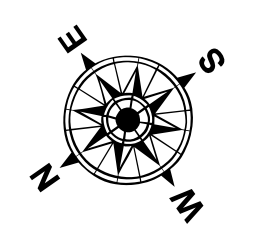


**CUTTERHEAD DREDGE ROBERT M. WHITE
DREDGING MILE 12 BHP TO MILE 14 BHP
WEST HALF OF THE CHANNEL**



LEGEND			
--- Federal Navigation Channel	○ Cable Area	□ Borrow Area	■ -10' and above
— Federal Navigation Center Line	□ Placement Area	● Shoalest Sounding**	■ -10' to -20'
— As-built Pipeline/Cable	□ Anchorage Area	★ Beacon, General	■ -20' to -30'
..... Unconfirmed Pipeline/Cable	⊗ Obstruction Point	◆ Red Navigation Buoy	■ -30' to -40'
— Project Depth Contour	⚓ Wrecks-Submerged	◆ Green Navigation Buoy	■ -40' to -45'
			■ -45' to -50'
			■ -50' to -55'
			■ -55' and below



Gage Reading: 1.7 MLLW @ LIGHT 14 @ 0945
 Sea Conditions: CALM, FLUFF
 Vessel Name: TOBIN
 Survey Type: CONDITION, SB
 Sounding Frequency***: LOW



NOTES:
 Horizontal Coordinate System: North American Datum of 1983 (NAD83), projected to the State Plane Coordinate System (SPCS), Louisiana South Zone. Distance units in U.S. Survey Feet.
 Vertical Datum: Soundings are shown in feet and indicate depths below Mean Lower Low Water (MLLW, 12-16). Datum Relationships for gage 01625 as of March 2020: 0.0' NAVD83, 2009.55 = 0.40' MLLW = 3.90' MLG
 Distances on the Mississippi River, above and below Head of Passes are shown at 1 mile intervals.
 The location of navigation aids are base on and provided by the U.S. Coast Guard.
 2016 Aerial Photography data source: Precision Aerial Reconnaissance, LLC (1998 DOQQ in green)
 Reference is N.O.A. Navigation Chart No. 11361.
 ** Shoalest Sounding per Quarter per Reach.
 *** High frequency (200 kHz) survey data represents the first signal return at a sounding location and will include suspended solids, known as "fluff", if present. Low frequency (24 kHz) survey data normally penetrates through this "fluff" layer to depict elevations of consolidated bottom material. Low frequency accuracies may vary depending on channel conditions and fathometer settings.



**US Army Corps of Engineers
District: CEMVN**

DISCLAIMER: The United States Government furnishes these data and the recipient accepts and uses them with the express understanding that the data are not warranted for any purpose other than that for which they were prepared, or implied concerning the accuracy, completeness, reliability, usability or suitability for any particular purpose of the recipient. The user is responsible for the results obtained from the use of the data for other than the intended purpose. The information depicted on the map represents the results of a survey conducted by the United States Army Corps of Engineers and is not to be used for any purpose other than that for which it was prepared. The recipient may not transfer these data to others without also transferring the disclaimer. The information depicted on the map represents the results of a survey conducted by the United States Army Corps of Engineers and is not to be used for any purpose other than that for which it was prepared. The recipient may not transfer these data to others without also transferring the disclaimer.

U.S. ARMY CORPS OF ENGINEERS NEW ORLEANS DISTRICT		
Submitted:	Reviewed By: JH & RCC	Checked By: MSK
Recommended:	Plotted By: RSL	Approved:
Approved:	Chart Survey Section	Chart Waterways Maintenance Section

**MISSISSIPPI RIVER - B.R. TO GULF
SOUTHWEST PASS - SHEET 10
SW_10_SWP_20220906_CS_FORUM
06 September 2022**

**Sheet Reference Number
10 of 13**

Revision Number:
4.2-20220906.20