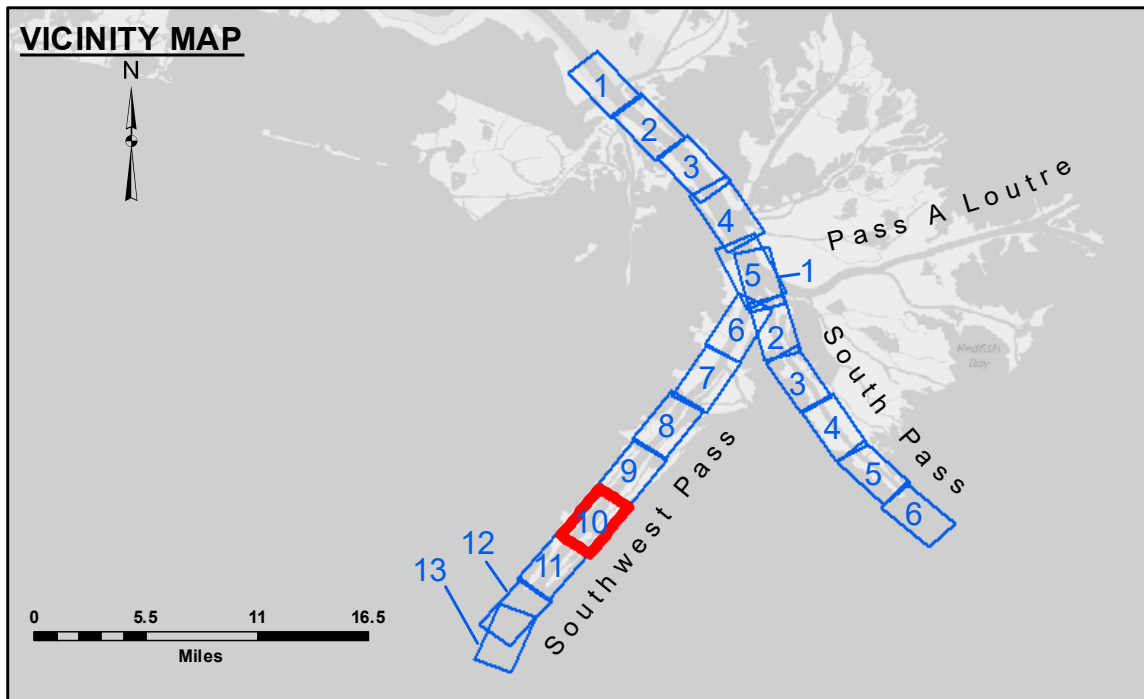
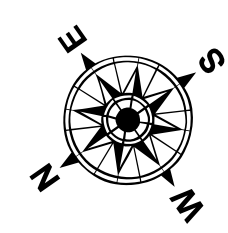


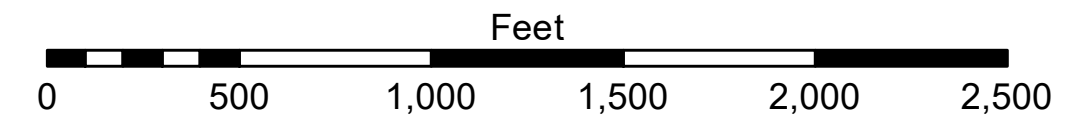
**CUTTERHEAD DREDGE ALASKA
DREDGING MILE 12.0 BHP TO MILE 15.0 BHP
WEST TOE & 275' EAST OF THE WEST TOE**



LEGEND			
--- Federal Navigation Channel	● Cable Area	□ Borrow Area	■ -10' and above
— Federal Navigation Center Line	■ Placement Area	● Shoalest Sounding**	■ -10' to -20'
— As-built Pipeline/Cable	□ Anchorage Area	★ Beacon, General	■ -20' to -30'
..... Unconfirmed Pipeline/Cable	⊗ Obstruction Point	◆ Red Navigation Buoy	■ -30' to -40'
— Project Depth Contour	⚓ Wrecks-Submerged	◆ Green Navigation Buoy	■ -40' to -45'
			■ -45' to -50'
			■ -50' to -55'
			■ -55' and below



Gage Reading: 0.6 MLLW @ LIGHT 14 @ 0910
 Sea Conditions: CALM
 Vessel Name: BEAUVAIS
 Survey Type: CONDITION, SB
 Sounding Frequency***: LOW



NOTES:
 Horizontal Coordinate System: North American Datum of 1983 (NAD83), projected to the State Plane Coordinate System (SPCS), Louisiana South Zone. Distance units in U.S. Survey Feet.
 Vertical Datum: Soundings are shown in feet and indicate depths below Mean Lower Low Water (MLLW, 12-16). Datum Relationships for gage 01625 as of March 2020: 0.0' NAVD83, 2009.55 = 0.40' MLLW = 3.90' MLG
 Distances on the Mississippi River, above and below Head of Passes are shown at 1 mile intervals.
 The location of navigation aids are base on and provided by the U.S. Coast Guard.
 2022 Aerial Photography data source: Optimal GEO (1998 DOQQ in green)
 Reference is N.O.A. Navigation Chart No. 11361.
 ** Shoalest Sounding per Quarter per Reach.
 *** High frequency (200 kHz) survey data represents the first signal return at a sounding location and will include suspended solids, known as "fluff", if present. Low frequency (24 kHz) survey data normally penetrates through this "fluff" layer to depict elevations of consolidated bottom material. Low frequency accuracies may vary depending on channel conditions and fathometer settings.



DISCLAIMER: The United States Government furnishes these data and the recipient accepts and uses them with the express understanding that the Government makes no warranty, expressed, implied, or otherwise, concerning the accuracy, completeness, reliability, usability, or suitability for any particular purpose of the information. The user is responsible for the results obtained from the use of this information. The user shall indemnify and hold the United States Government harmless from any and all claims, damages, and expenses, including reasonable attorneys' fees, that may be incurred by the United States Government as a result of the use of this information. The information depicted on this map represents the results of a survey conducted on or after the date of the information depicted on this map. The information is not to be used for any purpose other than that for which it was collected. The information is not to be used for any purpose other than that for which it was collected. The information is not to be used for any purpose other than that for which it was collected.

U.S. ARMY CORPS OF ENGINEERS NEW ORLEANS DISTRICT		
Submitted:	Surveyed By: JUC & MGF	Checked By: MSK
Recommended:	Plotted By: TSS	
Approved:	Chart Survey Section	Chart Waterways Maintenance Section

**MISSISSIPPI RIVER - B.R. TO GULF
 SOUTHWEST PASS - SHEET 10
 SW_10_SWP_20230921_CS
 21 September 2023**

**Sheet Reference Number
 10 of 13**

Revision Number:
 4.2-20230921