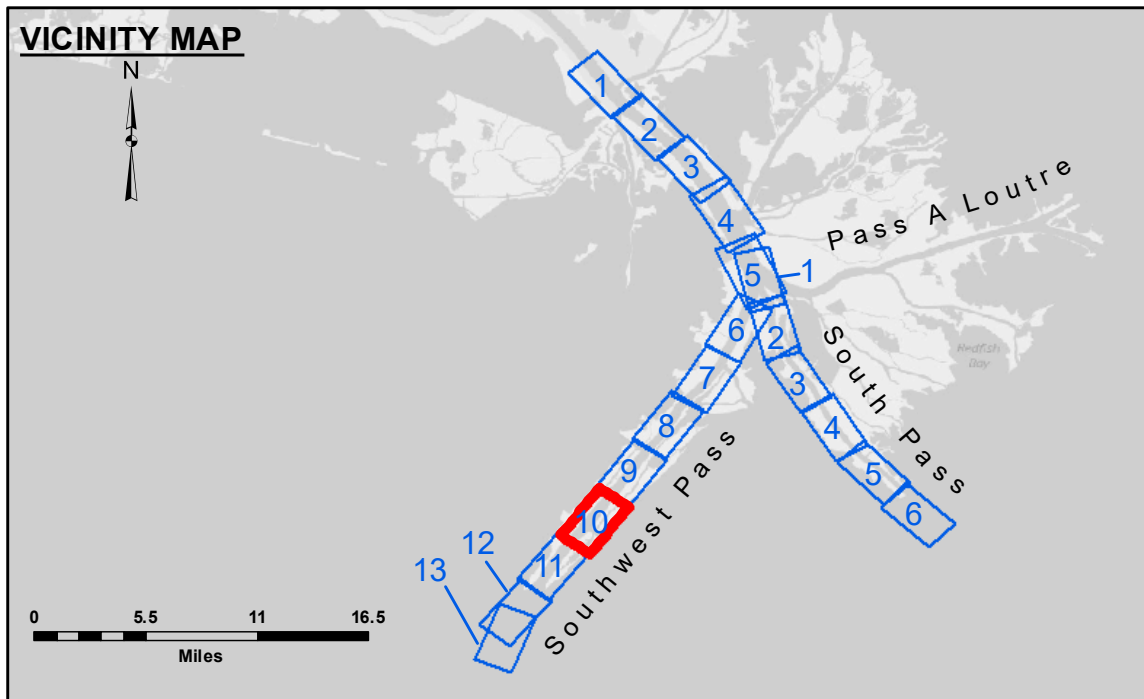
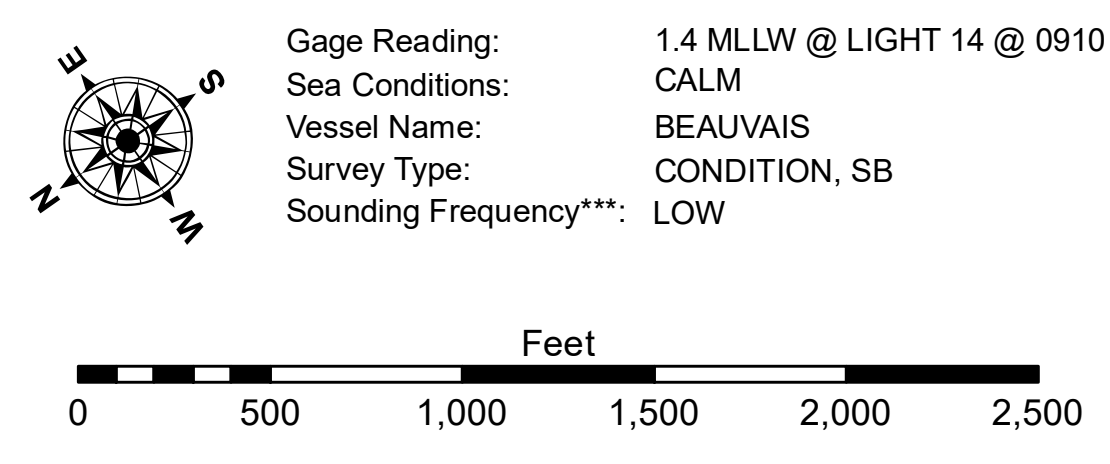


**CUTTERHEAD DREDGE ALASKA
DREDGING MILE 12.0 BHP TO MILE 15.0 BHP
WEST TOE & 275' EAST OF THE WEST TOE**



LEGEND

--- Federal Navigation Channel	● Cable Area	□ Borrow Area	■ -10' and above
— Federal Navigation Center Line	□ Placement Area	● Shoalest Sounding**	■ -10' to -20'
— As-built Pipeline/Cable	□ Anchorage Area	★ Beacon, General	■ -20' to -30'
..... Unconfirmed Pipeline/Cable	⊗ Obstruction Point	◆ Red Navigation Buoy	■ -30' to -40'
— Project Depth Contour	⚓ Wrecks-Submerged	◆ Green Navigation Buoy	■ -40' to -45'
			■ -45' to -50'
			■ -50' to -55'
			■ -55' and below



NOTES:
Horizontal Coordinate System: North American Datum of 1983 (NAD83), projected to the State Plane Coordinate System (SPCS), Louisiana South Zone. Distance units in U.S. Survey Feet.
Vertical Datum: Soundings are shown in feet and indicate depths below Mean Lower Low Water (MLLW, 12-16). Datum Relationships for gage 01625 as of March 2020: 0.0' NAVD83, 2009.55 = 0.40' MLLW = 3.90' MLG
Distances on the Mississippi River, above and below Head of Passes are shown at 1 mile intervals.
The location of navigation aids are base on and provided by the U.S. Coast Guard.
2022 Aerial Photography data source: Optimal GEO (1998 DOQQ in green)
Reference is N.O.A. Navigation Chart No. 11361.
** Shoalest Sounding per Quarter per Reach.
*** High frequency (200 kHz) survey data represents the first signal return at a sounding location and will include suspended solids, known as "fluff", if present. Low frequency (24 kHz) survey data normally penetrates through this "fluff" layer to depict elevations of consolidated bottom material. Low frequency accuracies may vary depending on channel conditions and fathometer settings.



DISCLAIMER: The United States Government furnishes these data and the recipient accepts and uses them with the express understanding that the Government makes no warranty, expressed or implied, as to the accuracy, completeness, reliability, usability or suitability for any particular purpose of the information. The user is responsible for the results obtained from the use of this information. The user shall indemnify and hold the United States Government harmless from all claims, damages, losses and expenses, including reasonable attorneys' fees, that may be incurred by the United States Government as a result of the use of this information. The information depicted on this map represents the results of a survey conducted on or after the date of the information depicted on this map. The user is responsible for the accuracy of the information depicted on this map. The user shall indemnify and hold the United States Government harmless from all claims, damages, losses and expenses, including reasonable attorneys' fees, that may be incurred by the United States Government as a result of the use of this information.

**U.S. ARMY CORPS OF ENGINEERS
NEW ORLEANS DISTRICT**

Submitted:	Surveyed By: JUC & MGF
Recommended:	Plotted By: TSS
Approved:	Checked By: MSK

**MISSISSIPPI RIVER - B.R. TO GULF
SOUTHWEST PASS - SHEET 10
SW_10_SWP_20230926_CS
26 September 2023**

**Sheet Reference Number
10 of 13**

Revision Number:
4.2-20230926.20