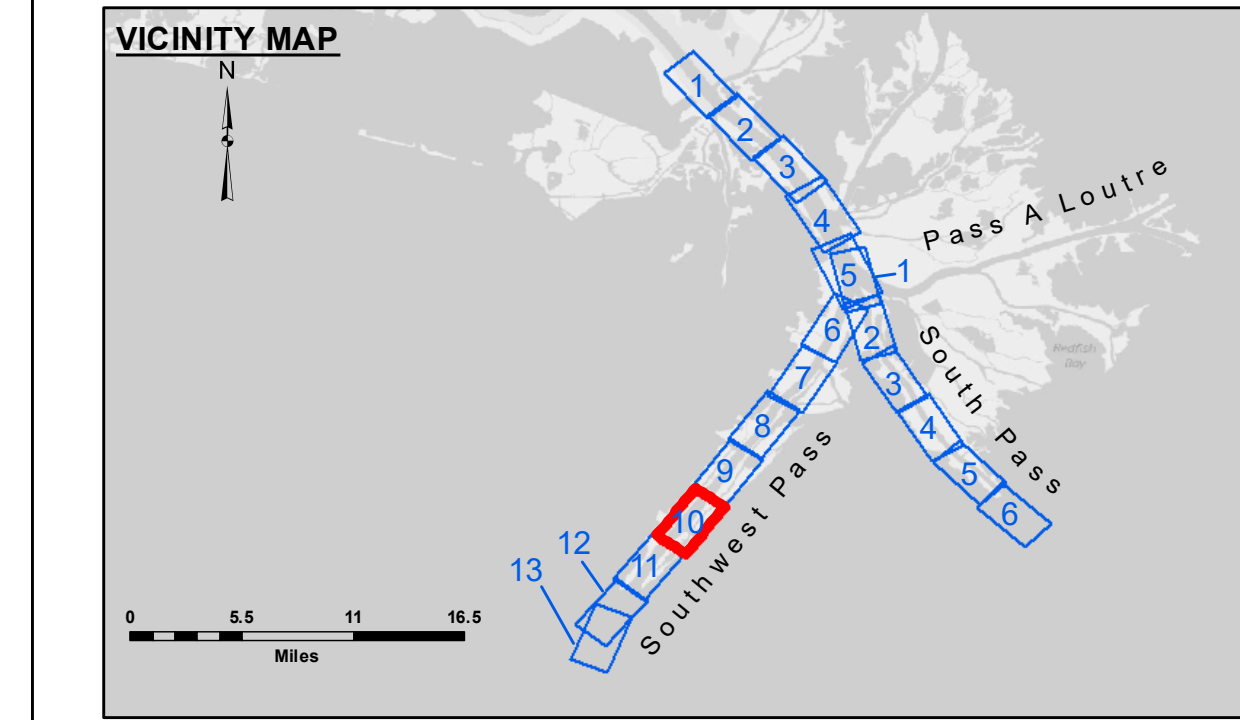
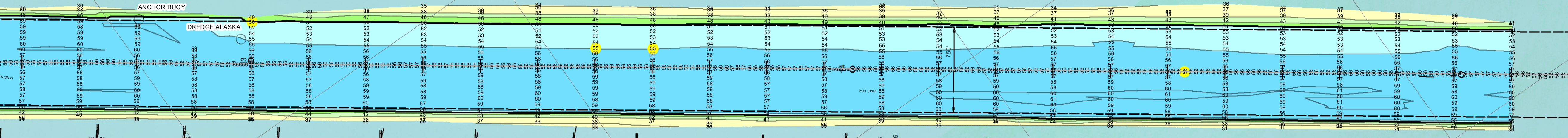


CUTTERHEAD DREDGE ALASKA
 DREDGING MILE 12.0 BHP TO MILE 15.0 BHP
 EAST TOE & 275' WEST OF THE EAST TOE



LEGEND			
--- Federal Navigation Channel	● Cable Area	□ Borrow Area	■ -10' and above
— Federal Navigation Center Line	□ Placement Area	● Shoalest Sounding**	■ -10' to -20'
— As-built Pipeline/Cable	□ Anchorage Area	★ Beacon, General	■ -20' to -30'
..... Unconfirmed Pipeline/Cable	⊗ Obstruction Point	◆ Red Navigation Buoy	■ -30' to -40'
— Project Depth Contour	⚓ Wrecks-Submerged	◆ Green Navigation Buoy	■ -40' to -45'
			■ -45' to -50'
			■ -50' to -55'
			■ -55' and below

Gage Reading: 0.4 MLLW @ LIGHT 14 @ 1000
 Sea Conditions: CALM
 Vessel Name: TOBIN
 Survey Type: CONDITION, SB
 Sounding Frequency***: LOW

Feet
 0 500 1,000 1,500 2,000 2,500

NOTES:
 Horizontal Coordinate System: North American Datum of 1983 (NAD83), projected to the State Plane Coordinate System (SPCS), Louisiana South Zone. Distance units in U.S. Survey Feet.
 Vertical Datum: Soundings are shown in feet and indicate depths below Mean Lower Low Water (MLLW, 12-16). Datum Relationships for gage 01625 as of March 2020: 0.0' NAVD83, 2009.55 = 0.40' MLLW = 3.90' MLG
 Distances on the Mississippi River, above and below Head of Passes are shown at 1 mile intervals.
 The location of navigation aids are base on and provided by the U.S. Coast Guard.
 2022 Aerial Photography data source: Optimal GEO (1998 DOQQ in green)
 Reference is N.O.A. Navigation Chart No. 11361.
 ** Shoalest Sounding per Quarter per Reach.
 *** High frequency (200 kHz) survey data represents the first signal return at a sounding location and will include suspended solids, known as "fluff", if present. Low frequency (24 kHz) survey data normally penetrates through this "fluff" layer to depict elevations of consolidated bottom material. Low frequency accuracies may vary depending on channel conditions and fathometer settings.



DISCLAIMER: The United States Government furnishes these data and the recipient accepts and uses them with the express understanding that the Government makes no warranty, expressed or implied, concerning the accuracy, completeness, reliability, usability or suitability for any particular purpose of the information. The user is responsible for the results obtained from the use of this information. The user shall indemnify and hold the United States Government harmless from any liability, whether to any person by reason of any use of this information. These data are being made available to the recipient under no liability whatsoever to any person by reason of any use of these data. The recipient may not transfer, disseminate, or use these data to others without obtaining the permission of the United States Government. The information depicted on the map represents the results of a survey conducted on or about the date of the survey. The information is considered to represent the general condition existing at that time.

U.S. ARMY CORPS OF ENGINEERS NEW ORLEANS DISTRICT		
Submitted:	Surveyed By: JH & RCC	Checked By: MSK
Recommended:	Plotted By: TSS	
Approved:	Chart Survey Section	Chart Waterways Maintenance Section

MISSISSIPPI RIVER - B.R. TO GULF
SOUTHWEST PASS - SHEET 10
SW_10_SWP_20231114_CS
 14 November 2023

Sheet Reference Number
 10 of 13

Revision Number:
 4.2-20230429