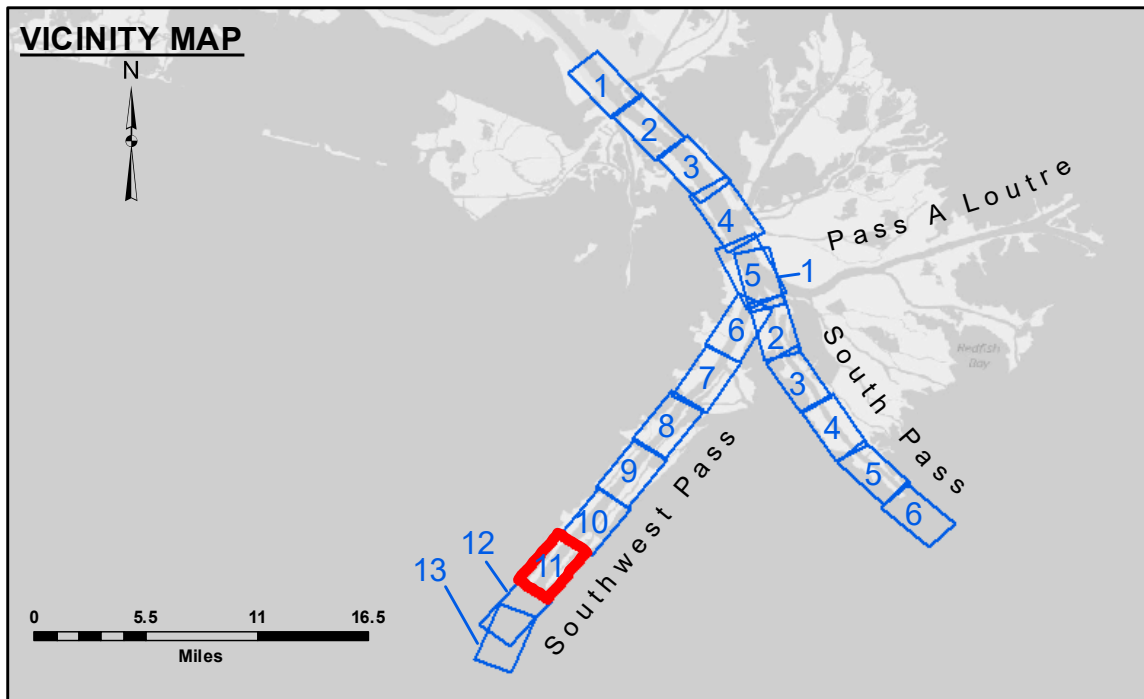
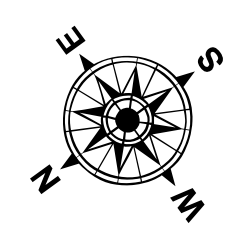


**CUTTERHEAD DREDGE ROBERT M. WHITE
DREDGING MILE 14.00 BHP TO MILE 16.00 BHP
WEST HALF OF THE CHANNEL**



LEGEND

--- Federal Navigation Channel	● Cable Area	□ Borrow Area	■ -10' and above
— Federal Navigation Center Line	□ Placement Area	● Shoalest Sounding**	■ -10' to -20'
— As-built Pipeline/Cable	□ Anchorage Area	★ Beacon, General	■ -20' to -30'
..... Unconfirmed Pipeline/Cable	⊗ Obstruction Point	◆ Red Navigation Buoy	■ -30' to -40'
— Project Depth Contour	⚓ Wrecks-Submerged	◆ Green Navigation Buoy	■ -40' to -45'
			■ -45' to -50'
			■ -50' to -55'
			■ -55' and below



Gage Reading: 1.1 MLLW @ MILE 17.9 @ 1120
 Sea Conditions: CHOPPY
 Vessel Name: TOBIN
 Survey Type: CONDITION, SB
 Sounding Frequency***: LOW



NOTES:
 Horizontal Coordinate System: North American Datum of 1983 (NAD83), projected to the State Plane Coordinate System (SPCS), Louisiana South Zone. Distance units in U.S. Survey Feet.
 Vertical Datum: Soundings are shown in feet and indicate depths below Mean Lower Low Water (MLLW, 12-16). Datum Relationships for gage 01670 as of March 2020: 0.0' NAVD88, 2009.55 = 0.79' MLLW = 4.29' MLG
 Distances on the Mississippi River, above and below Head of Passes are shown at 1 mile intervals.
 The location of navigation aids are base on and provided by the U.S. Coast Guard.
 2016 Aerial Photography data source: Precision Aerial Reconnaissance, LLC (1998 DOQQ in green)
 Reference is N.O.A. Navigation Chart No. 11361.
 ** Shoalest Sounding per Quarter per Reach.
 *** High frequency (200 kHz) survey data represents the first signal return at a sounding location and will include suspended solids, known as "fluff", if present. Low frequency (24 kHz) survey data normally penetrates through this "fluff" layer to depict elevations of consolidated bottom material. Low frequency accuracies may vary depending on channel conditions and fathometer settings.



DISCLAIMER: The United States Government furnishes these data and the recipient accepts and uses them with the express understanding that the United States Government makes no warranty, express or implied, concerning the accuracy, completeness, reliability, usability or suitability for any particular purpose of the information furnished. The user is responsible for the results obtained from the use of this information. The user shall indemnify and hold the United States Government harmless from and against all claims, damages, losses and expenses, including reasonable attorneys' fees, that may be incurred by the United States Government as a result of the use of this information. The information depicted on the map represents the results of a survey conducted on the date shown. The user is responsible for the accuracy of the information. The user shall indemnify and hold the United States Government harmless from and against all claims, damages, losses and expenses, including reasonable attorneys' fees, that may be incurred by the United States Government as a result of the use of this information.

**U.S. ARMY CORPS OF ENGINEERS
NEW ORLEANS DISTRICT**

Submitted:	Checked By:
Recommended:	MSK
Approved:	

**MISSISSIPPI RIVER - B.R. TO GULF
SOUTHWEST PASS - SHEET 11
SW_11_SWP_20220929_CS
29 September 2022**

**Sheet Reference Number
11 of 13**

Revision Number:
4.2-202/04/20