

US Army Corps of Engineers District: CEMVN

Distribution Liability: The data represents the results of data collection/processing for a specific US Army Corps of Engineers project and is not to be used for any other purpose. The user is responsible for the accuracy, content, time and accuracy of the data. The user is responsible for the results of the data. The user is responsible for the results of the data.

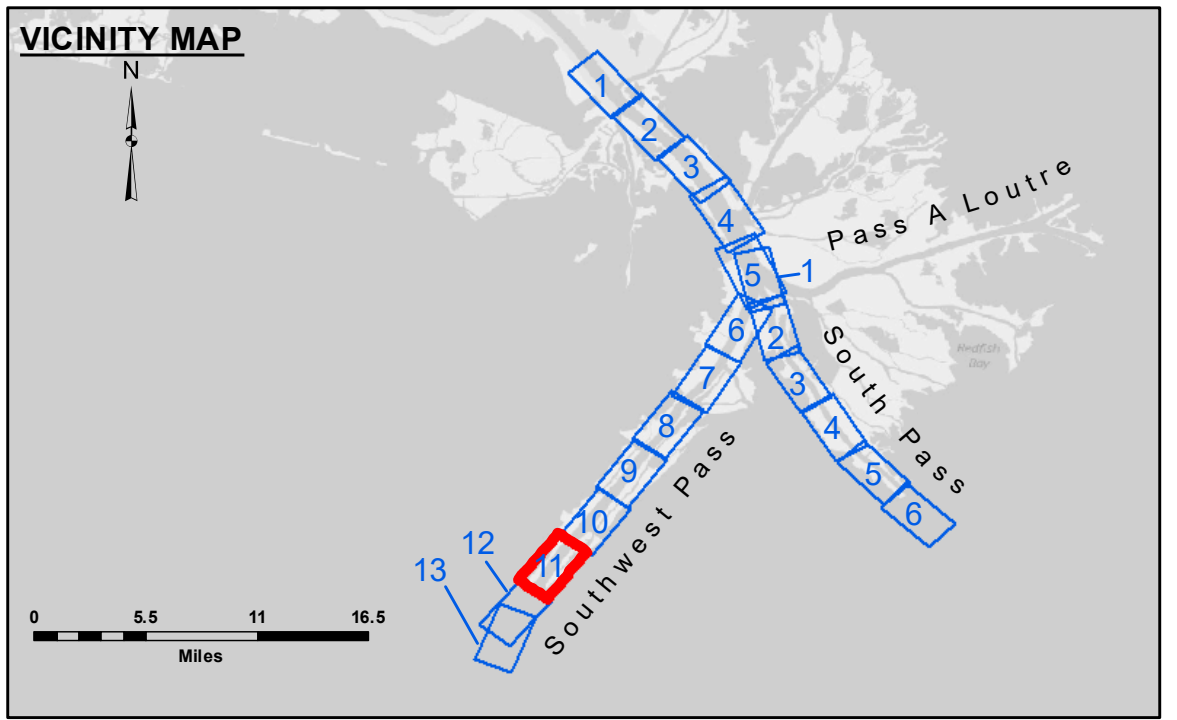
Access Constraints: This United States Government work is in the public domain in the United States of America and is not subject to copyright. It is, however, subject to the provisions of the Copyright Act of 1976, and the user is responsible for the results of the data.

Data Constraints: Hydrographic survey data is subject to change due to several factors including but not limited to dredging, accretion, and other channel conditions. The user is responsible for the results of the data. The user is responsible for the results of the data.

Disclaimer: The information depicted on this map represents the results of a survey conducted by the Corps of Engineers and is not to be used for navigation. The user is responsible for the results of the data.

U.S. ARMY CORPS OF ENGINEERS NEW ORLEANS DISTRICT		
Submitted:	Surveyed By: LB & RCC	Plotted By: TSS
Recommended:	Chart Survey Section	Checked By: MSK
Approved:	Chart, Waterways Maintenance Section	

MISSISSIPPI RIVER - B.R. TO GULF
SOUTHWEST PASS - SHEET 11
SW_11_SWP_20221027_CS
27 October 2022



--- Federal Navigation Channel	● Cable Area	□ Borrow Area	■ -10' and above
— Federal Navigation Center Line	■ Placement Area	● Shoalest Sounding**	■ -10' to -20'
— As-built Pipeline/Cable	⊗ Anchorage Area	★ Beacon, General	■ -20' to -30'
..... Unconfirmed Pipeline/Cable	⊗ Obstruction Point	◆ Red Navigation Buoy	■ -30' to -40'
— Project Depth Contour	★ Wrecks-Submerged	◆ Green Navigation Buoy	■ -40' to -45'
			■ -45' to -50'
			■ -50' to -55'
			■ -55' and below

Gage Reading: 0.9 MLLW @ MILE 17.9 @ 1045
 Sea Conditions: CALM
 Vessel Name: TOBIN
 Survey Type: CONDITION, SB
 Sounding Frequency***: LOW

Vertical Datum: 0.0' NAVD83, 2009.55 = 0.79' MLLW = 4.29' MLG

Distances on the Mississippi River, above and below Head of Passes are shown at 1 mile intervals.

The location of navigation aids are base on and provided by the U.S. Coast Guard.

2016 Aerial Photography data source: Precision Aerial Reconnaissance, LLC (1998 DOQQ in green)

Reference is N.O.A. Navigation Chart No. 11361.

** Shoalest Sounding per Quarter per Reach.

*** High frequency (200 kHz) survey data represents the first signal return at a sounding location and will include suspended solids, known as "fluff", if present. Low frequency (24 kHz) survey data normally penetrates through this "fluff" layer to depict elevations of consolidated bottom material. Low frequency accuracies may vary depending on channel conditions and fathometer settings.

Sheet Reference Number
11 of 13

Revision Number:
4.2-202 (04/20)