

DISCLAIMER: The United States Government furnishes these data and the recipient accepts and uses them with the express understanding that they are not to be used for any purpose other than that for which they were prepared, or implied concerning the accuracy, completeness, reliability, or availability for any particular purpose of the recipient. The user is responsible for the results obtained from the use of these data for other than the intended purpose.

ACCESS: The recipient shall not disseminate these data, in whole or in part, to any person by reason of any contract, agreement, or other arrangement with the recipient. These data shall remain the property of the United States Government and shall not be used for any purpose other than that for which they were prepared.

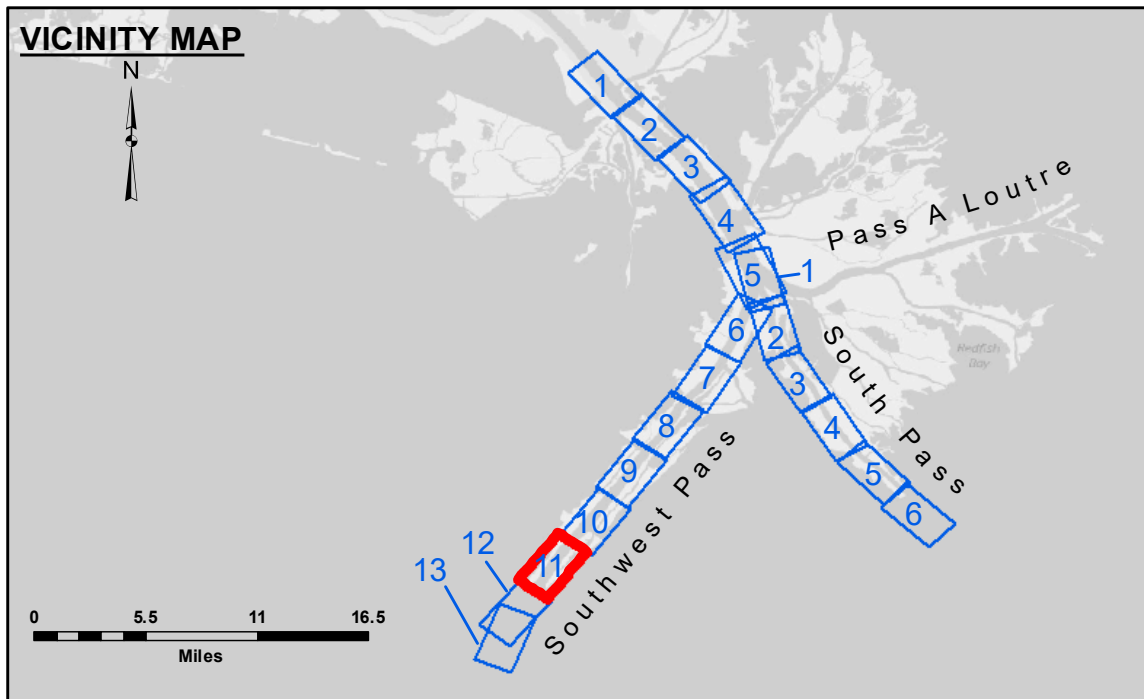
LIABILITY: The data represents the results of a collection of data for a specific US Army Corps of Engineers project. The user is responsible for the results obtained from the use of these data for other than the intended purpose.

DATE: Hydrographic survey data is subject to change and is not to be used for any purpose other than that for which it was collected. The user is responsible for the results obtained from the use of these data for other than the intended purpose.

INFORMATION: The information depicted on the map represents the results of a survey conducted on the date shown. It is not to be used for any purpose other than that for which it was collected. The user is responsible for the results obtained from the use of these data for other than the intended purpose.

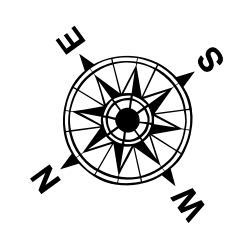
U.S. ARMY CORPS OF ENGINEERS NEW ORLEANS DISTRICT		
Submitted:	Surveyed By: JIC & MGF	Plotted By: TSS
Recommended:	Checked By: MSK	Checked By: MSK
Approved:		

**MISSISSIPPI RIVER - B.R. TO GULF
SOUTHWEST PASS - SHEET 11
SW_11_SWP_20230112_CS
12 January 2023**

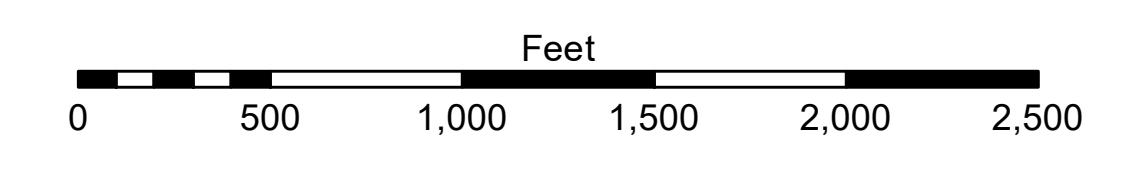


LEGEND

--- Federal Navigation Channel	● Cable Area	□ Borrow Area	■ -10' and above
— Federal Navigation Center Line	□ Placement Area	● Shoalest Sounding**	■ -10' to -20'
— As-built Pipeline/Cable	⊗ Anchorage Area	☆ Beacon, General	■ -20' to -30'
..... Unconfirmed Pipeline/Cable	⊗ Obstruction Point	◆ Red Navigation Buoy	■ -30' to -40'
— Project Depth Contour	⊗ Wrecks-Submerged	◆ Green Navigation Buoy	■ -40' to -45'
			■ -45' to -50'
			■ -50' to -55'
			■ -55' and below



Gage Reading: 0.7 MLLW @ MILE 17.9 @ 1055
Sea Conditions: ROUGH
Vessel Name: BLANCHARD
Survey Type: CONDITION, SB
Sounding Frequency***: LOW



NOTES:
Horizontal Coordinate System: North American Datum of 1983 (NAD83), projected to the State Plane Coordinate System (SPCS), Louisiana South Zone. Distance units in U.S. Survey Feet.
Vertical Datum: Soundings are shown in feet and indicate depths below Mean Lower Low Water (MLLW, 12-16). Datum Relationships for gage 01670 as of March 2020: 0.0' NAVD88, 2009.55 = 0.79' MLLW = 4.29' MLG
Distances on the Mississippi River, above and below Head of Passes are shown at 1 mile intervals.
The location of navigation aids are base on and provided by the U.S. Coast Guard.
2022 Aerial Photography data source: Optimal GEO (1998 DOQQ in green)
Reference is N.O.A. Navigation Chart No. 11361.
** Shoalest Sounding per Quarter per Reach.
*** High frequency (200 kHz) survey data represents the first signal return at a sounding location and will include suspended solids, known as "fluff", if present. Low frequency (24 kHz) survey data normally penetrates through this "fluff" layer to depict elevations of consolidated bottom material. Low frequency accuracies may vary depending on channel conditions and fathometer settings.

**Sheet Reference Number
11 of 13**