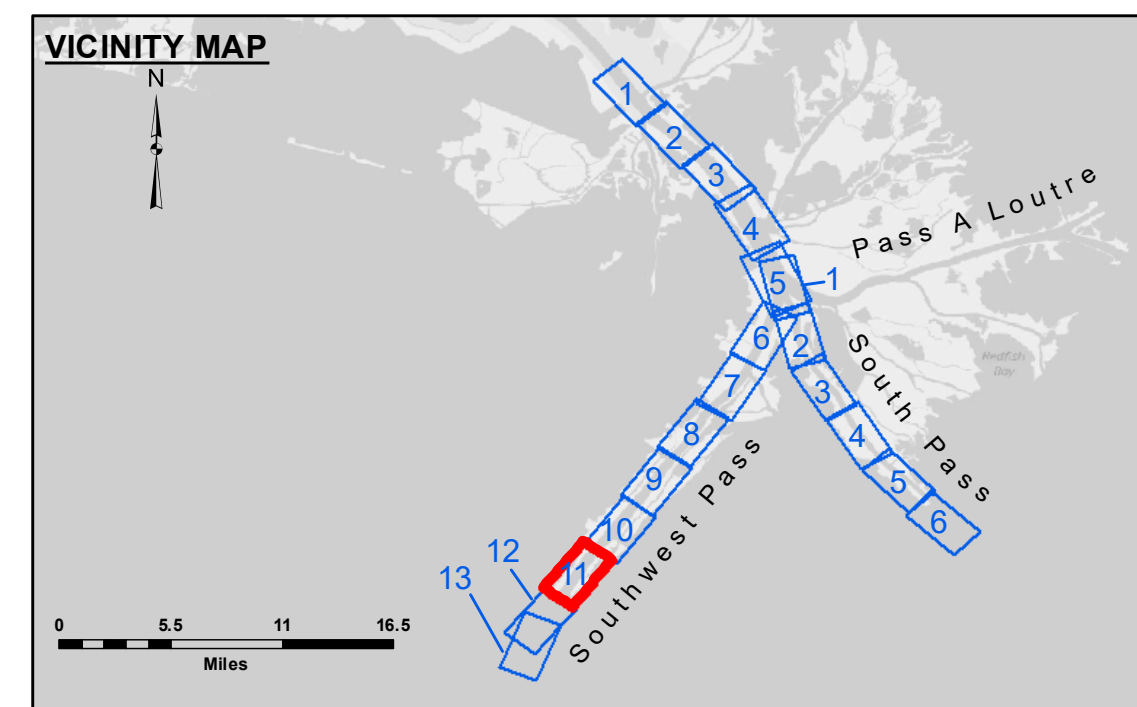


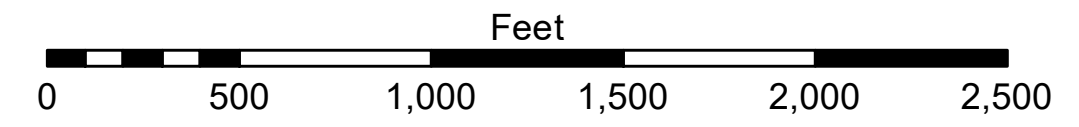
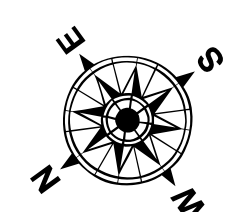
Accession: The United States Government furnishes these data and the recipient accepts and uses them with the express warranty that the data are for general informational purposes only. The data are not to be used for any purpose other than that for which they were originally collected. The user is responsible for the accuracy, reliability, usability, or availability for any particular purpose of the information derived from these data. The recipient may not transfer or disseminate these data to others without the express written consent of the United States Government. The information depicted on this map represents the results of a survey conducted on the date shown on the map. The information is not to be used for any purpose other than that for which it was collected. The user is responsible for the accuracy, reliability, usability, or availability for any particular purpose of the information derived from these data. The recipient may not transfer or disseminate these data to others without the express written consent of the United States Government.

| | |
|--|-----------------|
| U.S. ARMY CORPS OF ENGINEERS NEW ORLEANS DISTRICT | |
| Submitted: | Checked By: MSK |
| Recommended: | Checked By: MSK |
| Surveyed By: LLB & DBD | Plotted By: TSS |

**MISSISSIPPI RIVER - B.R. TO GULF
SOUTHWEST PASS - SHEET 11
SW_11_SWP_20230413_CS
13 April 2023**



| | | | |
|----------------------------------|---------------------|-------------------------|------------------|
| --- Federal Navigation Channel | ● Cable Area | ▭ Borrow Area | ■ -10' and above |
| — Federal Navigation Center Line | ▭ Placement Area | ● Shoalest Sounding** | ■ -10' to -20' |
| — As-built Pipeline/Cable | ⊗ Anchorage Area | ★ Beacon, General | ■ -20' to -30' |
| ····· Unconfirmed Pipeline/Cable | ⊗ Obstruction Point | ◆ Red Navigation Buoy | ■ -30' to -40' |
| — Project Depth Contour | ⚓ Wrecks-Submerged | ◆ Green Navigation Buoy | ■ -40' to -45' |
| | | | ■ -45' to -50' |
| | | | ■ -50' to -55' |
| | | | ■ -55' and below |



Gage Reading: 3.0 MLLW @ MILE 17.9 @ 1015
 Sea Conditions: CALM, FLUFF
 Vessel Name: BLANCHARD
 Survey Type: CONDITION, SB
 Sounding Frequency***: LOW

NOTES:
 Horizontal Coordinate System: North American Datum of 1983 (NAD83), projected to the State Plane Coordinate System (SPCS), Louisiana South Zone. Distance units in U.S. Survey Feet.
 Vertical Datum: Soundings are shown in feet and indicate depths below Mean Lower Low Water (MLLW, 12-16). Datum Relationships for gage 01670 as of March 2020: 0.0' NAVD83, 2009.55 = 0.79' MLLW = 4.29' MLG
 Distances on the Mississippi River, above and below Head of Passes are shown at 1 mile intervals.
 The location of navigation aids are base on and provided by the U.S. Coast Guard.
 2022 Aerial Photography data source: Optimal GEO (1998 DOQQ in green)
 Reference is N.O.A. Navigation Chart No. 11361.
 ** Shoalest Sounding per Quarter per Reach.
 *** High frequency (200 kHz) survey data represents the first signal return at a sounding location and will include suspended solids, known as "fluff", if present. Low frequency (24 kHz) survey data normally penetrates through this "fluff" layer to depict elevations of consolidated bottom material. Low frequency accuracies may vary depending on channel conditions and fathometer settings.

**Sheet Reference Number
11 of 13**

Revision Number: 4.2-20230420