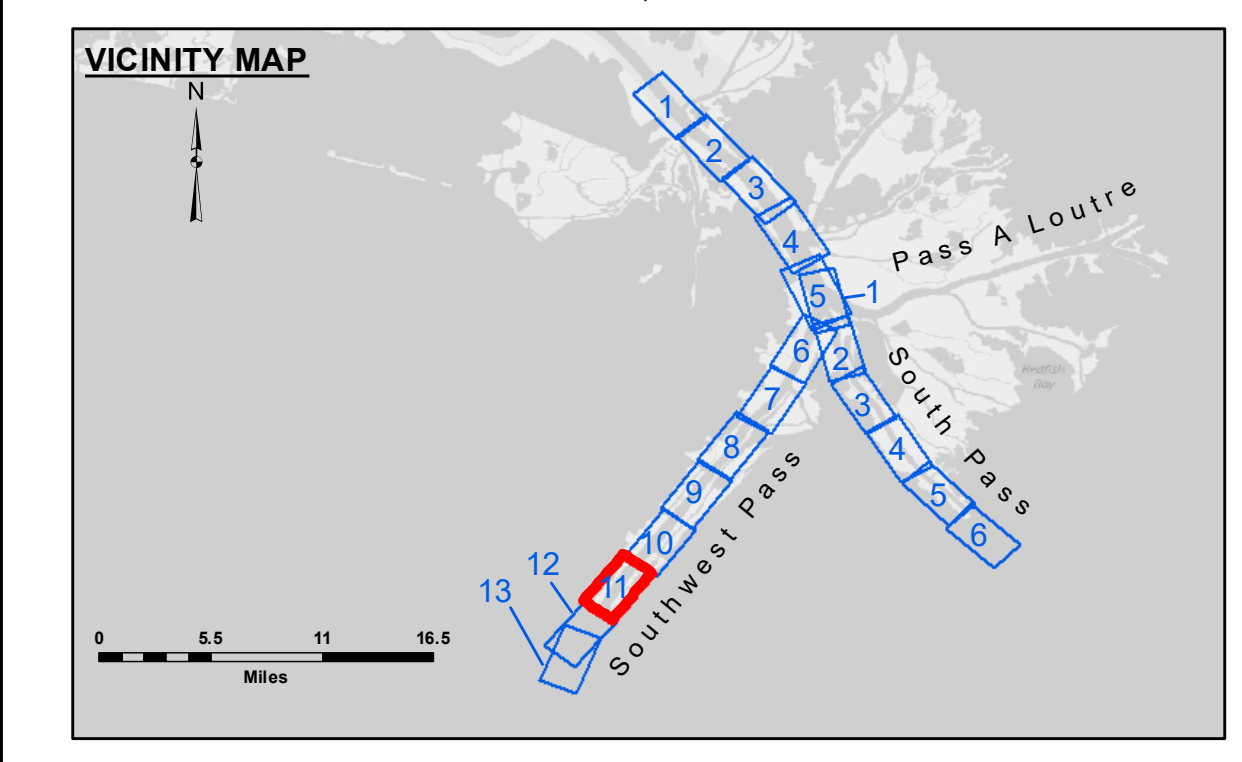
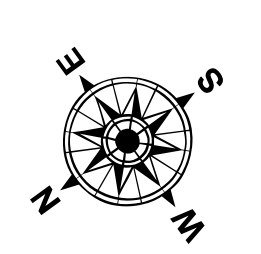


**DREDGE GLENN EDWARDS
DREDGING STATION 960+00 TO STATION 1185+00
FULL CHANNEL WIDTH SHEETS 11, 12 & 13**

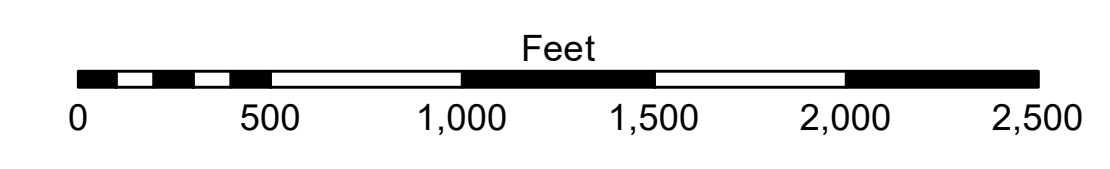


LEGEND

--- Federal Navigation Channel	● Cable Area	□ Borrow Area	■ -10' and above
— Federal Navigation Center Line	□ Placement Area	● Shoalest Sounding**	■ -10' to -20'
— As-built Pipeline/Cable	□ Anchorage Area	★ Beacon, General	■ -20' to -30'
..... Unconfirmed Pipeline/Cable	⊗ Obstruction Point	◆ Red Navigation Buoy	■ -30' to -40'
— Project Depth Contour	⚓ Wrecks-Submerged	◆ Green Navigation Buoy	■ -40' to -45'
			■ -45' to -50'
			■ -50' to -55'
			■ -55' and below



Gage Reading: 1.9 MLLW @ MILE 17.9 @ 1055
 Sea Conditions: CALM FLUFF
 Vessel Name: BLANCHARD
 Survey Type: CONDITION, SB
 Sounding Frequency***: LOW



NOTES:
 Horizontal Coordinate System: North American Datum of 1983 (NAD83), projected to the State Plane Coordinate System (SPCS), Louisiana South Zone. Distance units in U.S. Survey Feet.
 Vertical Datum: Soundings are shown in feet and indicate depths below Mean Lower Low Water (MLLW, 12-16). Datum Relationships for gage 01670 as of March 2020: 0.0' NAVD88, 2009.55 = 0.79' MLLW = 4.29' MLG
 Distances on the Mississippi River, above and below Head of Passes are shown at 1 mile intervals.
 The location of navigation aids are base on and provided by the U.S. Coast Guard.
 2022 Aerial Photography data source: Optimal GEO (1998 DOQQ in green)
 Reference is N.O.A. Navigation Chart No. 11361.
 ** Shoalest Sounding per Quarter per Reach.
 *** High frequency (200 kHz) survey data represents the first signal return at a sounding location and will include suspended solids, known as "fluff", if present. Low frequency (24 kHz) survey data normally penetrates through this "fluff" layer to depict elevations of consolidated bottom material. Low frequency accuracies may vary depending on channel conditions and fathometer settings.



DISCLAIMER: The United States Government furnishes these data and the recipient accepts and uses them with the express understanding that the data are not warranted for accuracy, reliability, usability, or availability for any particular purpose of the recipient. The user is responsible for the results obtained from the use of the data for other than the intended purpose. The user shall indemnify and hold the United States Government harmless from and against all claims, damages, and expenses, including reasonable attorneys' fees, that may be asserted against or incurred by the United States Government or any of its officers, employees, or agents, in connection with the use of the data for other than the intended purpose. The information depicted on the map represents the results of a survey conducted on or about the date of the survey. The user is responsible for the results of the survey. The user shall indemnify and hold the United States Government harmless from and against all claims, damages, and expenses, including reasonable attorneys' fees, that may be asserted against or incurred by the United States Government or any of its officers, employees, or agents, in connection with the use of the data for other than the intended purpose.

U.S. ARMY CORPS OF ENGINEERS
NEW ORLEANS DISTRICT

Submitted:	Chart Survey Section
Recommended:	TSS
Checked By:	MSK
Approved:	Chart Waterways Maintenance Section

**MISSISSIPPI RIVER - B.R. TO GULF
SOUTHWEST PASS - SHEET 11
SW_11_SWP_20230420_CS
20 April 2023**

**Sheet Reference Number
11 of 13**

Revision Number:
4.2-20230420