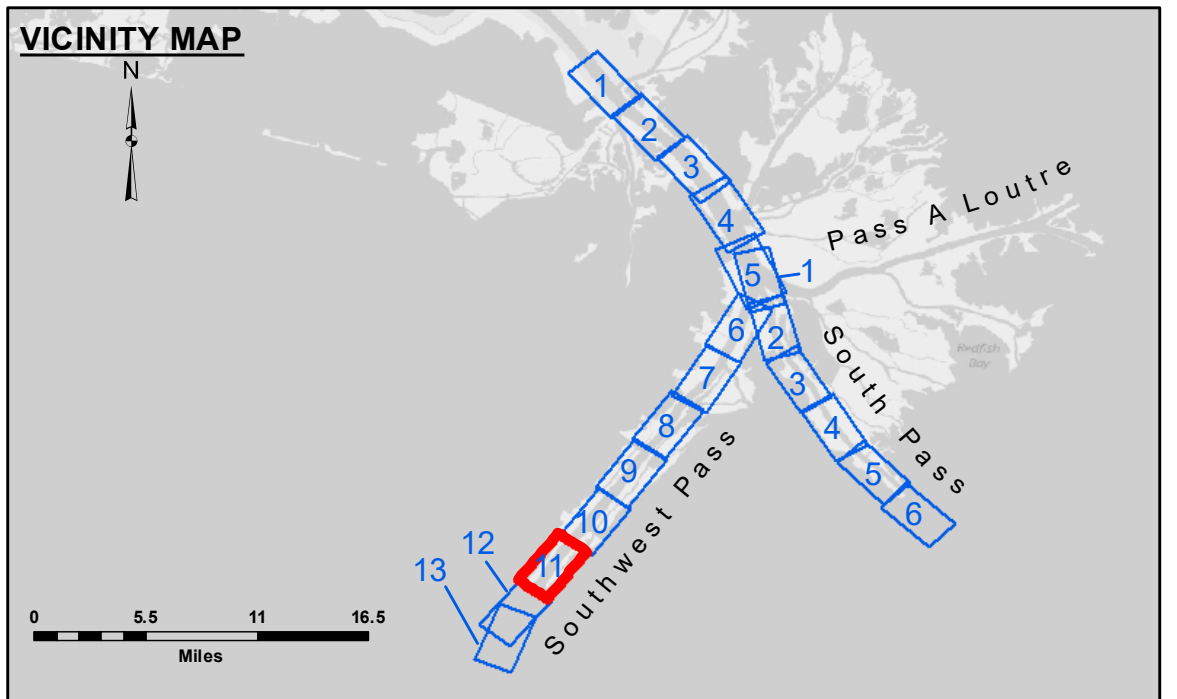


DISCLAIMER
 The data represented in this map is the result of data collected by the United States Government for a specific purpose. It is not intended for use for any other purpose. The user is responsible for the results of any use of this data. The user should consult the original data for more information. The information depicted on this map is for informational purposes only. It is not intended for use for any other purpose. The user is responsible for the results of any use of this data. The user should consult the original data for more information.

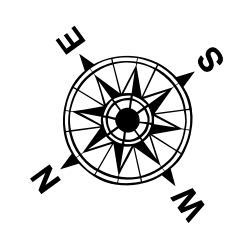
Submitted:	Chart Survey Section
Recommended:	LLB
Checked By:	MSK
Approved:	Chart Waterways Maintenance Section

MISSISSIPPI RIVER - B.R. TO GULF
SOUTHWEST PASS - SHEET 11
SW_11_SWP_20231005_CS
05 October 2023

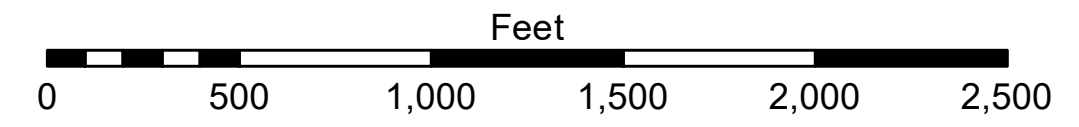


LEGEND

--- Federal Navigation Channel	○ Cable Area	□ Borrow Area	■ -10' and above
— Federal Navigation Center Line	□ Placement Area	● Shoalest Sounding**	■ -10' to -20'
— As-built Pipeline/Cable	⊗ Anchorage Area	☆ Beacon, General	■ -20' to -30'
..... Unconfirmed Pipeline/Cable	⊗ Obstruction Point	◆ Red Navigation Buoy	■ -30' to -40'
— Project Depth Contour	⊗ Wrecks-Submerged	◆ Green Navigation Buoy	■ -40' to -45'
			■ -45' to -50'
			■ -50' to -55'
			■ -55' and below



Gage Reading: 1.2 MLLW @ MILE 17.9 @ 1050
 Sea Conditions: CALM
 Vessel Name: BEAUVAIS
 Survey Type: CONDITION, SB
 Sounding Frequency***: LOW



NOTES:
 Horizontal Coordinate System: North American Datum of 1983 (NAD83), projected to the State Plane Coordinate System (SPCS), Louisiana South Zone. Distance units in U.S. Survey Feet.
 Vertical Datum: Soundings are shown in feet and indicate depths below Mean Lower Low Water (MLLW, 12-16). Datum Relationships for gage 01670 as of March 2020: 0.0' NAVD83, 2009.55 = 0.79' MLLW = 4.29' MLG
 Distances on the Mississippi River, above and below Head of Passes are shown at 1 mile intervals.
 The location of navigation aids are base on and provided by the U.S. Coast Guard.
 2022 Aerial Photography data source: Optimal GEO (1998 DOQQ in green)
 Reference is N.O.A. Navigation Chart No. 11361.
 ** Shoalest Sounding per Quarter per Reach.
 *** High frequency (200 kHz) survey data represents the first signal return at a sounding location and will include suspended solids, known as "fluff", if present. Low frequency (24 kHz) survey data normally penetrates through this "fluff" layer to depict elevations of consolidated bottom material. Low frequency accuracies may vary depending on channel conditions and fathometer settings.

Sheet Reference Number
11 of 13
 Revision Number: 4.2-20230420