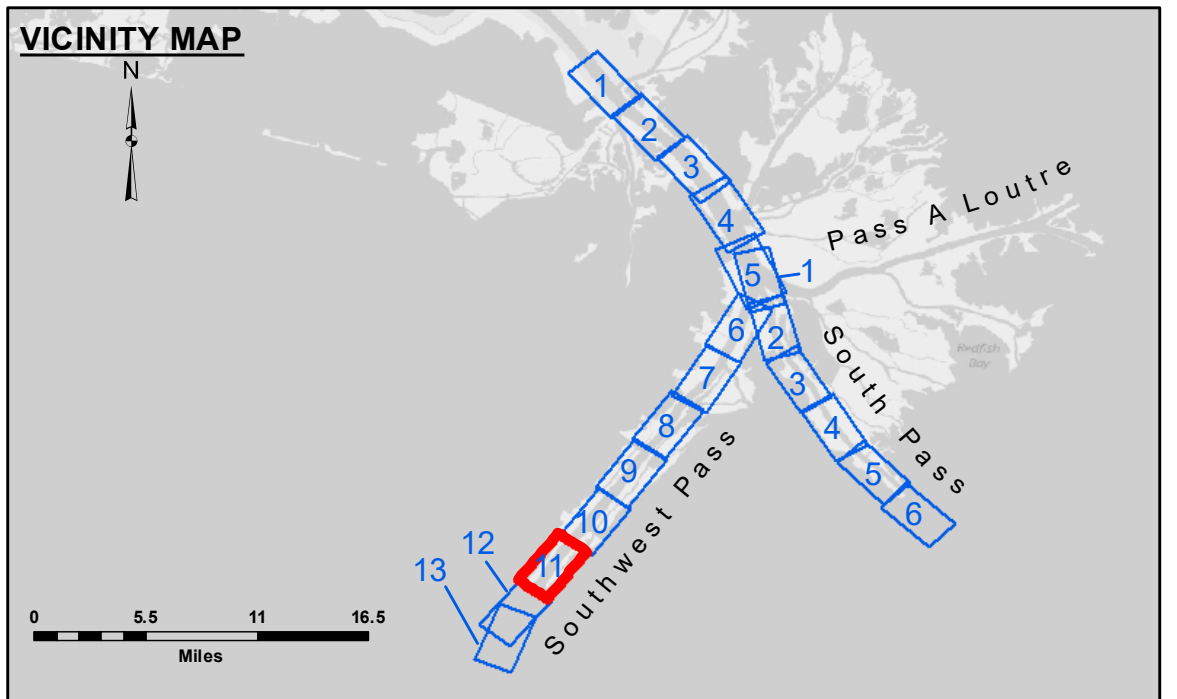


**DISCLAIMER**  
 The information depicted on this map represents the results of a survey conducted by the United States Army Corps of Engineers. The data is subject to change without notice. The user is responsible for the accuracy of the data. The information is provided for informational purposes only and is not intended to be used for navigation or other purposes. The user is advised to verify the accuracy of the data before using it for any purpose. The user is also advised to consult the appropriate regulations and standards for the use of this information. The user is further advised to consult the appropriate regulations and standards for the use of this information. The user is further advised to consult the appropriate regulations and standards for the use of this information.

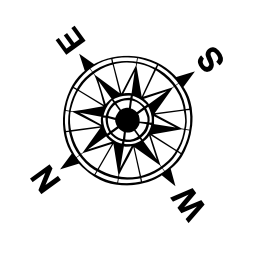
Submitted:	JUC & RCC
Recommended:	TSS
Approved:	MSK

U.S. ARMY CORPS OF ENGINEERS  
 NEW ORLEANS DISTRICT

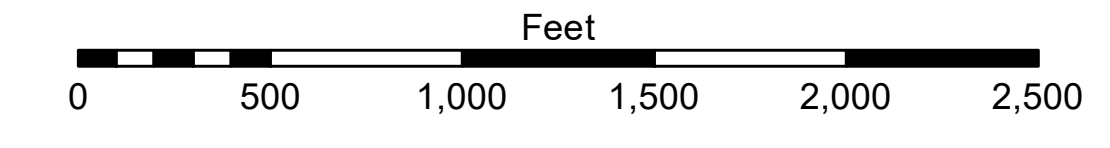
**MISSISSIPPI RIVER - B.R. TO GULF  
 SOUTHWEST PASS - SHEET 11  
 SW\_11\_SWP\_20240613\_CS  
 13 June 2024**



LEGEND	
--- Federal Navigation Channel	● Cable Area
— Federal Navigation Center Line	□ Placement Area
— As-built Pipeline/Cable	⊗ Obstruction Point
..... Unconfirmed Pipeline/Cable	✦ Wrecks-Submerged
— Project Depth Contour	
3 Fluff Thickness (feet)*	□ Borrow Area
● Shoalest Sounding**	☆ Beacon, General
☆ Red Navigation Buoy	◆ Green Navigation Buoy
■ -10' and above	
■ -10' to -20'	
■ -20' to -30'	
■ -30' to -40'	
■ -40' to -45'	
■ -45' to -50'	
■ -50' to -55'	
■ -55' and below	



Gage Reading: 1.8 MLLW @ EAST JETTY (01670) @ 1055  
 Sea Conditions: CALM  
 Vessel Name: TOBIN  
 Survey Type: CONDITION, SB  
 Sounding Frequency\*\*\*: LOW



**NOTES:**  
 Horizontal Coordinate System: North American Datum of 1983 (NAD83), projected to the State Plane Coordinate System (SPCS), Louisiana South Zone. Distance units in U.S. Survey Feet.  
 Vertical Datum: 0.0' NAVD83, 2009.55 = 0.79' MLLW = 4.29' MLG  
 Soundings are shown in feet and indicate depths below Mean Lower Low Water (MLLW, 12-16). Datum Relationships for gage 01670 as of March 2020:  
 Distances on the Mississippi River, above and below Head of Passes are shown at 1 mile intervals.  
 The location of navigation aids are base on and provided by the U.S. Coast Guard.  
 2022 Aerial Photography data source: Optimal GEO (1998 DOQQ in green)  
 Reference is N.O.A. Navigation Chart No. 11361.  
 \*\* Shoalest Sounding per Quarter per Reach.  
 \*\*\* High frequency (200 kHz) survey data represents the first signal return at a sounding location and will include suspended solids, known as "fluff", if present. Low frequency (24 kHz) survey data normally penetrates through this "fluff" layer to depict elevations of consolidated bottom material. Low frequency accuracies may vary depending on channel conditions and fathometer settings.

**Sheet Reference Number  
 11 of 13**

Revision Number: 4.2-202 (04/20)