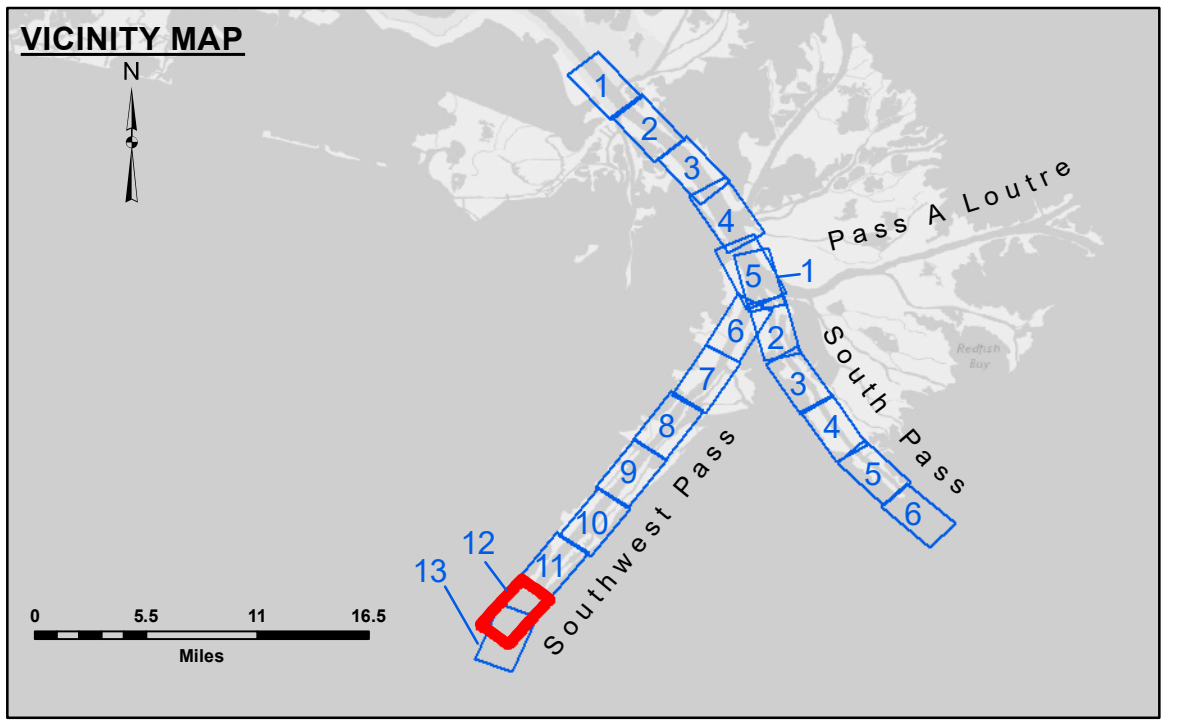
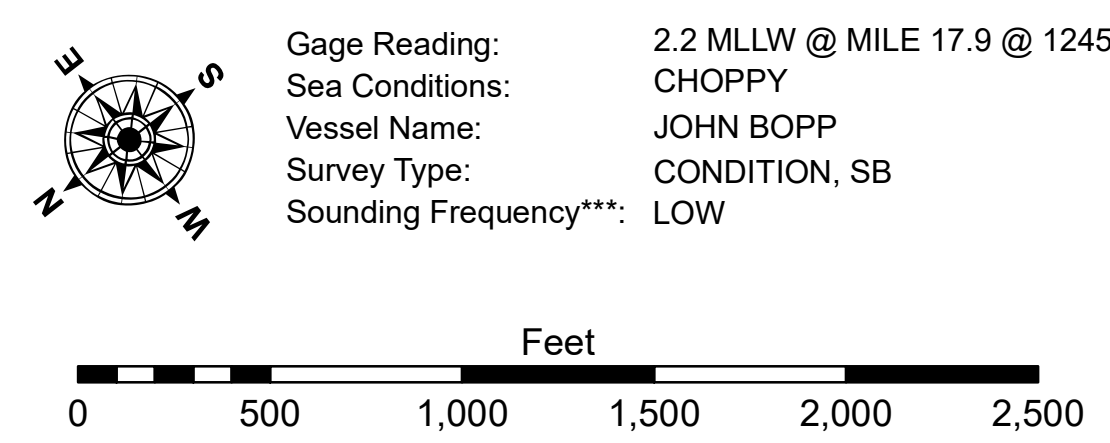


DREDGE STUYVESANT  
DREDGING STATION 1020+00 TO STATION 1230+00  
FULL CHANNEL WIDTH SHEETS 12 & 13



**LEGEND**

— Federal Navigation Channel	○ Cable Area	□ Borrow Area	■ -10' and above
— Federal Navigation Center Line	□ Placement Area	● Shoalest Sounding**	■ -10' to -20'
— As-built Pipeline/Cable	□ Anchorage Area	★ Beacon, General	■ -20' to -30'
..... Unconfirmed Pipeline/Cable	⊗ Obstruction Point	◆ Red Navigation Buoy	■ -30' to -40'
— Project Depth Contour	⚓ Wrecks-Submerged	◆ Green Navigation Buoy	■ -40' to -45'
			■ -45' to -50'
			■ -50' to -55'
			■ -55' and below



**NOTES:**  
 Horizontal Coordinate System:  
 North American Datum of 1983 (NAD83), projected to the State Plane Coordinate System (SPCS), Louisiana South Zone. Distance units in U.S. Survey Feet.  
 Vertical Datum:  
 Soundings are shown in feet and indicate depths below Mean Lower Low Water (MLLW, 12-16).  
 Datum Relationships for gage 01670 as of March 2020:  
 0.0' NAVD83, 2009.55 = 0.79' MLLW = 4.29' MLG  
 Distances on the Mississippi River, above and below Head of Passes are shown at 1 mile intervals.  
 The location of navigation aids are base on and provided by the U.S. Coast Guard.  
 2016 Aerial Photography data source: Precision Aerial Reconnaissance, LLC (1998 DOQQ in green)  
 Reference is N.O.A. Navigation Chart No. 11361.  
 \*\* Shoalest Sounding per Quarter per Reach.  
 \*\*\* High frequency (200 kHz) survey data represents the first signal return at a sounding location and will include suspended solids, known as "fluff", if present. Low frequency (24 kHz) survey data normally penetrates through this "fluff" layer to depict elevations of consolidated bottom material. Low frequency accuracies may vary depending on channel conditions and fathometer settings.



**DISCLAIMER:** The United States Government furnishes these data and the recipient accepts and uses them with the express understanding that the data are not warranted for accuracy, completeness, reliability, usability or suitability for any particular purpose of the recipient. The user is responsible for the results of any use of the data. The user agrees to hold the United States Government harmless under no liability whatsoever to any person by reason of any use of the data. The user agrees to accept the data as provided and to accept full responsibility for any errors or omissions in the data. The user agrees to indemnify and hold the United States Government harmless from and against all claims, damages, costs and expenses, including reasonable attorneys' fees, that may be asserted against or incurred by the United States Government in connection with the use of the data. The user agrees to release the United States Government from and against all claims, damages, costs and expenses, including reasonable attorneys' fees, that may be asserted against or incurred by the user in connection with the use of the data. The user agrees to release the United States Government from and against all claims, damages, costs and expenses, including reasonable attorneys' fees, that may be asserted against or incurred by the user in connection with the use of the data. The user agrees to release the United States Government from and against all claims, damages, costs and expenses, including reasonable attorneys' fees, that may be asserted against or incurred by the user in connection with the use of the data.

U.S. ARMY CORPS OF ENGINEERS NEW ORLEANS DISTRICT	
Submitted:	JH & RCC
Recommended:	TSS
Approved:	MSK

**MISSISSIPPI RIVER - B.R. TO GULF  
SOUTHWEST PASS - SHEET 12  
SW\_12\_SWP\_20210401\_CS\_PRO  
01 April 2021**

**Sheet  
Reference  
Number  
12 of 13**

Revision Number:  
4.1-20191105