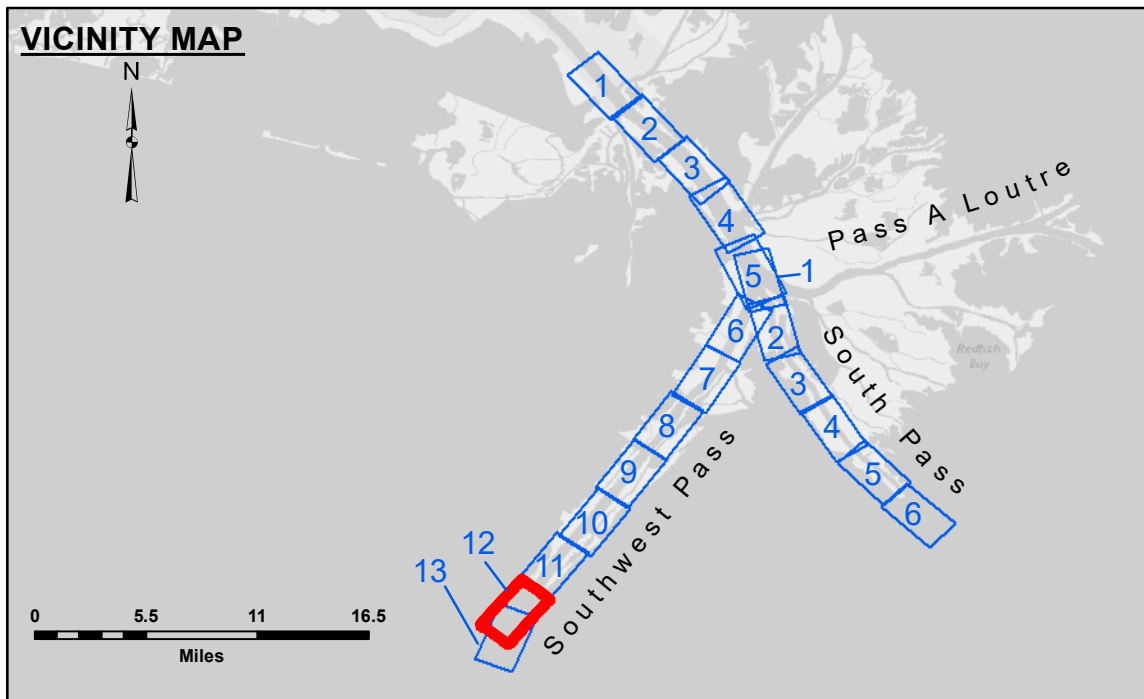


DREDGE GLENN EDWARDS
DREDGING STATION 1020+00 TO STATION 1125+00
FULL CHANNEL WIDTH



LEGEND

--- Federal Navigation Channel	○ Cable Area	□ Borrow Area	■ -10' and above
— Federal Navigation Center Line	□ Placement Area	● Shoalest Sounding**	■ -10' to -20'
— As-built Pipeline/Cable	□ Anchorage Area	★ Beacon, General	■ -20' to -30'
..... Unconfirmed Pipeline/Cable	⊗ Obstruction Point	◆ Red Navigation Buoy	■ -30' to -40'
— Project Depth Contour	⚓ Wrecks-Submerged	◆ Green Navigation Buoy	■ -40' to -45'
			■ -45' to -50'
			■ -50' to -55'
			■ -55' and below

Gage Reading: 1.9 MLLW @ MILE 17.9 @ 1245
 Sea Conditions: CALM
 Vessel Name: BEAUVAIS
 Survey Type: CONDITION, SB
 Sounding Frequency***: LOW

Feet
 0 500 1,000 1,500 2,000 2,500

NOTES:
 Horizontal Coordinate System: North American Datum of 1983 (NAD83), projected to the State Plane Coordinate System (SPCS), Louisiana South Zone. Distance units in U.S. Survey Feet.
 Vertical Datum: Soundings are shown in feet and indicate depths below Mean Lower Low Water (MLLW, 12-16). Datum Relationships for gage 01670 as of March 2020: 0.0' NAVD83, 2009.55 = 0.79' MLLW = 4.29' MLG
 Distances on the Mississippi River, above and below Head of Passes are shown at 1 mile intervals.
 The location of navigation aids are base on and provided by the U.S. Coast Guard.
 2016 Aerial Photography data source: Precision Aerial Reconnaissance, LLC (1998 DOQQ in green)
 Reference is N.O.A. Navigation Chart No. 11361.
 ** Shoalest Sounding per Quarter per Reach.
 *** High frequency (200 kHz) survey data represents the first signal return at a sounding location and will include suspended solids, known as "fluff", if present. Low frequency (24 kHz) survey data normally penetrates through this "fluff" layer to depict elevations of consolidated bottom material. Low frequency accuracies may vary depending on channel conditions and fathometer settings.



DISCLAIMER: The United States Government furnishes these data and the recipient accepts and uses them with the express understanding that they are not to be used for any purpose other than that for which they were prepared, or implied concerning the accuracy, completeness, reliability, usability or suitability for any particular purpose of the recipient. The recipient understands that the data are provided under no liability whatsoever to any person by reason of any use of the data. The recipient agrees to indemnify and hold the United States Government harmless from any and all claims, damages, losses, and expenses, including reasonable attorneys' fees, that may be incurred by the United States Government as a result of the recipient's use of the data. The recipient may not transfer these data to others without also transmitting this Disclaimer. The information depicted on this map represents the results of a hydrographic survey conducted by the United States Army Corps of Engineers. The information is not to be used for any purpose other than that for which it was prepared. The recipient understands that the data are provided under no liability whatsoever to any person by reason of any use of the data. The recipient agrees to indemnify and hold the United States Government harmless from any and all claims, damages, losses, and expenses, including reasonable attorneys' fees, that may be incurred by the United States Government as a result of the recipient's use of the data. The recipient may not transfer these data to others without also transmitting this Disclaimer.

U.S. ARMY CORPS OF ENGINEERS NEW ORLEANS DISTRICT	
Submitted:	Surveyed By: JUC & MGF
Recommended:	Plotted By: TSS
Approved:	Checked By: MSK

**MISSISSIPPI RIVER - B. R. TO GULF
 SOUTHWEST PASS - SHEET 12
 SW_12_SWP_20210427_CS_PRO
 27 April 2021**

**Sheet Reference Number
 12 of 13**