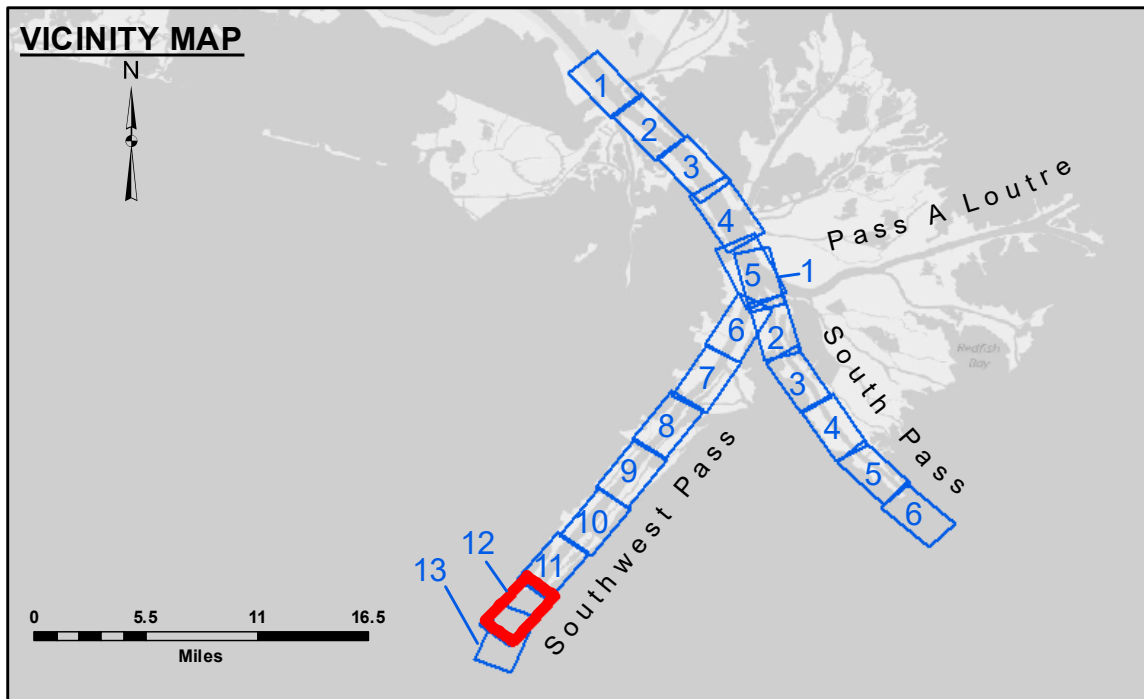


**Accession:** The United States Government furnishes these data and the recipient accepts and uses them with the express understanding that this information is not to be distributed, copied, reprinted, or used for any purpose other than that for which it was originally prepared. The user is responsible for the results and accuracy of any information derived from this information. The user is responsible for the results and accuracy of any information derived from this information. The user is responsible for the results and accuracy of any information derived from this information.

**Distribution:** This data is for the use of the recipient only. It is not to be distributed, copied, reprinted, or used for any purpose other than that for which it was originally prepared. The user is responsible for the results and accuracy of any information derived from this information.

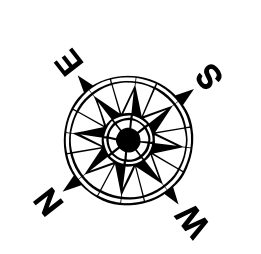
U.S. ARMY CORPS OF ENGINEERS NEW ORLEANS DISTRICT			
Submitted:	JUC & MGF	Plotted By:	TSS
Recommended:	Chart Survey Section	Checked By:	MSK
Approved:	Chart Waterways Maintenance Section		

**MISSISSIPPI RIVER - B.R. TO GULF  
SOUTHWEST PASS - SHEET 12**  
SW\_12\_SWP\_20230112\_CS  
12 January 2023

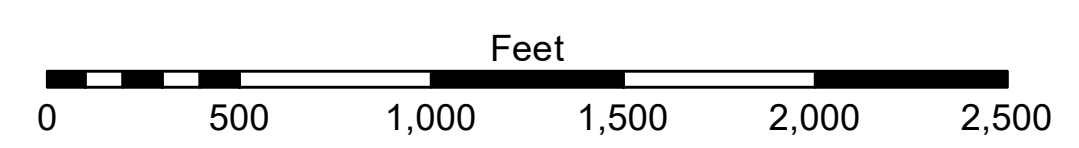


**LEGEND**

- Federal Navigation Channel
- Federal Navigation Center Line
- As-built Pipeline/Cable
- ..... Unconfirmed Pipeline/Cable
- Project Depth Contour
- Cable Area
- Placement Area
- Anchorage Area
- ⊗ Obstruction Point
- ✦ Wrecks-Submerged
- Borrow Area
- Shoalest Sounding\*\*
- ★ Beacon, General
- ◆ Red Navigation Buoy
- ◆ Green Navigation Buoy
- -10' and above
- -10' to -20'
- -20' to -30'
- -30' to -40'
- -40' to -45'
- -45' to -50'
- -50' to -55'
- -55' and below



Gage Reading: 0.7 MLLW @ MILE 17.9 @ 1055  
Sea Conditions: ROUGH  
Vessel Name: BLANCHARD  
Survey Type: CONDITION, SB  
Sounding Frequency\*\*\*: LOW



**NOTES:**  
Horizontal Coordinate System: North American Datum of 1983 (NAD83), projected to the State Plane Coordinate System (SPCS), Louisiana South Zone. Distance units in U.S. Survey Feet.  
Vertical Datum: Soundings are shown in feet and indicate depths below Mean Lower Low Water (MLLW, 12-16). Datum Relationships for gage 01670 as of March 2020: 0.0' NAVD83, 2009.55 = 0.79' MLLW = 4.29' MLG  
Distances on the Mississippi River, above and below Head of Passes are shown at 1 mile intervals.  
The location of navigation aids are based on and provided by the U.S. Coast Guard.  
2022 Aerial Photography data source: Optimal GEO (1998 DOQQ in green)  
Reference is N.O.A. Navigation Chart No. 11361.  
\*\* Shoalest Sounding per Quarter per Reach.  
\*\*\* High frequency (200 kHz) survey data represents the first signal return at a sounding location and will include suspended solids, known as "fluff", if present. Low frequency (24 kHz) survey data normally penetrates through this "fluff" layer to depict elevations of consolidated bottom material. Low frequency accuracies may vary depending on channel conditions and fathometer settings.

**Sheet Reference Number**  
12 of 13