

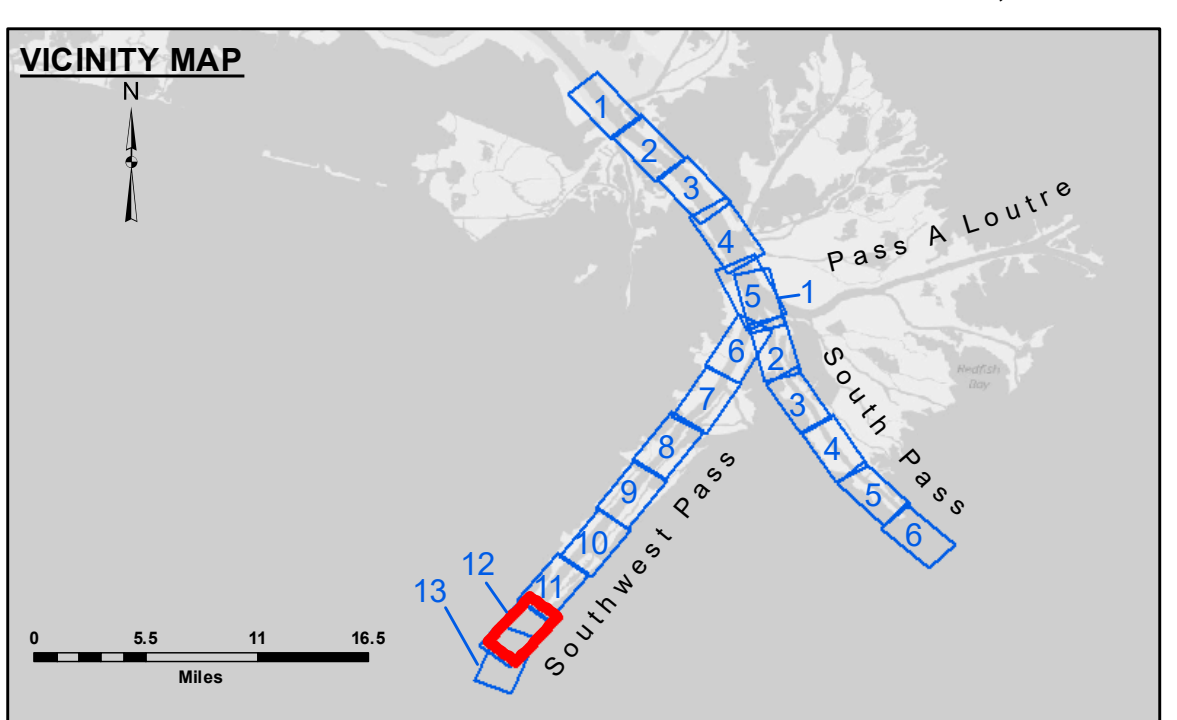
DISCLAIMER: The data represents the results of data collection/processing for a specific US Army Corps of Engineers project. It is only valid for its intended use, content, time and accuracy specifications. The user is responsible for the results and accuracy of the data. Approximation of the data for other than its intended purpose. Data Constants: Hydrographic survey data is subject to change regularly due to several factors including but not limited to dredging operations, sedimentation, and changes in the bathymetry of the area. The user is responsible for the accuracy of the data. The information depicted on this map represents the results of a survey conducted on the date of the survey. It is considered to represent the general condition existing at that time.

**U.S. ARMY CORPS OF ENGINEERS
NEW ORLEANS DISTRICT**

Submitted:	Surveyed By: JTB & DBD
Recommended: Chief Survey Section	Plotted By: TSS
Approved: Chief Waterways Maintenance Section	Checked By: MSK

**MISSISSIPPI RIVER - B.R. TO GULF
SOUTHWEST PASS - SHEET 12
SW_12_SWP_20230504_CS
04 May 2023**

**Sheet
Reference
Number
12 of 13**



LEGEND

--- Federal Navigation Channel	● Cable Area	■ Borrow Area	■ -10' and above
— Federal Navigation Center Line	■ Placement Area	● Shoalest Sounding**	■ -10' to -20'
— As-built Pipeline/Cable	■ Anchorage Area	★ Beacon, General	■ -20' to -30'
... Unconfirmed Pipeline/Cable	⊗ Obstruction Point	◆ Red Navigation Buoy	■ -30' to -40'
— Project Depth Contour	★ Wrecks-Submerged	◆ Green Navigation Buoy	■ -40' to -45'
			■ -45' to -50'
			■ -50' to -55'
			■ -55' and below

Gage Reading: 1.5 MLLW @ MILE 17.9 @ 1144
 Sea Conditions: CALM
 Vessel Name: BLANCHARD
 Survey Type: CONDITION, SB
 Sounding Frequency***: LOW

Feet

NOTES:
 Horizontal Coordinate System: North American Datum of 1983 (NAD83), projected to the State Plane Coordinate System (SPCS), Louisiana South Zone. Distance units in U.S. Survey Feet.
 Vertical Datum: Soundings are shown in feet and indicate depths below Mean Lower Low Water (MLLW, 12-16). Datum Relationships for gage 01670 as of March 2020: 0.0' NAVD83, 2009.55 = 0.79' MLLW = 4.29' MLG
 Distances on the Mississippi River, above and below Head of Passes are shown at 1 mile intervals.
 The location of navigation aids are base on and provided by the U.S. Coast Guard.
 2022 Aerial Photography data source: Optimal GEO (1998 DOQQ in green)
 Reference is N.O.A. Navigation Chart No. 11361.
 ** Shoalest Sounding per Quarter per Reach.
 *** High frequency (200 kHz) survey data represents the first signal return at a sounding location and will include suspended solids, known as "fluff", if present. Low frequency (24 kHz) survey data normally penetrates through this "fluff" layer to depict elevations of consolidated bottom material. Low frequency accuracies may vary depending on channel conditions and fathometer settings.