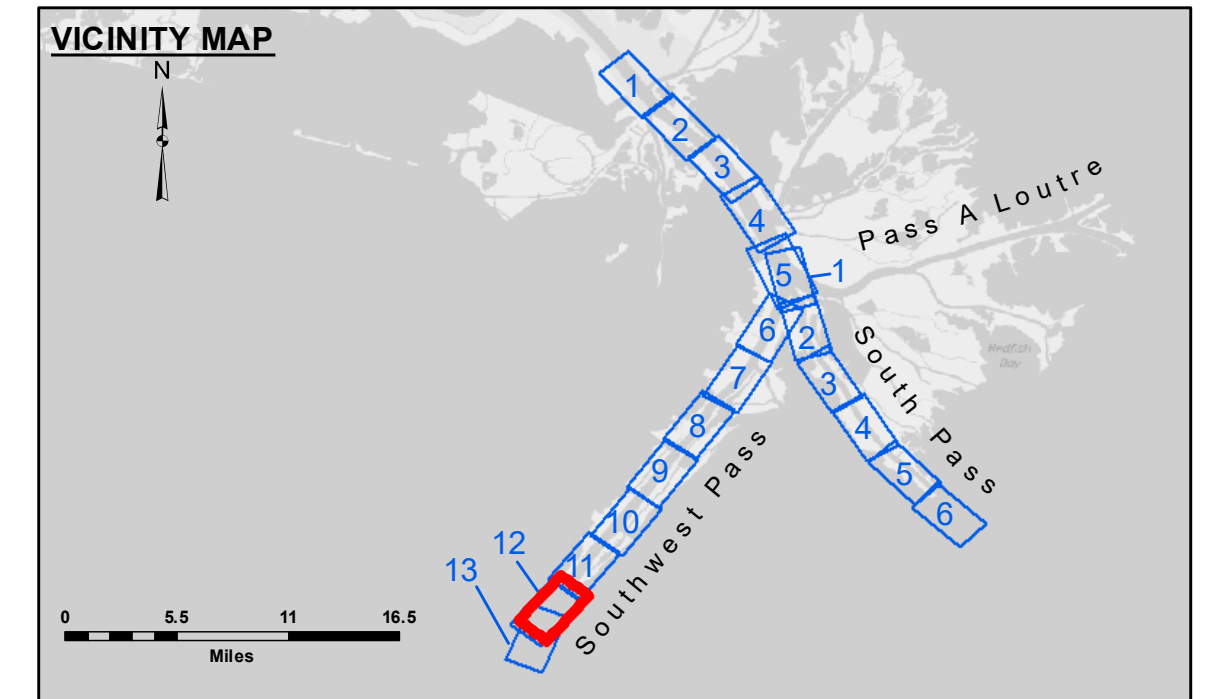
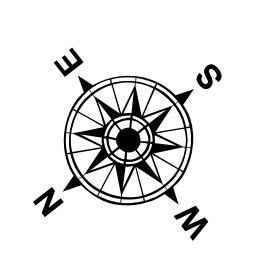


DREDGE WHEELER
DREDGING STATION 960+00 TO STATION 1130+00
FULL CHANNEL WIDTH SHEETS 11 & 12

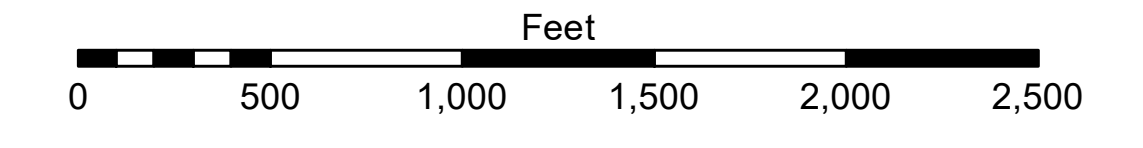


LEGEND

- - - Federal Navigation Channel	● Cable Area	□ Borrow Area	■ -10' and above
— Federal Navigation Center Line	■ Placement Area	● Shoalest Sounding**	■ -10' to -20'
— As-built Pipeline/Cable	□ Anchorage Area	★ Beacon, General	■ -20' to -30'
..... Unconfirmed Pipeline/Cable	⊗ Obstruction Point	◆ Red Navigation Buoy	■ -30' to -40'
— Project Depth Contour	★ Wrecks-Submerged	◆ Green Navigation Buoy	■ -40' to -45'
			■ -45' to -50'
			■ -50' to -55'
			■ -55' and below



Gage Reading: 2.1 MLLW @ MILE 17.9 @ 1115
 Sea Conditions: CALM
 Vessel Name: TOBIN
 Survey Type: CONDITION, SB
 Sounding Frequency***: LOW



NOTES:
 Horizontal Coordinate System: North American Datum of 1983 (NAD83), projected to the State Plane Coordinate System (SPCS), Louisiana South Zone. Distance units in U.S. Survey Feet.
 Vertical Datum: Soundings are shown in feet and indicate depths below Mean Lower Low Water (MLLW, 12-16). Datum Relationships for gage 01670 as of March 2020: 0.0' NAVD83, 2009.55 = 0.79' MLLW = 4.29' MLG
 Distances on the Mississippi River, above and below Head of Passes are shown at 1 mile intervals.
 The location of navigation aids are base on and provided by the U.S. Coast Guard.
 2022 Aerial Photography data source: Optimal GEO (1998 DOQQ in green)
 Reference is N.O.A. Navigation Chart No. 11361.
 ** Shoalest Sounding per Quarter per Reach.
 *** High frequency (200 kHz) survey data represents the first signal return at a sounding location and will include suspended solids, known as "fluff", if present. Low frequency (24 kHz) survey data normally penetrates through this "fluff" layer to depict elevations of consolidated bottom material. Low frequency accuracies may vary depending on channel conditions and fathometer settings.



DISCLAIMER: The United States Government furnishes these data and the recipient accepts and uses them with the express understanding that the Government makes no warranty, expressed or implied, regarding the accuracy, completeness, reliability, usability or suitability for any particular purpose of the information. The user is responsible for the results of the use of the information. The user shall not be held liable for any damages, under no liability whatsoever to any person by reason of any use of the information. These data are being provided for informational purposes only and are not intended for use in any project. The user shall be responsible for the accuracy of the information. The user shall be responsible for the accuracy of the information. The user shall be responsible for the accuracy of the information. The user shall be responsible for the accuracy of the information. The user shall be responsible for the accuracy of the information.

U.S. ARMY CORPS OF ENGINEERS
NEW ORLEANS DISTRICT

Submitted:	Surveyed By: JH & RCC
Recommended:	Plotted By: TSS
Approved:	Checked By: MSK

**MISSISSIPPI RIVER - B.R. TO GULF
 SOUTHWEST PASS - SHEET 12
 SW_12_SWP_20230621_CS
 21 June 2023**

**Sheet Reference Number
 12 of 13**