

Access/Control: The United States Government furnishes these data and the recipient accepts and uses them with the express understanding that the data are not to be used for any purpose other than that for which they were originally collected, compiled, or processed, and that the data are not to be used for any purpose other than that for which they were originally collected, compiled, or processed, and that the data are not to be used for any purpose other than that for which they were originally collected, compiled, or processed.

Distribution Liability: The data represents the results of data collection/processing for a specific US Army Corps of Engineers project. It is only valid for its intended use, contract, time and accuracy specifications. The user is responsible for the results of any use of the data for other than its intended purpose.

Data: Constant Hydrographic survey data is subject to change and may be updated from time to time. The user is responsible for the results of any use of the data for other than its intended purpose. The user is responsible for the results of any use of the data for other than its intended purpose.

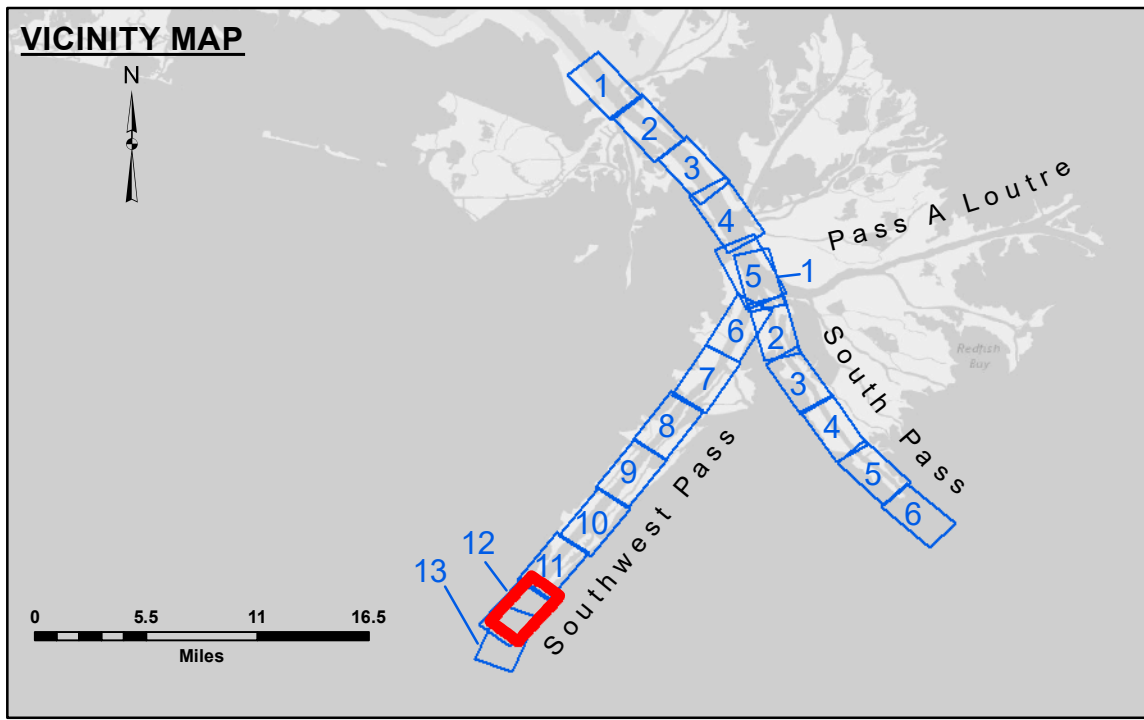
Disclaimer: The information depicted on this map represents the results of a hydrographic survey conducted by the United States Army Corps of Engineers. The information is not to be used for any purpose other than that for which it was collected, compiled, or processed. The user is responsible for the results of any use of the data for other than its intended purpose.

Submitted:	Surveyed By:	JH & RCC
Recommended:	Plotted By:	TSS
Approved:	Checked By:	MSK

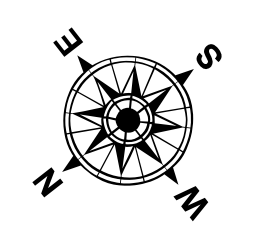
U.S. ARMY CORPS OF ENGINEERS
NEW ORLEANS DISTRICT

**MISSISSIPPI RIVER - B. R. TO GULF
SOUTHWEST PASS - SHEET 12
SW_12_SWP_20240404_CS
04 April 2024**

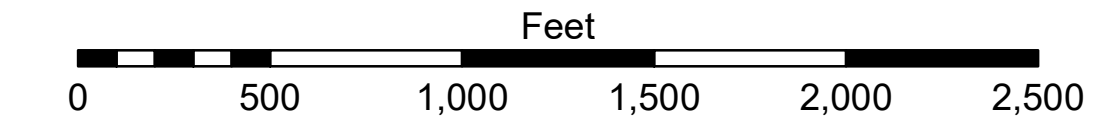
**Sheet Reference Number
12 of 13**



LEGEND			
--- Federal Navigation Channel	○ Cable Area	□ Borrow Area	■ -10' and above
— Federal Navigation Center Line	□ Placement Area	● Shoalest Sounding**	■ -10' to -20'
— As-built Pipeline/Cable	□ Anchorage Area	★ Beacon, General	■ -20' to -30'
..... Unconfirmed Pipeline/Cable	⊗ Obstruction Point	◆ Red Navigation Buoy	■ -30' to -40'
— Project Depth Contour	★ Wrecks-Submerged	◆ Green Navigation Buoy	■ -40' to -45'
			■ -45' to -50'
			■ -50' to -55'
			■ -55' and below



Gage Reading: 1.2 MLLW @ EAST JETTY (01670) @ 1110
Sea Conditions: CALM
Vessel Name: TOBIN
Survey Type: CONDITION, SB
Sounding Frequency***: LOW



NOTES:
Horizontal Coordinate System: North American Datum of 1983 (NAD83), projected to the State Plane Coordinate System (SPCS), Louisiana South Zone. Distance units in U.S. Survey Feet.
Vertical Datum: 0.0' NAVD83, 2009.55 = 0.79' MLLW = 4.29' MLG
Soundings are shown in feet and indicate depths below Mean Lower Low Water (MLLW, 12-16). Datum Relationships for gage 01670 as of March 2020: 0.0' NAVD83, 2009.55 = 0.79' MLLW = 4.29' MLG
Distances on the Mississippi River, above and below Head of Passes are shown at 1 mile intervals.
The location of navigation aids are base on and provided by the U.S. Coast Guard.
2022 Aerial Photography data source: Optimal GEO (1998 DOQQ in green)
Reference is N.O.A. Navigation Chart No. 11361.
** Shoalest Sounding per Quarter per Reach.
*** High frequency (200 kHz) survey data represents the first signal return at a sounding location and will include suspended solids, known as "fluff", if present. Low frequency (24 kHz) survey data normally penetrates through this "fluff" layer to depict elevations of consolidated bottom material. Low frequency accuracies may vary depending on channel conditions and fathometer settings.