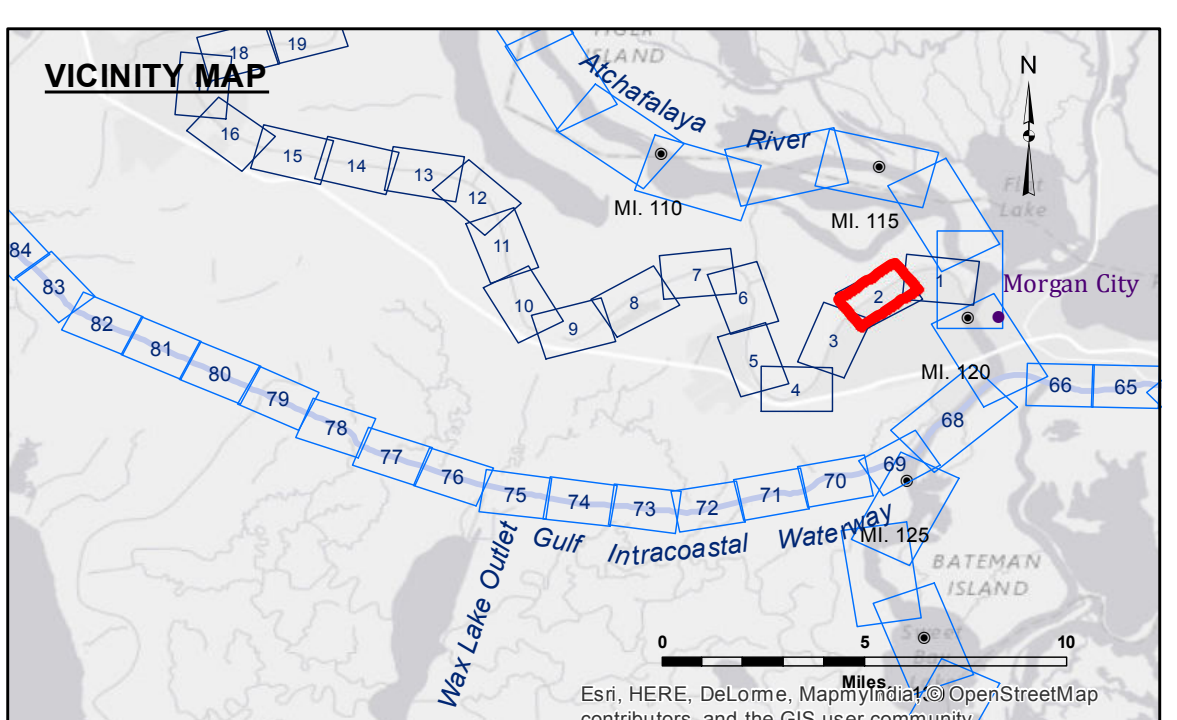


**DISCLAIMER:** The data represents the results of data collection processing for a specific US Army Corps of Engineers project. The data is only valid for its intended use, and accuracy is not guaranteed. The user is responsible for the results. The application of the data for other than its intended purpose is at the user's risk. Hydrographic survey data is subject to change due to several factors including but not limited to dredging, sedimentation, and changes in bathymetry. The US Army Corps of Engineers is not responsible for changes in the hydrographical conditions when developed after the date of the survey. The information depicted on this map represents the results of a survey conducted under the general condition existing at that time. Internal use only. Product maintainers should not rely solely on this report.

Submitted:	Surveyed By:
Recommended:	DS/PS
Approved:	Plotted By:
Chief, Waterways Maintenance Section	BD
	Checked By:
	AC

**BAYOU TECHE  
BERWICK TO WAX LAKE  
TC\_02\_B2W\_20170605\_CS  
05 June 2017**

**Sheet  
Reference  
Number  
2 of 74**



LEGEND	
--- Federal Navigation Channel	● Cable Area
— Federal Navigation Center Line	■ Placement Area
— As-built Pipeline/Cable	□ Anchorage Area
..... Unconfirmed Pipeline/Cable	⊗ Obstruction Point
— Project Depth Contour	✶ Wrecks-Submerged
□ Borrow Area	★ Beacon, General
● Shoalest Sounding**	◆ Red Navigation Buoy
☆ Beacon, General	◆ Green Navigation Buoy
◆ Red Navigation Buoy	■ -6' and above
◆ Green Navigation Buoy	■ -6' to -8'
	■ -8' to -15'
	■ -15' to -20'
	■ -20' to -25'
	■ -25' to -30'
	■ -30' and below

**W** **N**  
**S** **E**

Gage Reading: BERWICK WEST: 3.47 MLG  
Sea Conditions: CALM  
Vessel Name: OB-189  
Survey Type: CONDITION  
Sounding Frequency\*\*\*: HIGH

Vertical Datum:  
Soundings are shown in feet and indicate depths below Mean Low Gulf Datum (MLG).  
The location of navigation aids are based on and provided by the U.S. Coast Guard.  
Reference is N.O.A. Navigation Chart No. 11350.  
\*\*\* Shoalest Sounding per Quarter per Reach.

Horizontal Coordinate System:  
North American Datum of 1983 (NAD83), projected to the State Plane Coordinate System (SPCS), Louisiana South Zone. Distance units in U.S. Survey Feet.

Vertical Datum:  
Soundings are shown in feet and indicate depths below Mean Low Gulf Datum (MLG).  
The location of navigation aids are based on and provided by the U.S. Coast Guard.  
Reference is N.O.A. Navigation Chart No. 11350.  
\*\*\* Shoalest Sounding per Quarter per Reach.

2015 Aerial Photography data source: NAIP, 1998 DOQQ imagery shown in green from USGS.

Reference is N.O.A. Navigation Chart No. 11350.

\*\*\* High frequency (200 kHz) survey data represents the first signal return at a sounding location and will include suspended solids, known as "fluff", if present. Low frequency (20 kHz) survey data normally penetrates through this "fluff" layer to depict elevations of consolidated bottom material. Low frequency accuracies may vary depending on channel conditions and fathometer settings.

**NOTES:**

Horizontal Coordinate System:  
North American Datum of 1983 (NAD83), projected to the State Plane Coordinate System (SPCS), Louisiana South Zone. Distance units in U.S. Survey Feet.

Vertical Datum:  
Soundings are shown in feet and indicate depths below Mean Low Gulf Datum (MLG).  
The location of navigation aids are based on and provided by the U.S. Coast Guard.  
Reference is N.O.A. Navigation Chart No. 11350.  
\*\*\* Shoalest Sounding per Quarter per Reach.

\*\*\* High frequency (200 kHz) survey data represents the first signal return at a sounding location and will include suspended solids, known as "fluff", if present. Low frequency (20 kHz) survey data normally penetrates through this "fluff" layer to depict elevations of consolidated bottom material. Low frequency accuracies may vary depending on channel conditions and fathometer settings.