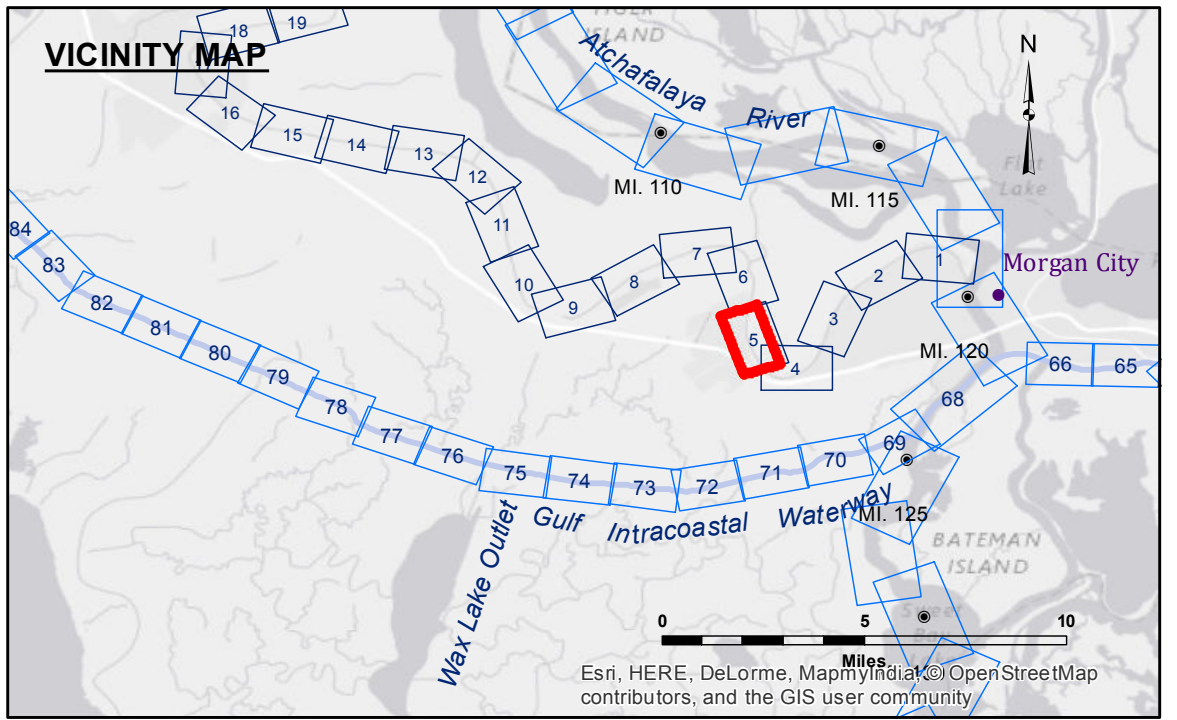


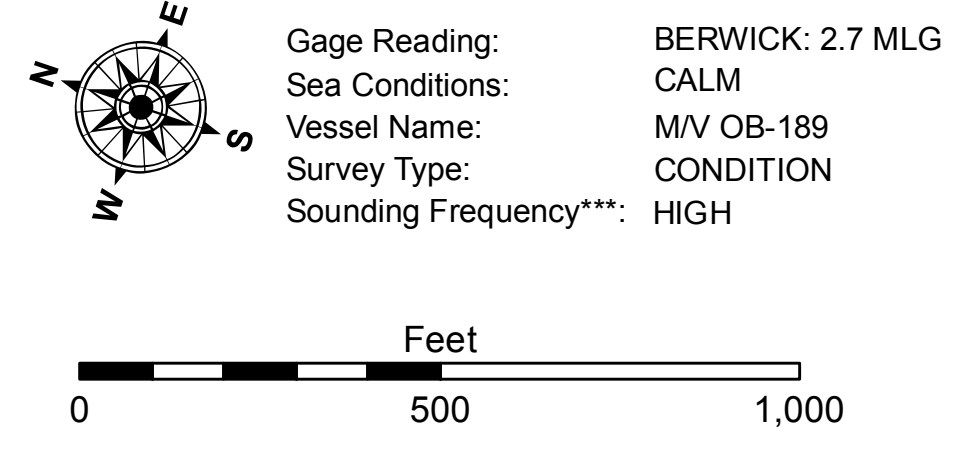
DISCLAIMER
 The information depicted on this map represents the results of a survey conducted by the U.S. Army Corps of Engineers and is not intended to be used for any purpose other than that for which it was prepared. The user is responsible for the accuracy, completeness, reliability, usability or suitability for any particular purpose of the information provided. The user is responsible for the accuracy, completeness, reliability, usability or suitability for any particular purpose of the information provided. The user is responsible for the accuracy, completeness, reliability, usability or suitability for any particular purpose of the information provided. The user is responsible for the accuracy, completeness, reliability, usability or suitability for any particular purpose of the information provided. The user is responsible for the accuracy, completeness, reliability, usability or suitability for any particular purpose of the information provided.

U.S. ARMY CORPS OF ENGINEERS NEW ORLEANS DISTRICT		
Submitted:	Surveyed By: JH,RC	Plotted By: AO
Recommended: Chief, Survey Section	Checked By: AO	Checked By: AO
Approved: Chief, Waterways Maintenance Section		

**BAYOU TECHE
 BERWICK TO WAX LAKE
 TC_05_B2W_20101020
 20 October 2010**



LEGEND			
--- Federal Navigation Channel	○ Cable Area	□ Borrow Area	-6' and above
— Federal Navigation Center Line	▭ Placement Area	● Shoalest Sounding**	-6' to -8'
— As-built Pipeline/Cable	⊗ Anchorage Area	☆ Beacon, General	-8' to -15'
..... Unconfirmed Pipeline/Cable	⊗ Obstruction Point	◆ Red Navigation Buoy	-15' to -20'
— Project Depth Contour	⚓ Wrecks-Submerged	◆ Green Navigation Buoy	-20' to -25'
			-25' to -30'
			-30' and below



NOTES:
 Horizontal Coordinate System:
 North American Datum of 1983 (NAD83), projected to the State Plane Coordinate System (SPCS), Louisiana South Zone. Distance units in U.S. Survey Feet.
 Vertical Datum:
 Soundings are shown in feet and indicate depths below Mean Low Gulf Datum (MLG).
 The location of navigation aids are base on and provided by the U.S. Coast Guard.
 2015 Aerial Photography data source: NAIP 1998 DOQQ imagery shown in green from USGS.
 Reference is N.O.A. Navigation Chart No. 11350.
 *** Shoalest Sounding per Quarter per Reach.
 **** High frequency (200 kHz) survey data represents the first signal return at a sounding location and will include suspended solids, known as "fluff", if present. Low frequency (20 kHz) survey data normally penetrates through this "fluff" layer to depict elevations of consolidated bottom material. Low frequency accuracies may vary depending on channel conditions and fathometer settings.

**Sheet
 Reference
 Number
 5 of 74**