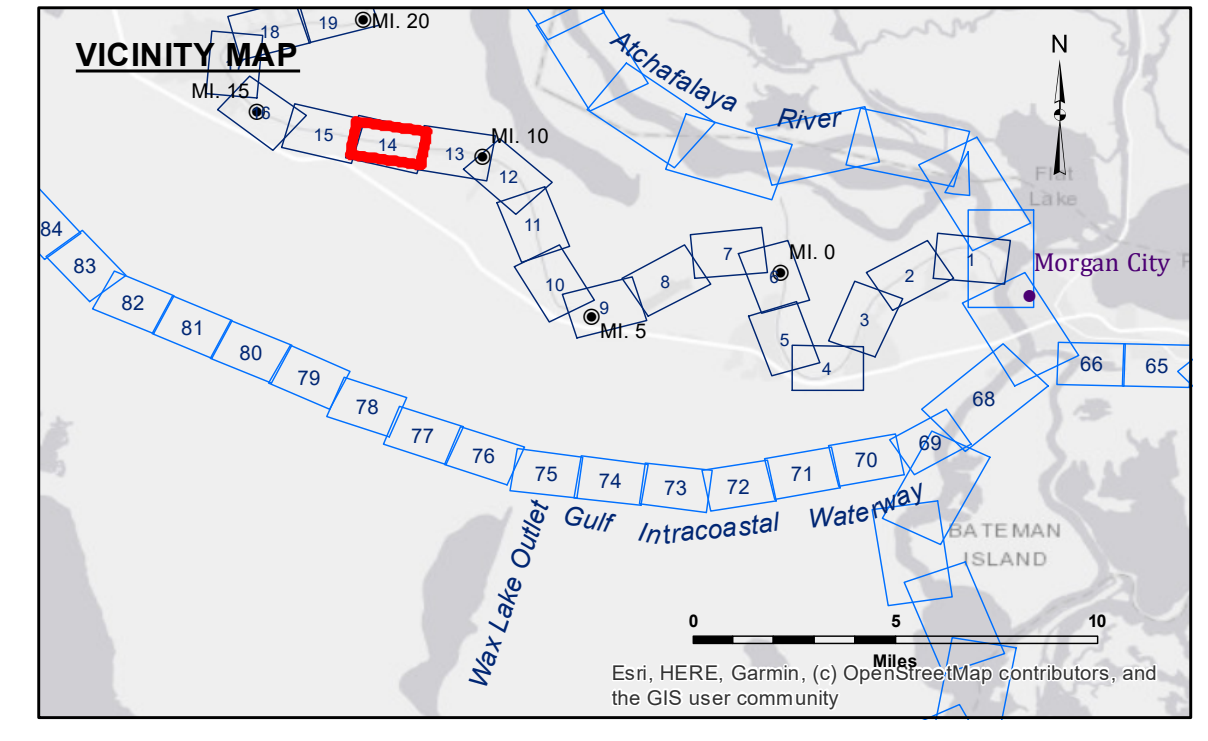


Access Constraints: The United States Government furnishes these data and the recipient accepts and uses them with the express understanding that the data are not to be used for any purpose other than that for which they were provided. The user is responsible for the results, reliability, usability or suitability for any particular purpose of the data. The user shall not be held liable for any damage or loss, under no liability whatsoever to any person by reason of any use made thereof. These data belong to the Government. Therefore the recipient may not transfer, disseminate, or otherwise use these data to others without also transferring this Disclaimer. The information depicted on this map represents the results of a survey conducted on the ground and is not to be considered to represent the general condition existing at that time.

Distribution Liability: The data represents the results of data collection processing for a specific US Army Corps of Engineers project. The data is only valid for its intended use, control, time and accuracy specifications. The user is responsible for the results, reliability, usability or suitability for any particular purpose of the data. The user shall not be held liable for any damage or loss, under no liability whatsoever to any person by reason of any use made thereof. These data belong to the Government. Therefore the recipient may not transfer, disseminate, or otherwise use these data to others without also transferring this Disclaimer. The information depicted on this map represents the results of a survey conducted on the ground and is not to be considered to represent the general condition existing at that time.

Data Constraints: Hydrographic survey data is subject to change rapidly due to several factors including but not limited to dredging, sedimentation, and other factors. The user is responsible for the results, reliability, usability or suitability for any particular purpose of the data. The user shall not be held liable for any damage or loss, under no liability whatsoever to any person by reason of any use made thereof. These data belong to the Government. Therefore the recipient may not transfer, disseminate, or otherwise use these data to others without also transferring this Disclaimer. The information depicted on this map represents the results of a survey conducted on the ground and is not to be considered to represent the general condition existing at that time.

U.S. ARMY CORPS OF ENGINEERS NEW ORLEANS DISTRICT	
Submitted:	Surveyed By: SP/PS
Recommended: Chief, Survey Section	Plotted By: BD
Approved: Chief, Waterways Maintenance Section	Checked By: AO/JH



LEGEND	
--- Federal Navigation Channel	○ Cable Area
— Federal Navigation Center Line	□ Placement Area
— As-built Pipeline/Cable	□ Anchorage Area
..... Unconfirmed Pipeline/Cable	⊗ Obstruction Point
— Project Depth Contour	✶ Wrecks-Submerged
□ Borrow Area	★ Beacon, General
● Shoalest Sounding**	◆ Red Navigation Buoy
☆ Beacon, General	◆ Green Navigation Buoy
◆ Red Navigation Buoy	■ -6' and above
◆ Green Navigation Buoy	■ -6' to -8'
	■ -8' to -15'
	■ -15' to -20'
	■ -20' to -25'
	■ -25' to -30'
	■ -30' and below

Gage Reading: VRS RTK NTRIP: 2.43 MLG AVG.
Sea Conditions: CALM
Vessel Name: OB-169
Survey Type: CONDITION
Sounding Frequency*:** HIGH

NOTES:

Horizontal Coordinate System:
North American Datum of 1983 (NAD83), projected to the State Plane Coordinate System (SPCS), Louisiana South Zone. Distance units in U.S. Survey Feet.

Vertical Datum:
Soundings are shown in feet and indicate depths below Mean Low Gulf Datum (MLG).

The location of navigation aids are base on and provided by the U.S. Coast Guard.

2019 Aerial Photography data source: NAIP. 1998 DOQQ imagery shown in green from USGS.

Reference is N.O.A. Navigation Chart No. 11350.

** Shoalest Sounding per Quarter per Reach.

*** High frequency (200 kHz) survey data represents the first signal return at a sounding location and will include suspended solids, known as "fluff", if present. Low frequency (20 kHz) survey data normally penetrates through this "fluff" layer to depict elevations of consolidated bottom material. Low frequency accuracies may vary depending on channel conditions and fathometer settings.

**BAYOU TECHE
WAX LAKE TO CHARENTON
TC_14_W2C_20221219_CS
19 December 2022**

**Sheet
Reference
Number
14 of 74**

Revision Number:
4.2-20220420