

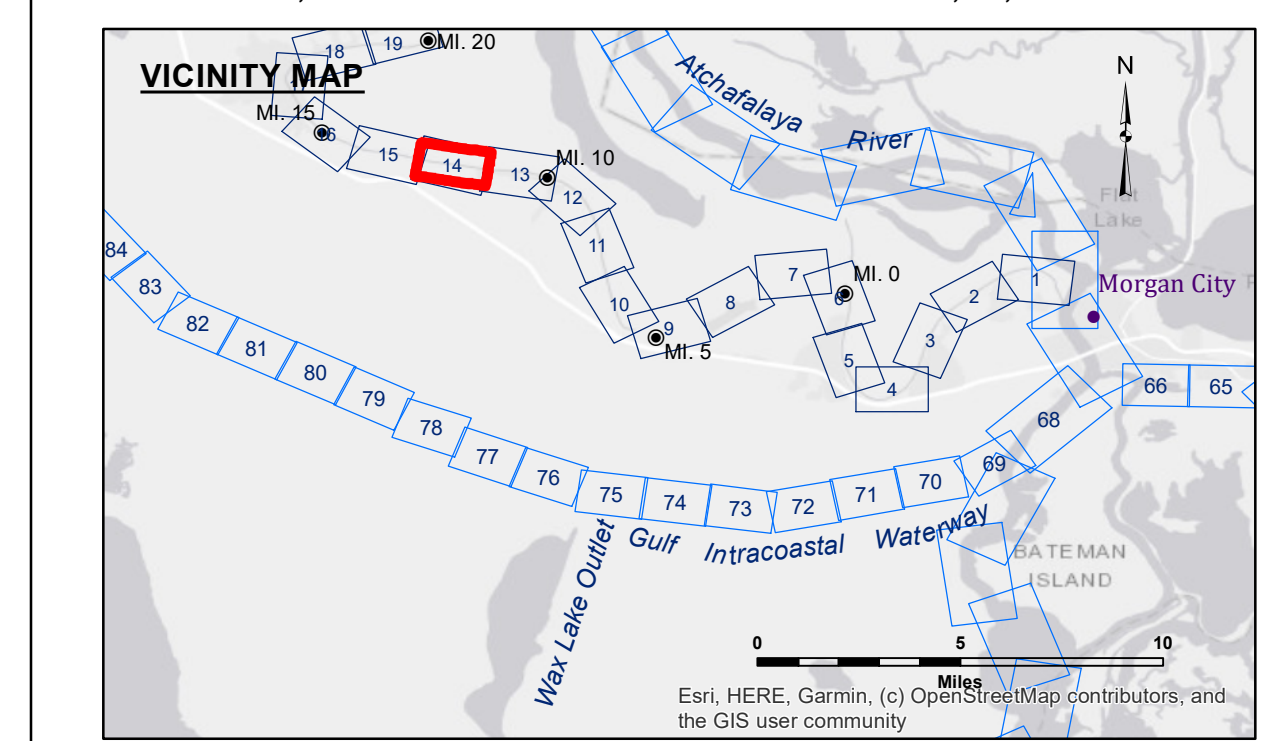


Access Considerations: The United States Government sometimes uses these data and the recipient accepts and uses them with the express understanding that the United States Government does not warrant, express or implied, concerning the accuracy, completeness, reliability, usability or suitability for any particular purpose of the information. The user is responsible for the use of the information under no liability whatsoever to any person by reason of any use made thereof. These data belong to the Government. Therefore, the recipient may not transfer, disseminate, or otherwise use these data to others without also transferring the Disclaimers. The information depicted on this map represents the results of a survey conducted on the date of the survey. It is not considered to represent the general condition existing at that time.

Distribution Liability: The data represents the results of data collection/processing for a specific US Army Corps of Engineers project. It is only valid for its intended use, content, time and accuracy specifications. The user is responsible for the use of the information for any purpose other than that for which it was intended.

Data Considerations: Hydrographic survey data is subject to change rapidly due to several factors including, but not limited to, changing bathymetry, sedimentation, and changes in channel conditions. The Army Corps of Engineers accepts no responsibility for changes in the hydrographical conditions which develop after the date of the survey. Prudent users should not rely solely upon this information.

U.S. ARMY CORPS OF ENGINEERS NEW ORLEANS DISTRICT		
Submitted:	Surveyed By: SP/SR	Checked By: AO/JH
Recommended: Chief, Survey Section	Plotted By: BD	
Approved: Chief, Waterways Maintenance Section		



LEGEND

--- Federal Navigation Channel	○ Cable Area	□ Borrow Area	■ -6' and above
— Federal Navigation Center Line	□ Placement Area	● Shoalest Sounding**	■ -6' to -8'
— As-built Pipeline/Cable	□ Anchorage Area	★ Beacon, General	■ -8' to -15'
..... Unconfirmed Pipeline/Cable	⊗ Obstruction Point	♦ Red Navigation Buoy	■ -15' to -20'
— Project Depth Contour	⚓ Wrecks-Submerged	◇ Green Navigation Buoy	■ -20' to -25'
			■ -25' to -30'
			■ -30' and below

NOTES:

Horizontal Coordinate System:
North American Datum of 1983 (NAD83), projected to the State Plane Coordinate System (SPCS), Louisiana South Zone. Distance units in U.S. Survey Feet.

Vertical Datum:
Soundings are shown in feet and indicate depths below Mean Low Gulf Datum (MLG).

The location of navigation aids are base on and provided by the U.S. Coast Guard.

2019 Aerial Photography data source: NAIP. 1998 DOQQ imagery shown in green from USGS.

Reference is N.O.A.A. Navigation Chart No. 11350.

** Shoalest Sounding per Quarter per Reach.

*** High frequency (200 kHz) survey data represents the first signal return at a sounding location and will include suspended solids, known as "fluff", if present. Low frequency (20 kHz) survey data normally penetrates through this "fluff" layer to depict elevations of consolidated bottom material. Low frequency accuracies may vary depending on channel conditions and fathometer settings.

Gage Reading:	VRS RTK NTRIP: 3.67 MLG AVG.
Sea Conditions:	CALM
Vessel Name:	OB-169
Survey Type:	CONDITION
Sounding Frequency***:	HIGH

**BAYOU TECHE
WAX LAKE TO CHARENTON
TC_14_W2C_20230104_CS
04 January 2023**

**Sheet
Reference
Number
14 of 74**

Revision Number:
4.2-20200420