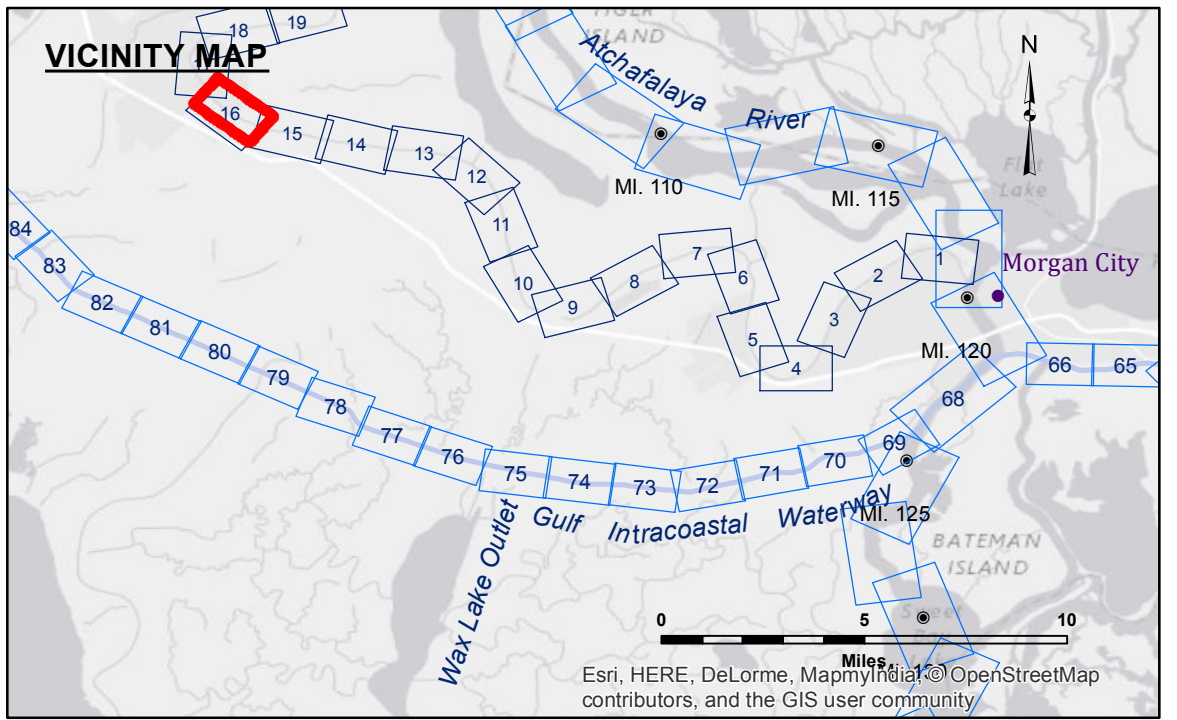


**Access/Use:** The United States Government furnishes these data and the recipient accepts and uses them with the express understanding that they are not to be used for any purpose other than that for which they were prepared, or for any purpose for which they were not intended. The user is responsible for the accuracy, completeness, readability, usability or suitability, for any particular purpose of the data. The user shall not be held liable for any damage or loss, under no liability whatsoever to any person by reason of any use made hereof. These data belong to the Government. Therefore, the recipient may not transfer, disseminate, or otherwise use these data to others without the prior written approval of the Army Corps of Engineers. The recipient may not transfer, disseminate, or otherwise use these data to others without the prior written approval of the Army Corps of Engineers. The recipient may not transfer, disseminate, or otherwise use these data to others without the prior written approval of the Army Corps of Engineers. The recipient may not transfer, disseminate, or otherwise use these data to others without the prior written approval of the Army Corps of Engineers. The recipient may not transfer, disseminate, or otherwise use these data to others without the prior written approval of the Army Corps of Engineers.

U.S. ARMY CORPS OF ENGINEERS NEW ORLEANS DISTRICT	
Submitted:	Surveyed By: JH,RC
Recommended: Chief, Survey Section	Plotted By: AO
Approved: Chief, Waterways Maintenance Section	Checked By: AO

**BAYOU TECHE  
WAX LAKE TO CHARENTON  
TC\_16\_W2C\_20101101  
01 November 2010**



LEGEND	
--- Federal Navigation Channel	○ Cable Area
— Federal Navigation Center Line	□ Placement Area
— As-built Pipeline/Cable	□ Anchorage Area
..... Unconfirmed Pipeline/Cable	⊗ Obstruction Point
— Project Depth Contour	✶ Wrecks-Submerged
□ Borrow Area	★ Beacon, General
● Shoalest Sounding**	◆ Red Navigation Buoy
★ Beacon, General	◆ Green Navigation Buoy
◆ Red Navigation Buoy	■ -6' and above
◆ Green Navigation Buoy	■ -6' to -8'
	■ -8' to -15'
	■ -15' to -20'
	■ -20' to -25'
	■ -25' to -30'
	■ -30' and below

**Gage Reading:** CALUMET W: 2.8 MLG  
**Sea Conditions:** CALM  
**Vessel Name:** MV OB-189  
**Survey Type:** CONDITION  
**Sounding Frequency\*\*\*:** HIGH

**NOTES:**  
 Horizontal Coordinate System:  
 North American Datum of 1983 (NAD83), projected to the State Plane Coordinate System (SPCS), Louisiana South Zone. Distance units in U.S. Survey Feet.  
 Vertical Datum:  
 Soundings are shown in feet and indicate depths below Mean Low Gulf Datum (MLG).  
 The location of navigation aids are base on and provided by the U.S. Coast Guard.  
 2015 Aerial Photography data source: NAIP, 1998 DOQQ imagery shown in green from USGS.  
 Reference is N.O.A. Navigation Chart No. 11350.  
 \*\*\* Shoalest Sounding per Quarter per Reach.  
 \*\*\* High frequency (200 kHz) survey data represents the first signal return at a sounding location and will include suspended solids, known as "fluff", if present. Low frequency (20 kHz) survey data normally penetrates through this "fluff" layer to depict elevations of consolidated bottom material. Low frequency accuracies may vary depending on channel conditions and fathometer settings.