

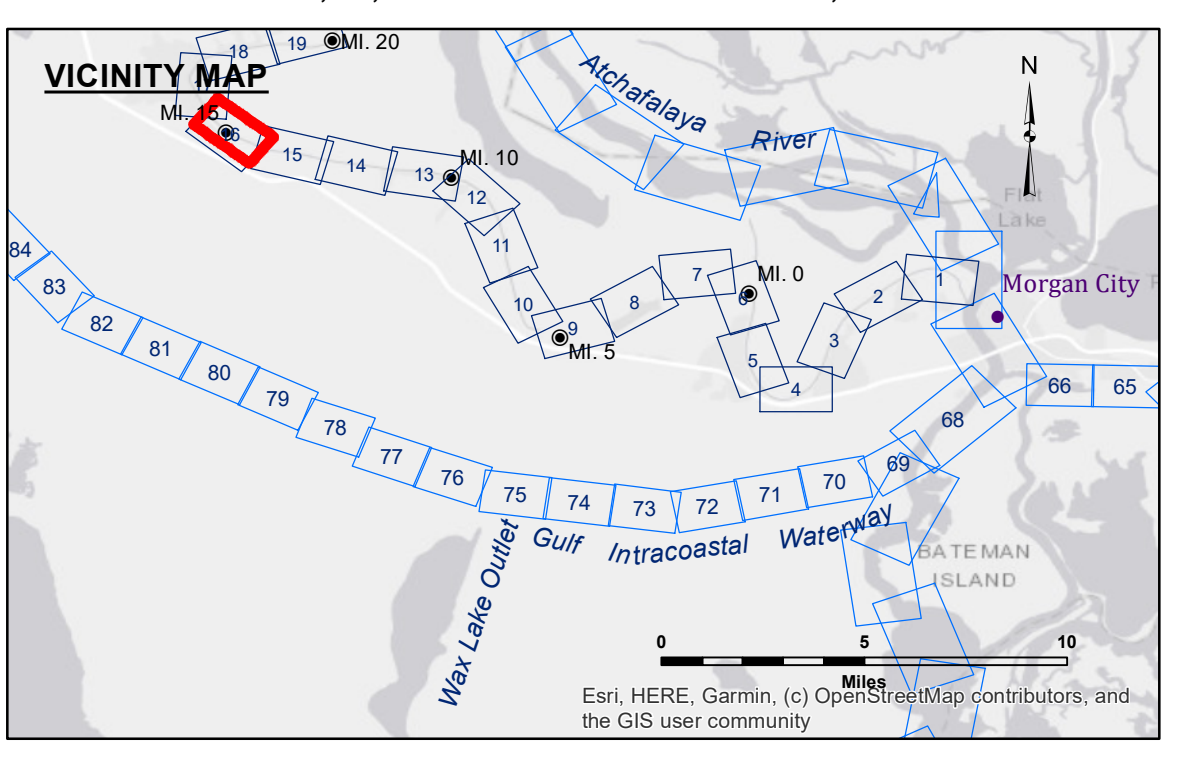
Access Considerations: The United States Government furnishes these data and the recipient accepts and uses them with the express understanding that they are not to be used for any purpose other than that for which they were prepared, and that the user is responsible for the results of any use of the data. The user is responsible for the results of any use of the data. The user is responsible for the results of any use of the data. The user is responsible for the results of any use of the data.

Liability: The data represents the results of data collection/processing for a specific US Army Corps of Engineers project. It is only valid for its intended use, content, time and accuracy specifications. The user is responsible for the results of any use of the data. The user is responsible for the results of any use of the data. The user is responsible for the results of any use of the data.

Data Considerations: Hydrographic survey data is subject to change rapidly due to several factors including, but not limited to, changing hydrographic conditions, changes in bathymetry, and changes in the hydrographic conditions which develop after the date of the survey. The user is responsible for the results of any use of the data. The user is responsible for the results of any use of the data. The user is responsible for the results of any use of the data.

U.S. ARMY CORPS OF ENGINEERS NEW ORLEANS DISTRICT	
Submitted:	Surveyed By: SPSR
Recommended: Chief, Survey Section	Plotted By: BD
Approved: Chief, Waterways Maintenance Section	Checked By: AO/JH

**BAYOU TECHE
WAX LAKE TO CHARENTON
TC_16_W2C_20230104_CS
04 January 2023**



LEGEND	
--- Federal Navigation Channel	○ Cable Area
— Federal Navigation Center Line	□ Placement Area
— As-built Pipeline/Cable	□ Borrow Area
..... Unconfirmed Pipeline/Cable	● Shoalest Sounding**
— Project Depth Contour	⊗ Obstruction Point
	★ Beacon, General
	◆ Red Navigation Buoy
	◆ Green Navigation Buoy
	◆ Wrecks-Submerged
	■ -6' and above
	■ -6' to -8'
	■ -8' to -15'
	■ -15' to -20'
	■ -20' to -25'
	■ -25' to -30'
	■ -30' and below

NOTES:

Horizontal Coordinate System:
North American Datum of 1983 (NAD83), projected to the State Plane Coordinate System (SPCS), Louisiana South Zone. Distance units in U.S. Survey Feet.

Vertical Datum:
Soundings are shown in feet and indicate depths below Mean Low Gulf Datum (MLG).

The location of navigation aids are based on and provided by the U.S. Coast Guard.

Reference is N.O.A. Navigation Chart No. 11350.

** Shoalest Sounding per Quarter per Reach.

*** High frequency (200 kHz) survey data represents the first signal return at a sounding location and will include suspended solids, known as "fluff", if present. Low frequency (20 kHz) survey data normally penetrates through this "fluff" layer to depict elevations of consolidated bottom material. Low frequency accuracies may vary depending on channel conditions and fathometer settings.

Gage Reading: VRS RTK NTRIP: 3.67 MLG AVG.
Sea Conditions: CALM
Vessel Name: OB-169
Survey Type: CONDITION
Sounding Frequency***: HIGH