

**Access Constraints:** The United States Government furnishes these data and the recipient accepts and uses them with the express understanding that the data are not to be used for any purpose other than that for which they were provided, and that the user is responsible for the results of any use of the data. The user is responsible for the results of any use of the data. The user is responsible for the results of any use of the data. The user is responsible for the results of any use of the data.

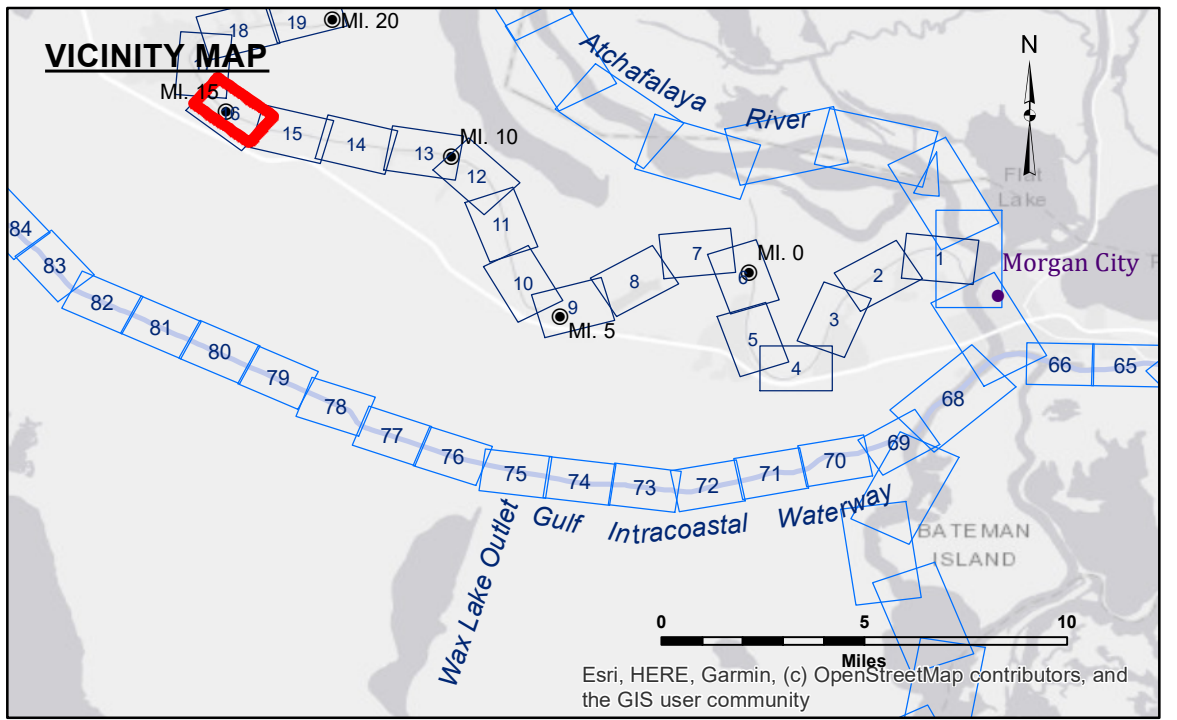
**Disclaimer:** The data represents the results of data collection/processing for a specific US Army Corps of Engineers project. It is only valid for its intended use, control, time and accuracy specifications. The user is responsible for the results of any use of the data. The user is responsible for the results of any use of the data. The user is responsible for the results of any use of the data.

**Data Constraints:** Hydrographic survey data is subject to change rapidly due to several factors including, but not limited to, dredging, sedimentation, and changes in bathymetry. The user is responsible for the results of any use of the data. The user is responsible for the results of any use of the data. The user is responsible for the results of any use of the data.

**Information:** The information depicted on this map represents the results of a survey conducted on the ground. The information is not to be used for any purpose other than that for which it was provided. The user is responsible for the results of any use of the data. The user is responsible for the results of any use of the data. The user is responsible for the results of any use of the data.

U.S. ARMY CORPS OF ENGINEERS NEW ORLEANS DISTRICT		
Submitted:	Surveyed By:	SP-JS
Recommended:	Plotted By:	JH
Approved:	Checked By:	AC
Chief, Waterways Maintenance Section		

**BAYOU TECHE  
WAX LAKE TO CHARENTON  
TC\_16\_W2C\_20240501\_CS\_1X1  
01 May 2024**



LEGEND	
--- Federal Navigation Channel	○ Cable Area
— Federal Navigation Center Line	□ Placement Area
— As-built Pipeline/Cable	□ Anchorage Area
..... Unconfirmed Pipeline/Cable	⊗ Obstruction Point
— Project Depth Contour	⚓ Wrecks-Submerged
□ Borrow Area	★ Beacon, General
● Shoalest Sounding**	◆ Red Navigation Buoy
○ -6' and above	◆ Green Navigation Buoy
○ -6' to -8'	
○ -8' to -15'	
○ -15' to -20'	
○ -20' to -25'	
○ -25' to -30'	
○ -30' and below	

**NOTES:**

Horizontal Coordinate System:  
North American Datum of 1983 (NAD83), projected to the State Plane Coordinate System (SPCS), Louisiana South Zone. Distance units in U.S. Survey Feet.

Vertical Datum:  
Soundings are shown in feet and indicate depths below Mean Low Gulf Datum (MLG).

The location of navigation aids are base on and provided by the U.S. Coast Guard.

2019 Aerial Photography data source: NAIP. 1998 DOQQ imagery shown in green from USGS.

Reference is N.O.A. Navigation Chart No. 11350.

\*\* Shoalest Sounding per Quarter per Reach.

\*\*\* High frequency (200 kHz) survey data represents the first signal return at a sounding location and will include suspended solids, known as "fluff", if present. Low frequency (20 kHz) survey data normally penetrates through this "fluff" layer to depict elevations of consolidated bottom material. Low frequency accuracies may vary depending on channel conditions and fathometer settings.

Gage Reading: RTN: 2.7 MLG  
Sea Conditions: CALM  
Vessel Name: OB-169  
Survey Type: CONDITION  
Sounding Frequency\*\*\*: 400KHZ

0 500 1,000 Feet