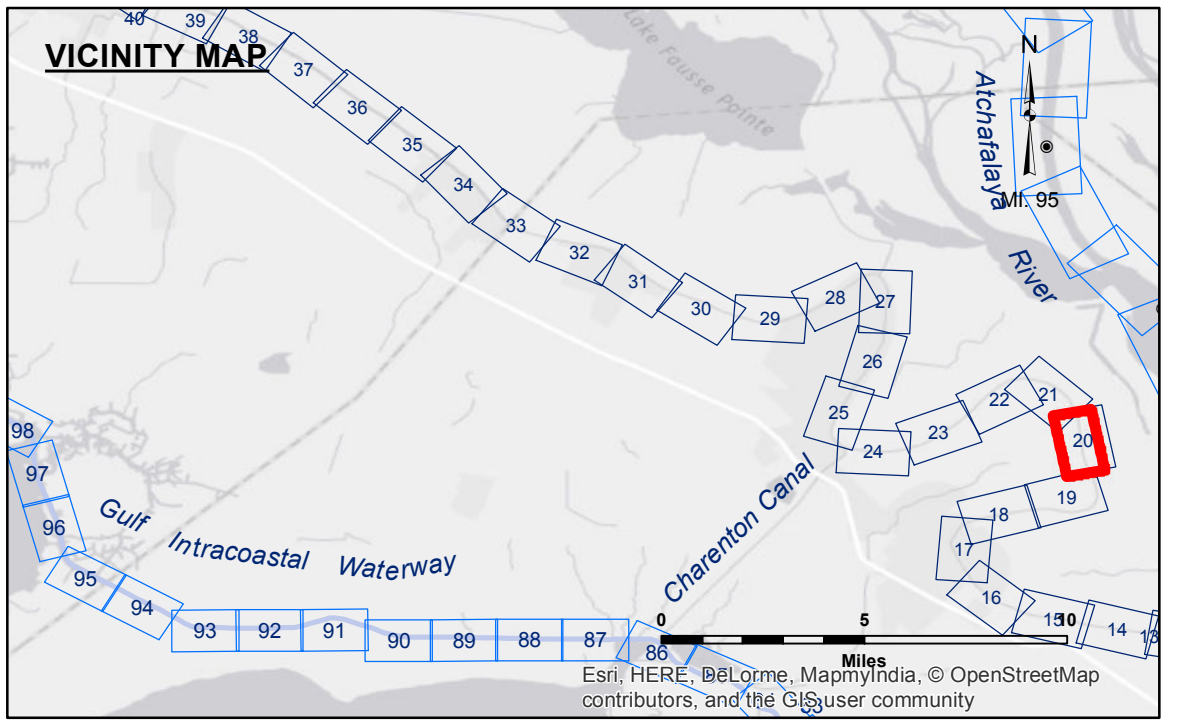


**Access/Use:** The United States Government furnishes these data and the recipient accepts and uses them with the express understanding that they are for official use only and are not to be used for any other purpose. The user is responsible for the accuracy, completeness, readability, usability or suitability for any particular purpose of the information. The recipient may not transfer these data to others without also transferring this Disclaimer.

**Distribution Liability:** The data represents the results of data collection/processing for a specific US Army Corps of Engineers project. It is only valid for its intended use, control, time and accuracy specifications. The user is responsible for the results. The user is responsible for the accuracy, completeness, readability, usability or suitability for any particular purpose of the information. The recipient may not transfer these data to others without also transferring this Disclaimer.

**Data:** Constant Hydrographic survey data is subject to change rapidly due to several factors including but not limited to: changing bathymetry, sedimentation, and other factors. The US Army Corps of Engineers accepts no responsibility for changes in the hydrographic conditions when developed after the date of the survey. Product maintainers should not rely solely upon this internal use. Product maintainers should not rely solely upon this internal use.

U.S. ARMY CORPS OF ENGINEERS NEW ORLEANS DISTRICT	
Submitted:	Surveyed By: JH,RC
Recommended: Chief Survey Station	Plotted By: AO
Approved: Chief Waterways Maintenance Section	Checked By: AO



**LEGEND**

--- Federal Navigation Channel	○ Cable Area	□ Borrow Area	■ -6' and above
— Federal Navigation Center Line	□ Placement Area	● Shoalest Sounding**	■ -6' to -8'
— As-built Pipeline/Cable	□ Anchorage Area	★ Beacon, General	■ -8' to -15'
..... Unconfirmed Pipeline/Cable	⊗ Obstruction Point	◆ Red Navigation Buoy	■ -15' to -20'
— Project Depth Contour	✶ Wrecks-Submerged	◆ Green Navigation Buoy	■ -20' to -25'
			■ -25' to -30'
			■ -30' and below

Gage Reading: CALUMET W: 2.8 MLG  
 Sea Conditions: CALM  
 Vessel Name: M/V OB-189  
 Survey Type: CONDITION  
 Sounding Frequency\*\*\*: HIGH

**NOTES:**

Horizontal Coordinate System: North American Datum of 1983 (NAD83), projected to the State Plane Coordinate System (SPCS), Louisiana South Zone. Distance units in U.S. Survey Feet.

Vertical Datum: Soundings are shown in feet and indicate depths below Mean Low Gulf Datum (MLG).

The location of navigation aids are based on and provided by the U.S. Coast Guard.

2015 Aerial Photography data source: NAIP: 1998 DOQQ imagery shown in green from USGS.

Reference is N.O.A.A. Navigation Chart No. 11350.

\*\*\* Shoalest Sounding per Quarter per Reach.

\*\*\* High frequency (200 kHz) survey data represents the first signal return at a sounding location and will include suspended solids, known as "fluff", if present. Low frequency (20 kHz) survey data normally penetrates through this "fluff" layer to depict elevations of consolidated bottom material. Low frequency accuracies may vary depending on channel conditions and fathometer settings.

**BAYOU TECHE  
 WAX LAKE TO CHARENTON  
 TC\_20\_W2C\_20101101  
 01 November 2010**

**Sheet  
 Reference  
 Number  
 20 of 74**