

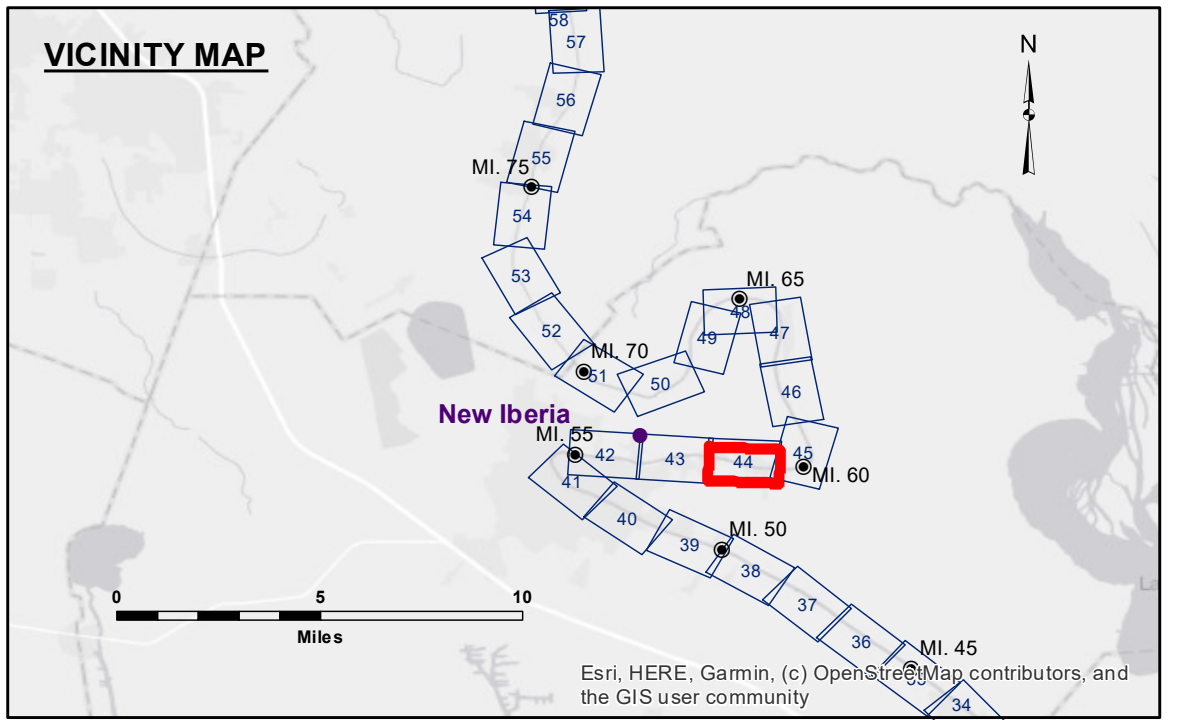


**DISCLAIMER**  
The United States Government furnishes these data and the recipient accepts and uses them with the express understanding that the data are not to be used for any purpose other than that for which they were originally collected, and that the data are not to be used for any purpose other than that for which they were originally collected, and that the data are not to be used for any purpose other than that for which they were originally collected.

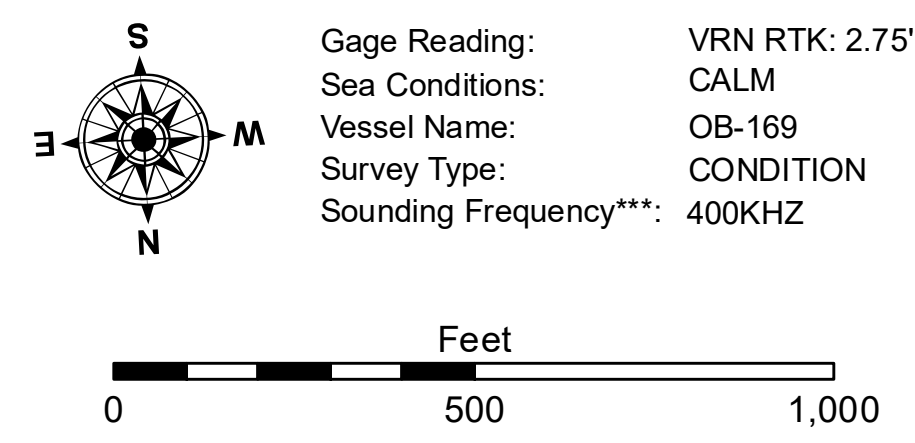
Submitted:	SP-US
Recommended:	JH
Approved:	JH

**BAYOU TEUCHE  
NEW IBERIA TO KEYSTONE LOCK  
TC\_44\_I2K\_20240228\_CS\_1X1  
28 February 2024**

**Sheet  
Reference  
Number  
44 of 74**



LEGEND			
--- Federal Navigation Channel	○ Cable Area	□ Borrow Area	■ -6' and above
— Federal Navigation Center Line	□ Placement Area	● Shoalest Sounding**	■ -6' to -8'
— As-built Pipeline/Cable	□ Anchorage Area	★ Beacon, General	■ -8' to -15'
..... Unconfirmed Pipeline/Cable	⊗ Obstruction Point	◆ Red Navigation Buoy	■ -15' to -20'
— Project Depth Contour	⚓ Wrecks-Submerged	◆ Green Navigation Buoy	■ -20' to -25'
			■ -25' to -30'
			■ -30' and below



**NOTES:**  
Horizontal Coordinate System: North American Datum of 1983 (NAD83), projected to the State Plane Coordinate System (SPCS), Louisiana South Zone. Distance units in U.S. Survey Feet.  
Vertical Datum: Soundings are shown in feet and indicate depths below Mean Low Gulf Datum (MLG).  
The location of navigation aids are based on and provided by the U.S. Coast Guard.  
2019 Aerial Photography data source: NAIP. 1998 DOQQ imagery shown in green from USGS.  
Reference is N.O.A.A. Navigation Chart No. 11350.  
\*\* Shoalest Sounding per Quarter per Reach.  
\*\*\* High frequency (200 kHz) survey data represents the first signal return at a sounding location and will include suspended solids, known as "fluff", if present. Low frequency (20 kHz) survey data normally penetrates through this "fluff" layer to depict elevations of consolidated bottom material. Low frequency accuracies may vary depending on channel conditions and fathometer settings.