



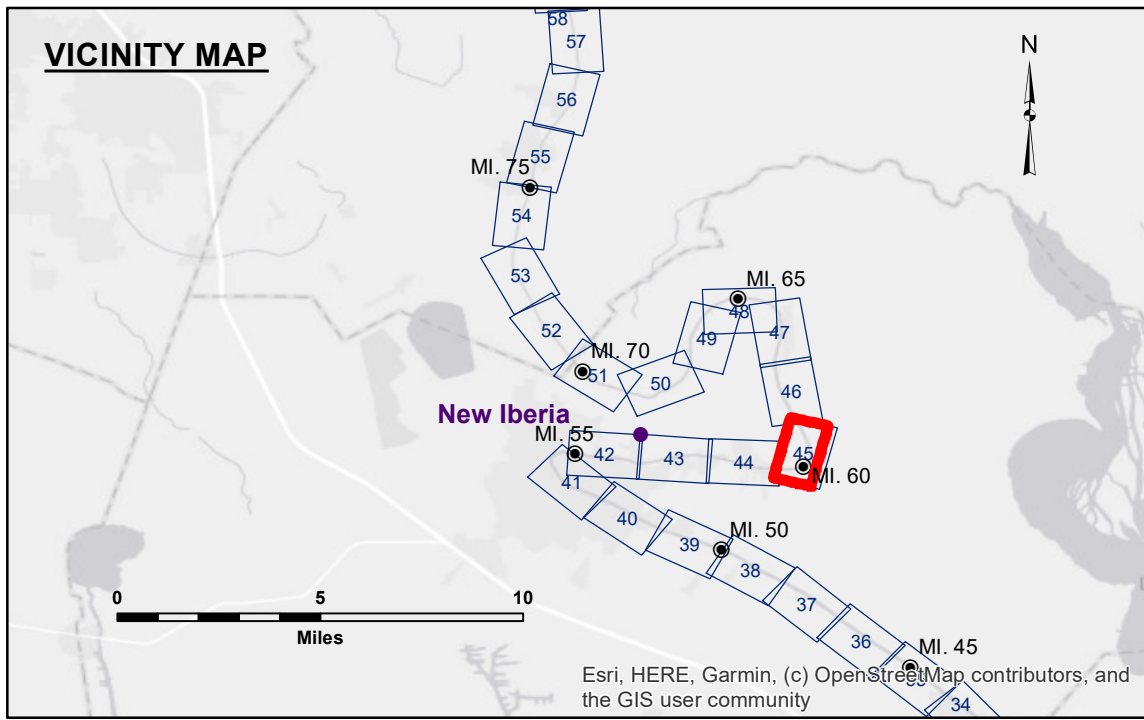
Access Constraints: The United States Government furnishes these data and the recipient accepts and uses them with the express understanding that the data are not to be used for any purpose other than that for which they were originally collected, and that the user is responsible for the results of any use of the data for any other purpose.

Distribution Liability: The data represents the results of data collection/processing for a specific US Army Corps of Engineers project. It is only valid for its intended use, content, time and accuracy specifications. The user is responsible for the results of any use of the data for any other purpose.

Data Constraints: Hydrographic survey data is subject to change due to several factors including but not limited to changing hydrographic conditions which develop after the date of the survey. The US Army Corps of Engineers accepts no responsibility for changes in the hydrographic conditions which develop after the date of the survey. Product users should not rely solely upon this information.

U.S. ARMY CORPS OF ENGINEERS NEW ORLEANS DISTRICT	
Submitted:	Surveyed By: SP-JS
Recommended: Chief Survey Section	Plotted By: JH
Approved: Chief Waterways Maintenance Section	Checked By: JH

BAYOU TECHE
NEW IBERIA TO KEYSTONE LOCK
TC_45_I2K_20240228_CS_1X1
28 February 2024



LEGEND	
--- Federal Navigation Channel	○ Cable Area
— Federal Navigation Center Line	□ Placement Area
— As-built Pipeline/Cable	□ Anchorage Area
..... Unconfirmed Pipeline/Cable	⊗ Obstruction Point
— Project Depth Contour	✈ Wrecks-Submerged
□ Borrow Area	★ Beacon, General
● Shoalest Sounding**	◆ Red Navigation Buoy
○ Green Navigation Buoy	

NOTES:

Horizontal Coordinate System:
North American Datum of 1983 (NAD83), projected to the State Plane Coordinate System (SPCS), Louisiana South Zone. Distance units in U.S. Survey Feet.

Vertical Datum:
Soundings are shown in feet and indicate depths below Mean Low Gulf Datum (MLG).

The location of navigation aids are base on and provided by the U.S. Coast Guard.

2019 Aerial Photography data source: NAIP. 1998 DOQQ imagery shown in green from USGS.

Reference is N.O.A. Navigation Chart No. 11350.

** Shoalest Sounding per Quarter per Reach.

*** High frequency (200 kHz) survey data represents the first signal return at a sounding location and will include suspended solids, known as "fluff", if present. Low frequency (20 kHz) survey data normally penetrates through this "fluff" layer to depict elevations of consolidated bottom material. Low frequency accuracies may vary depending on channel conditions and fathometer settings.

Gage Reading: VRN RTK: 2.75' MLG AVG
Sea Conditions: CALM
Vessel Name: OB-169
Survey Type: CONDITION
Sounding Frequency***: 400KHZ

Feet
0 500 1,000