



3,151,000

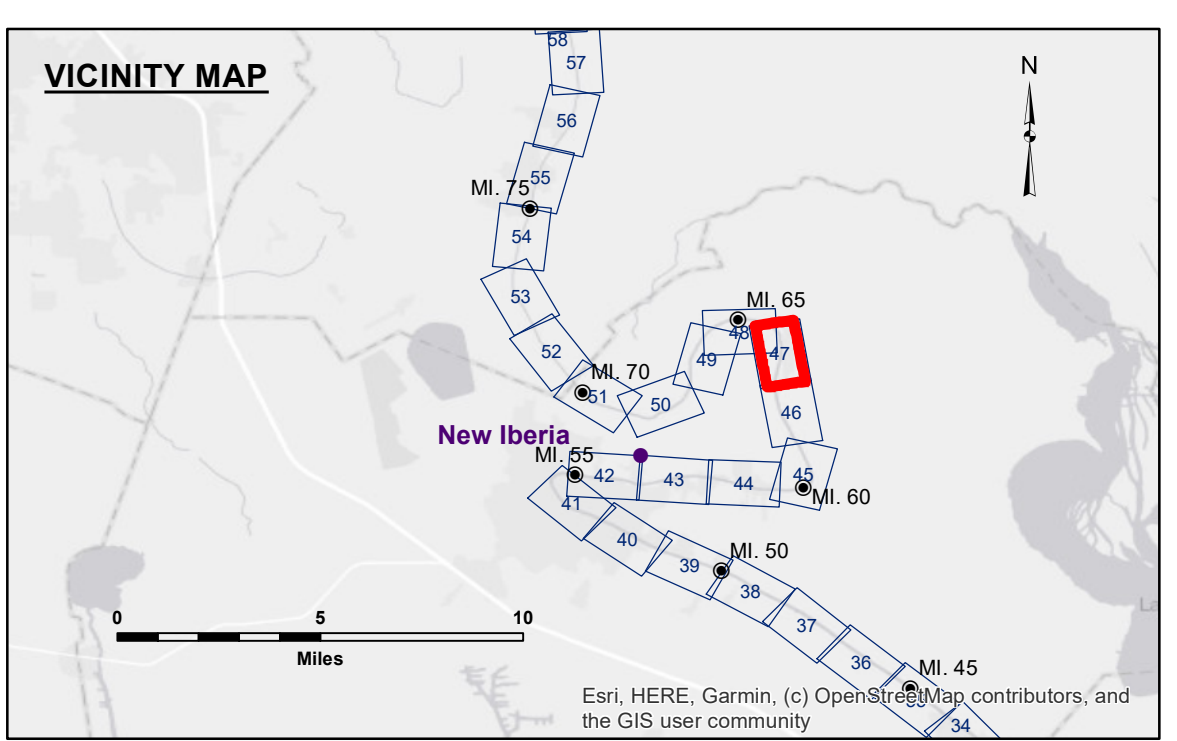
3,154,000

569,000

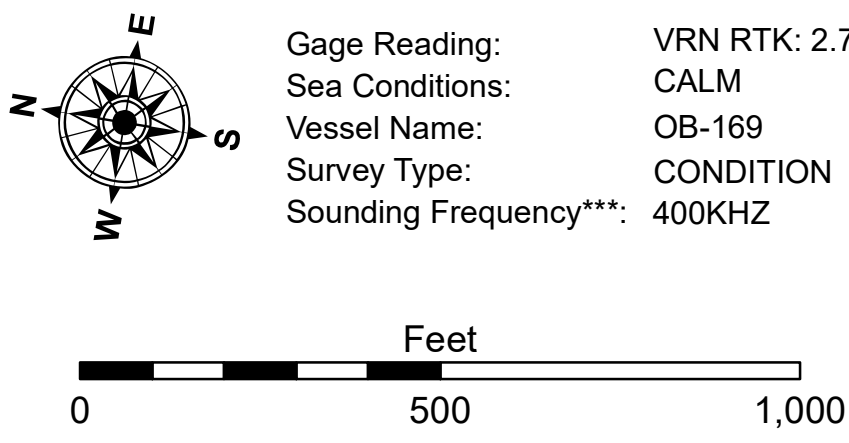
566,000

3,154,000

3,151,000



LEGEND			
--- Federal Navigation Channel	○ Cable Area	□ Borrow Area	■ -6' and above
— Federal Navigation Center Line	□ Placement Area	● Shoalest Sounding**	■ -6' to -8'
— As-built Pipeline/Cable	□ Anchorage Area	★ Beacon, General	■ -8' to -15'
..... Unconfirmed Pipeline/Cable	⊗ Obstruction Point	◆ Red Navigation Buoy	■ -15' to -20'
— Project Depth Contour	⚓ Wrecks-Submerged	◆ Green Navigation Buoy	■ -20' to -25'
			■ -25' to -30'
			■ -30' and below



NOTES:
 Horizontal Coordinate System:
 North American Datum of 1983 (NAD83), projected to the State Plane Coordinate System (SPCS), Louisiana South Zone. Distance units in U.S. Survey Feet.
 Vertical Datum:
 Soundings are shown in feet and indicate depths below Mean Low Gulf Datum (MLG).
 The location of navigation aids are base on and provided by the U.S. Coast Guard.
 2019 Aerial Photography data source: NAIP. 1998 DOQQ imagery shown in green from USGS.
 Reference is N.O.A. Navigation Chart No. 11350.
 ** Shoalest Sounding per Quarter per Reach.
 *** High frequency (200 kHz) survey data represents the first signal return at a sounding location and will include suspended solids, known as "fluff", if present. Low frequency (20 kHz) survey data normally penetrates through this "fluff" layer to depict elevations of consolidated bottom material. Low frequency accuracies may vary depending on channel conditions and fathometer settings.



DISCLAIMER: The information depicted on this map represents the results of a survey conducted for the purpose of determining the general condition existing at that time. The information is not intended to be used for any purpose other than that for which it was collected. The user is responsible for the results of any use of this information. The user is advised that this information is not intended to be used for any purpose other than that for which it was collected. The user is responsible for the results of any use of this information. The user is advised that this information is not intended to be used for any purpose other than that for which it was collected. The user is responsible for the results of any use of this information.

U.S. ARMY CORPS OF ENGINEERS NEW ORLEANS DISTRICT		
Submitted:	Surveyed By: SP-JS	Plotted By: JH
Recommended:	Chief, Survey Section	Checked By: JH
Approved:	Chief, Waterways Maintenance Section	

**BAYOU TECHE
 NEW IBERIA TO KEYSTONE LOCK
 TC_47_I2K_20240227_CS_1X1
 27 February 2024**

**Sheet
 Reference
 Number
 47 of 74**

Revision Number:
4.2-20240429