

578,000  
3,121,000  
578,000

578,000 3,124,000

575,000

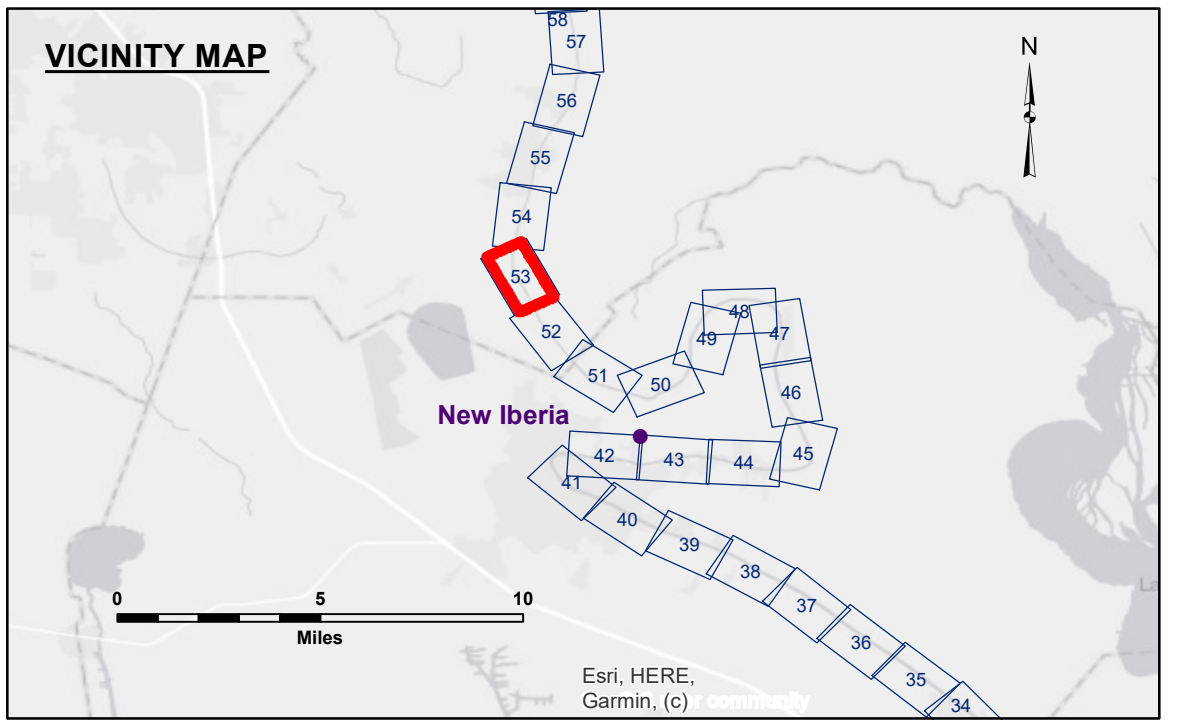
572,000

3,124,000

575,000

3,121,000

572,000



LEGEND			
--- Federal Navigation Channel	○ Cable Area	□ Borrow Area	■ -6' and above
— Federal Navigation Center Line	■ Placement Area	● Shoalest Sounding**	■ -6' to -8'
— As-built Pipeline/Cable	□ Anchorage Area	★ Beacon, General	■ -8' to -15'
..... Unconfirmed Pipeline/Cable	⊗ Obstruction Point	◆ Red Navigation Buoy	■ -15' to -20'
— Project Depth Contour	⚓ Wrecks-Submerged	◆ Green Navigation Buoy	■ -20' to -25'
			■ -25' to -30'
			■ -30' and below

Gage Reading: VRN RTK: 3.75 MLG AVG  
 Sea Conditions: CALM  
 Vessel Name: OB-169  
 Survey Type: CONDITION  
 Sounding Frequency\*\*\*: 400KHZ

Vertical Datum:  
 Soundings are shown in feet and indicate depths below Mean Low Gulf Datum (MLG).  
 The location of navigation aids are base on and provided by the U.S. Coast Guard.  
 2015 Aerial Photography data source: NAIP: 1998 DOQQ imagery shown in green from USGS.  
 Reference is N.O.A. Navigation Chart No. 11350.  
 \*\* Shoalest Sounding per Quarter per Reach.  
 \*\*\* High frequency (200 kHz) survey data represents the first signal return at a sounding location and will include suspended solids, known as "fluff", if present. Low frequency (20 kHz) survey data normally penetrates through this "fluff" layer to depict elevations of consolidated bottom material. Low frequency accuracies may vary depending on channel conditions and fathometer settings.

**NOTES:**

Horizontal Coordinate System:  
North American Datum of 1983 (NAD83), projected to the State Plane Coordinate System (SPCS), Louisiana South Zone. Distance units in U.S. Survey Feet.

Vertical Datum:  
Soundings are shown in feet and indicate depths below Mean Low Gulf Datum (MLG).  
The location of navigation aids are base on and provided by the U.S. Coast Guard.

2015 Aerial Photography data source: NAIP: 1998 DOQQ imagery shown in green from USGS.

Reference is N.O.A. Navigation Chart No. 11350.

\*\* Shoalest Sounding per Quarter per Reach.

\*\*\* High frequency (200 kHz) survey data represents the first signal return at a sounding location and will include suspended solids, known as "fluff", if present. Low frequency (20 kHz) survey data normally penetrates through this "fluff" layer to depict elevations of consolidated bottom material. Low frequency accuracies may vary depending on channel conditions and fathometer settings.



**DISCLAIMER:**

The United States Government furnishes these data and the recipient accepts and uses them with the express understanding that the data are not warranted for any purpose other than that for which they were collected. The user is responsible for the results of any use of the data for other than its intended purpose. The application of the data for other than its intended purpose may result in injury or damage to persons or property. The user assumes all liability for any use of the data for other than its intended purpose. These data are not to be used for any purpose other than that for which they were collected. The user is responsible for the results of any use of the data for other than its intended purpose. The application of the data for other than its intended purpose may result in injury or damage to persons or property. The user assumes all liability for any use of the data for other than its intended purpose.

Submitted:	Surveyed By: SPJS
Recommended: Chief, Survey Section	Plotted By: JH
Approved: Chief, Waterways Maintenance Section	Checked By: JH

U.S. ARMY CORPS OF ENGINEERS  
NEW ORLEANS DISTRICT

**BAYOU TECHE**  
**KEYSTONE LOCK - DOWNSTREAM**  
**TC\_53\_KEY\_20240502\_CS\_1X1**  
**02 May 2024**

**Sheet Reference Number**  
**53 of 74**