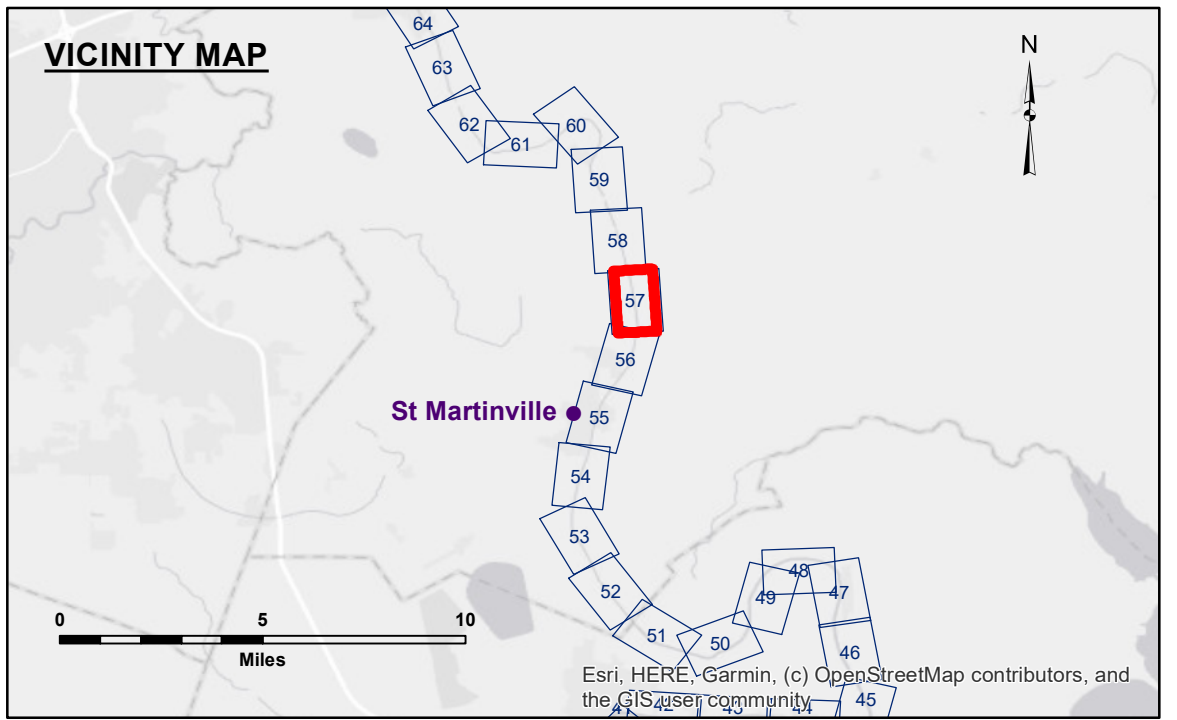




Access/Disclaimer: The United States Government makes these data and the recipient accepts and uses them with the express understanding that they are provided for informational purposes only. It is not intended for use in any other manner. The user is responsible for the results of any use of these data. The information depicted on this map represents the results of a survey conducted by the United States Army Corps of Engineers. The information is provided for informational purposes only. It is not intended for use in any other manner. The user is responsible for the results of any use of these data. The information depicted on this map represents the results of a survey conducted by the United States Army Corps of Engineers. The information is provided for informational purposes only. It is not intended for use in any other manner. The user is responsible for the results of any use of these data.

U.S. ARMY CORPS OF ENGINEERS NEW ORLEANS DISTRICT		
Submitted:	Surveyed By: PM,LT	
Recommended: Chief, Survey Section	Plotted By: JHI	
Approved: Chief, Waterways Maintenance Section	Checked By: AC	

**BAYOU TECHE
KEYSTONE TO ARNAUDVILLE
TC_57_K2A_20241107_CS_1X1
07 November 2024**



LEGEND			
--- Federal Navigation Channel	○ Cable Area	□ Borrow Area	■ +5' and above
— Federal Navigation Center Line	□ Placement Area	● Shoalest Sounding**	■ +5' to -6'
— As-built Pipeline/Cable	□ Anchorage Area	★ Beacon, General	■ -6' to -8'
..... Unconfirmed Pipeline/Cable	⊗ Obstruction Point	◆ Red Navigation Buoy	■ -8' to -15'
— Project Depth Contour	⚓ Wrecks-Submerged	◆ Green Navigation Buoy	■ -15' to -20'
			■ -20' to -25'
			■ -25' to -30'
			■ -30' and below

Gage Reading: VRN RTK: 11.3 MLG
Sea Conditions: CALM
Vessel Name: OB169
Survey Type: CS
Sounding Frequency*:** 400KHZ

NOTES:
 Horizontal Coordinate System: North American Datum of 1983 (NAD83), projected to the State Plane Coordinate System (SPCS), Louisiana South Zone. Distance units in U.S. Survey Feet.
 Vertical Datum: Soundings are shown in feet and indicate depths below Mean Low Gulf Datum (MLG).
 The location of navigation aids are base on and provided by the U.S. Coast Guard.
 2015 Aerial Photography data source: NAIP. 1998 DOQQ imagery shown in green from USGS.
 Reference is N.O.A.A. Navigation Chart No. 11350.
 *** Shoalest Sounding per Quarter per Reach.
 ** High frequency (200 kHz) survey data represents the first signal return at a sounding location and will include suspended solids, known as "fluff", if present. Low frequency (20 kHz) survey data normally penetrates through this "fluff" layer to depict elevations of consolidated bottom material. Low frequency accuracies may vary depending on channel conditions and fathometer settings.

**Sheet
Reference
Number
57 of 74**

Revision Number:
4.2-20240420