



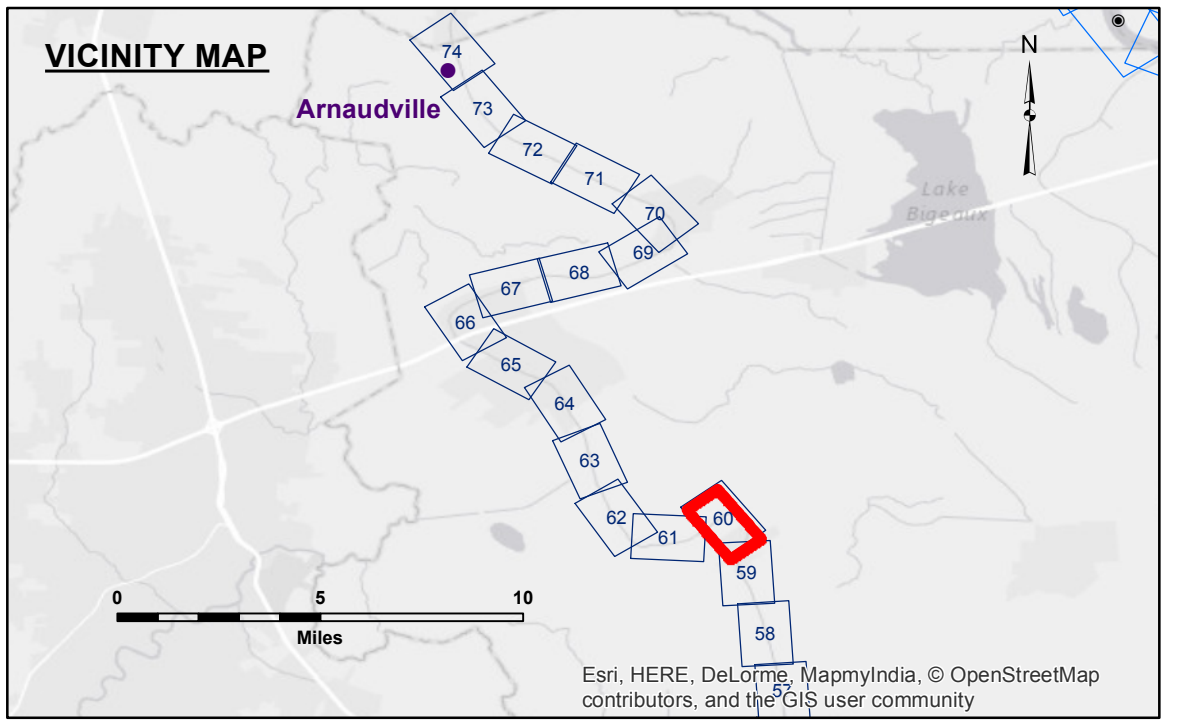
**Access/Use:** The United States Government furnishes these data and the recipient accepts and uses them with the express understanding that they are not to be used for any purpose other than that for which they were prepared, and that the user is responsible for the results of any use of the data for other than its intended purpose.

**Access/Use:** The United States Government furnishes these data and the recipient accepts and uses them with the express understanding that they are not to be used for any purpose other than that for which they were prepared, and that the user is responsible for the results of any use of the data for other than its intended purpose.

**Access/Use:** The United States Government furnishes these data and the recipient accepts and uses them with the express understanding that they are not to be used for any purpose other than that for which they were prepared, and that the user is responsible for the results of any use of the data for other than its intended purpose.

U.S. ARMY CORPS OF ENGINEERS NEW ORLEANS DISTRICT		
Submitted:	Surveyed By: DR.PM	Plotted By: AO
Recommended: Chief, Survey Section	Checked By: AO	Checked By: AO
Approved:	Chief, Waterways Maintenance Section	

**BAYOU TECHE**  
**KEYSTONE TO ARNAUDVILLE**  
**TC\_60\_K2A\_20090903**  
**03 September 2009**



LEGEND			
--- Federal Navigation Channel	○ Cable Area	□ Borrow Area	■ -6' and above
— Federal Navigation Center Line	□ Placement Area	● Shoalest Sounding**	■ -6' to -8'
— As-built Pipeline/Cable	□ Anchorage Area	★ Beacon, General	■ -8' to -15'
..... Unconfirmed Pipeline/Cable	⊗ Obstruction Point	◆ Red Navigation Buoy	■ -15' to -20'
— Project Depth Contour	⚓ Wrecks-Submerged	◆ Green Navigation Buoy	■ -20' to -25'
			■ -25' to -30'
			■ -30' and below

**NOTES:**

Horizontal Coordinate System:  
North American Datum of 1983 (NAD83), projected to the State Plane Coordinate System (SPCS), Louisiana South Zone. Distance units in U.S. Survey Feet.

Vertical Datum:  
Soundings are shown in feet and indicate depths below Mean Low Gulf Datum (MLG).

The location of navigation aids are base on and provided by the U.S. Coast Guard.

2015 Aerial Photography data source: NAIP 1998 DOQQ imagery shown in green from USGS.

Reference is N.O.A.A. Navigation Chart No. 11350.

\*\* Shoalest Sounding per Quarter per Reach.

\*\*\* High frequency (200 kHz) survey data represents the first signal return at a sounding location and will include suspended solids, known as "fluff", if present. Low frequency (20 kHz) survey data normally penetrates through this "fluff" layer to depict elevations of consolidated bottom material. Low frequency accuracies may vary depending on channel conditions and fathometer settings.

Gage Reading: RUTH CANAL: 8.8 NGVD  
Sea Conditions: CALM  
Vessel Name: MV OB-189  
Survey Type: CONDITION  
Sounding Frequency\*\*\*: HIGH

**Sheet Reference Number**  
**60 of 74**

Revision Number:  
3.816-2115(2)12