



**Access/Obstruction:** The United States Government makes these data and the recipient accept and uses them with the express understanding that the data are not intended for navigation, and that the user is responsible for the accuracy, completeness, readability, usability or suitability for any particular purpose of the data. The user is responsible for the accuracy, completeness, readability, usability or suitability for any particular purpose of the data. The user is responsible for the accuracy, completeness, readability, usability or suitability for any particular purpose of the data. The user is responsible for the accuracy, completeness, readability, usability or suitability for any particular purpose of the data.

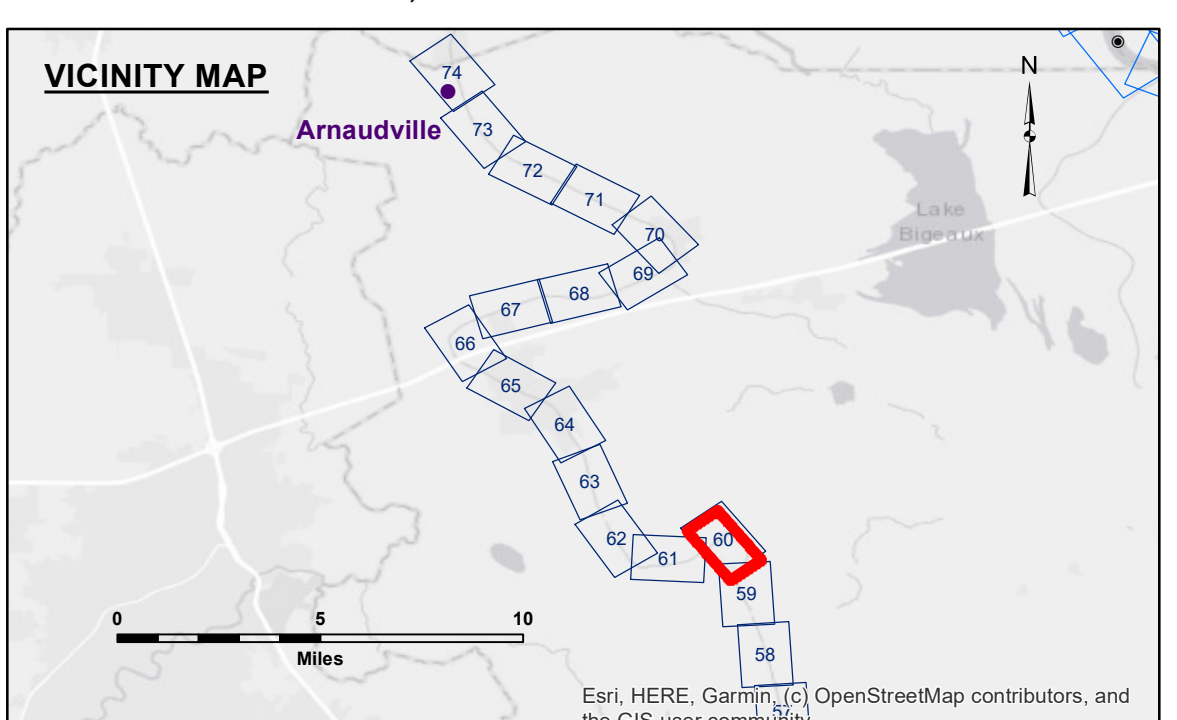
**Data Constraints:** Hydrographic survey data is subject to change rapidly due to several factors including but not limited to changing hydrographic conditions which develop after the date of the survey. The user is responsible for the accuracy, completeness, readability, usability or suitability for any particular purpose of the data. The user is responsible for the accuracy, completeness, readability, usability or suitability for any particular purpose of the data.

**Disclaimer:** The information depicted on this map represents the results of a survey conducted by the United States Army Corps of Engineers. The information is not intended to be used for navigation. The user is responsible for the accuracy, completeness, readability, usability or suitability for any particular purpose of the data. The user is responsible for the accuracy, completeness, readability, usability or suitability for any particular purpose of the data.

Submitted:	Surveyed By: PM,LT
Recommended: Chief Survey Section	Plotted By: JH
Approved: Chief Waterways Maintenance Section	Checked By: AC

U.S. ARMY CORPS OF ENGINEERS  
NEW ORLEANS DISTRICT

**BAYOU TECHE**  
**KEYSTONE TO ARNAUDVILLE**  
**TC\_60\_KZA\_20241106\_CS\_1X1**  
**06 November 2024**



**LEGEND**

--- Federal Navigation Channel	○ Cable Area	□ Borrow Area	■ +5' and above
— Federal Navigation Center Line	□ Placement Area	● Shoalest Sounding**	■ +5' to -6'
— As-built Pipeline/Cable	□ Anchorage Area	★ Beacon, General	■ -6' to -8'
..... Unconfirmed Pipeline/Cable	⊗ Obstruction Point	◆ Red Navigation Buoy	■ -8' to -15'
— Project Depth Contour	⚓ Wrecks-Submerged	◆ Green Navigation Buoy	■ -15' to -20'
			■ -20' to -25'
			■ -25' to -30'
			■ -30' and below

**NOTES:**

Horizontal Coordinate System:  
North American Datum of 1983 (NAD83), projected to the State Plane Coordinate System (SPCS), Louisiana South Zone. Distance units in U.S. Survey Feet.

Vertical Datum:  
Soundings are shown in feet and indicate depths below Mean Low Gulf Datum (MLG).

The location of navigation aids are base on and provided by the U.S. Coast Guard.

2015 Aerial Photography data source: NAIP. 1998 DOQQ imagery shown in green from USGS.

Reference is N.O.A.A. Navigation Chart No. 11350.

\*\* Shoalest Sounding per Quarter per Reach.

\*\*\* High frequency (200 kHz) survey data represents the first signal return at a sounding location and will include suspended solids, known as "fluff", if present. Low frequency (20 kHz) survey data normally penetrates through this "fluff" layer to depict elevations of consolidated bottom material. Low frequency accuracies may vary depending on channel conditions and fathometer settings.

Gage Reading: VRN RTK: 11.3 MLG  
Sea Conditions: CALM  
Vessel Name: OB169  
Survey Type: CS  
Sounding Frequency\*\*\*: 400KHZ