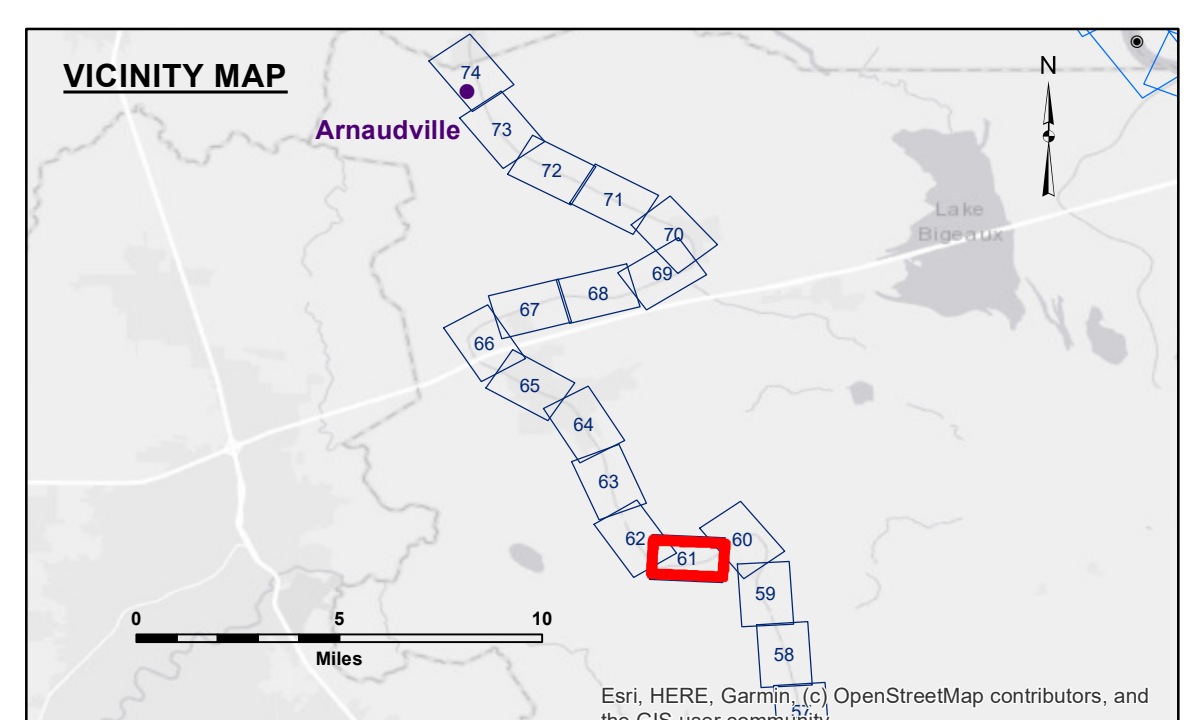


3,115,000

3,118,000

626,000

626,000



LEGEND			
--- Federal Navigation Channel	○ Cable Area	□ Borrow Area	■ +5' and above
— Federal Navigation Center Line	□ Placement Area	● Shoalest Sounding**	■ +5' to -6'
— As-built Pipeline/Cable	□ Anchorage Area	★ Beacon, General	■ -6' to -8'
..... Unconfirmed Pipeline/Cable	⊗ Obstruction Point	◆ Red Navigation Buoy	■ -8' to -15'
— Project Depth Contour	⚓ Wrecks-Submerged	◆ Green Navigation Buoy	■ -15' to -20'
			■ -20' to -25'
			■ -25' to -30'
			■ -30' and below

Gage Reading: VRN RTK: 11.3 MLG  
 Sea Conditions: CALM  
 Vessel Name: OB169  
 Survey Type: CS  
 Sounding Frequency\*\*\*: 400KHZ

Vertical Datum:  
 Soundings are shown in feet and indicate depths below Mean Low Gulf Datum (MLG).  
 The location of navigation aids are base on and provided by the U.S. Coast Guard.  
 2015 Aerial Photography data source: NAIP. 1998 DOQQ imagery shown in green from USGS.  
 Reference is N.O.A. Navigation Chart No. 11350.

\*\* Shoalest Sounding per Quarter Per Reach.  
 \*\*\* High frequency (200 kHz) survey data represents the first signal return at a sounding location and will include suspended solids, known as "fluff", if present. Low frequency (20 kHz) survey data normally penetrates through this "fluff" layer to depict elevations of consolidated bottom material. Low frequency accuracies may vary depending on channel conditions and fathometer settings.



**Access Constraints:** The United States Government sometimes these data and the recipient accepts and uses them with the express understanding that the data is provided for informational purposes only. The user is responsible for the accuracy, completeness, reliability, usability or suitability for any particular purpose of the data. The user is responsible for the accuracy, completeness, reliability, usability or suitability for any particular purpose of the data. The user is responsible for the accuracy, completeness, reliability, usability or suitability for any particular purpose of the data.

U.S. ARMY CORPS OF ENGINEERS NEW ORLEANS DISTRICT		
Submitted:	Surveyed By: PM,LT	
Recommended: Chief, Survey Section	Plotted By: JHI	
Approved: Chief, Waterways Maintenance Section	Checked By: AC	

**BAYOU TECHE**  
**KEYSTONE TO ARNAUDVILLE**  
**TC\_61\_KZA\_20241106\_CS\_1X1**  
**06 November 2024**

**Sheet**  
**Reference**  
**Number**  
**61 of 74**