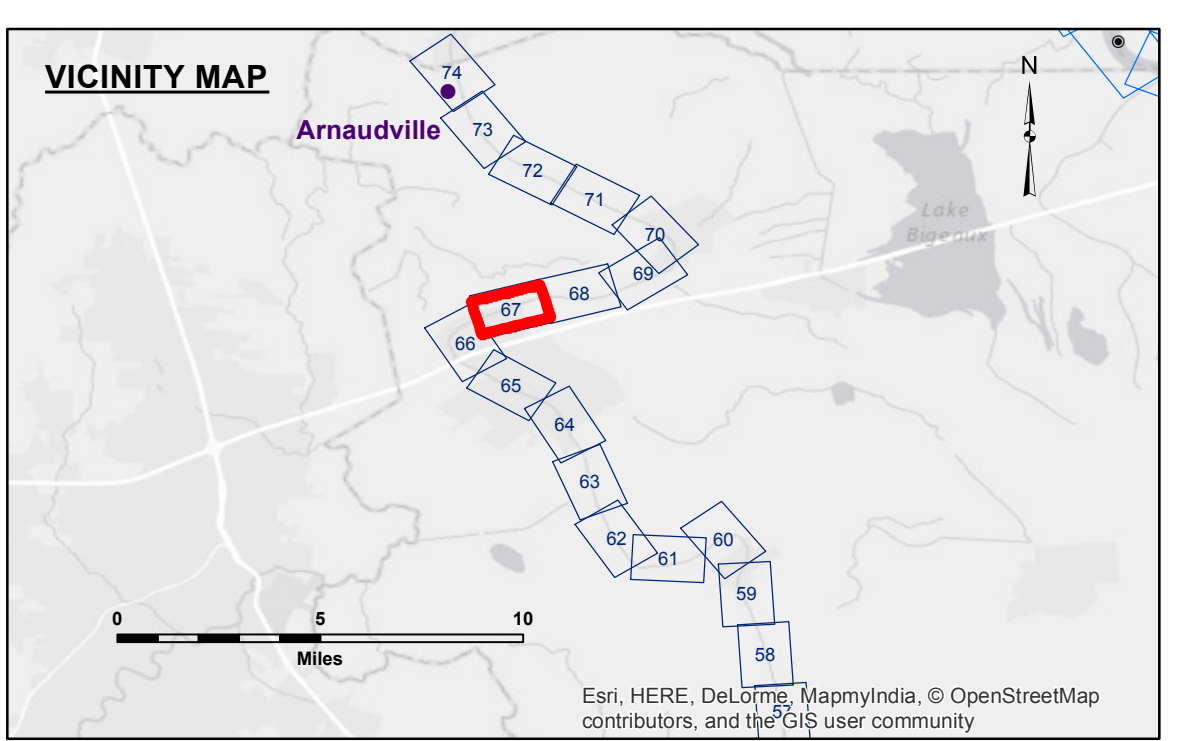


**Access/Use:** The United States Government furnishes these data and the recipient accepts and uses them with the express understanding that they are for official use only and are not to be used for any other purpose. The user is responsible for the accuracy, completeness, readability, usability or suitability, for any particular purpose of the information. The user is responsible for the accuracy, completeness, readability, usability or suitability, for any particular purpose of the information. The user is responsible for the accuracy, completeness, readability, usability or suitability, for any particular purpose of the information.

**Access/Use:** The United States Government furnishes these data and the recipient accepts and uses them with the express understanding that they are for official use only and are not to be used for any other purpose. The user is responsible for the accuracy, completeness, readability, usability or suitability, for any particular purpose of the information. The user is responsible for the accuracy, completeness, readability, usability or suitability, for any particular purpose of the information.

U.S. ARMY CORPS OF ENGINEERS NEW ORLEANS DISTRICT	
Submitted:	Surveyed By: DR.PM
Recommended: Chief, Survey Section	Plotted By: AO
Approved: Chief, Waterways Maintenance Section	Checked By: AO

**BAYOU TECHE  
KEYSTONE TO ARNAUDVILLE  
TC\_67\_K2A\_20090903  
03 September 2009**



LEGEND			
--- Federal Navigation Channel	○ Cable Area	□ Borrow Area	■ -6' and above
— Federal Navigation Center Line	□ Placement Area	● Shoalest Sounding**	■ -6' to -8'
— As-built Pipeline/Cable	□ Anchorage Area	★ Beacon, General	■ -8' to -15'
..... Unconfirmed Pipeline/Cable	⊗ Obstruction Point	◆ Red Navigation Buoy	■ -15' to -20'
— Project Depth Contour	⚓ Wrecks-Submerged	◆ Green Navigation Buoy	■ -20' to -25'
			■ -25' to -30'
			■ -30' and below

Gage Reading: RUTH CANAL: 8.8 NGVD  
 Sea Conditions: CALM  
 Vessel Name: MV OB-189  
 Survey Type: CONDITION  
 Sounding Frequency\*\*\*: HIGH

**NOTES:**  
 Horizontal Coordinate System:  
 North American Datum of 1983 (NAD83), projected to the State Plane Coordinate System (SPCS), Louisiana South Zone. Distance units in U.S. Survey Feet.  
 Vertical Datum:  
 Soundings are shown in feet and indicate depths below Mean Low Gulf Datum (MLG).  
 The location of navigation aids are base on and provided by the U.S. Coast Guard.  
 2015 Aerial Photography data source: NAIP. 1998 DOQQ imagery shown in green from USGS.  
 Reference is N.O.A.A. Navigation Chart No. 11350.  
 \*\*\* Shoalest Sounding per Quarter per Reach.  
 \*\*\*\* High frequency (200 kHz) survey data represents the first signal return at a sounding location and will include suspended solids, known as "fluff", if present. Low frequency (20 kHz) survey data normally penetrates through this "fluff" layer to depict elevations of consolidated bottom material. Low frequency accuracies may vary depending on channel conditions and fathometer settings.

**Sheet  
Reference  
Number  
67 of 74**