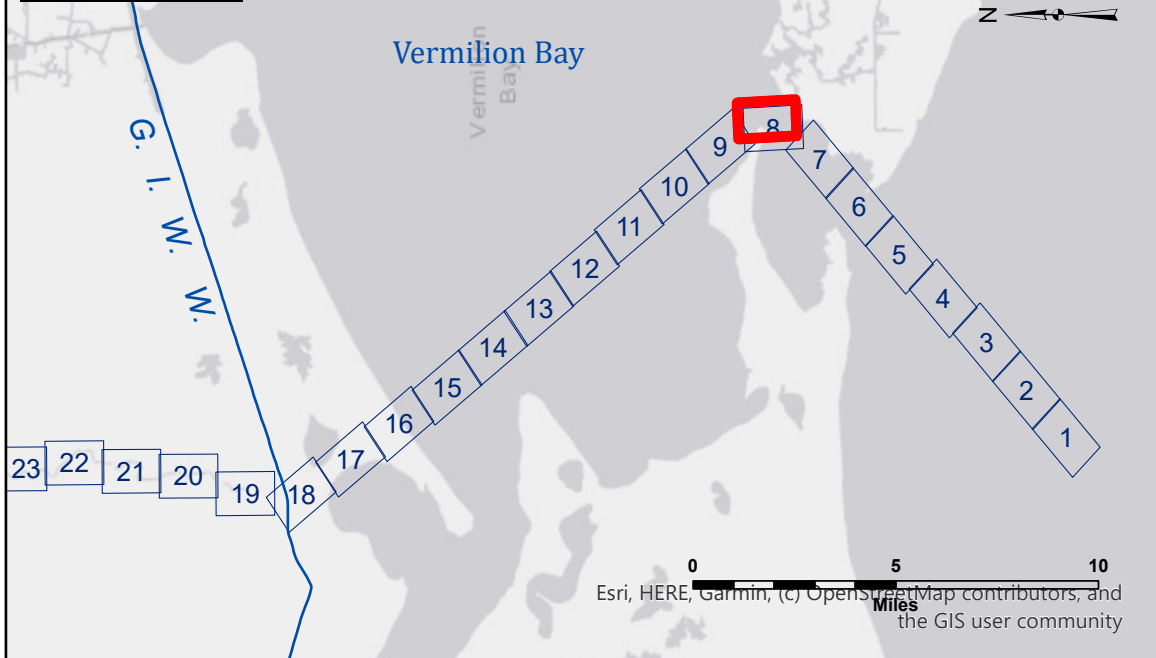
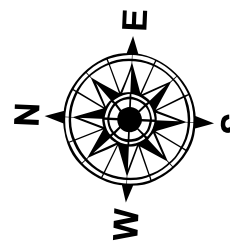


VICINITY MAP



LEGEND

- Federal Navigation Channel
- Federal Navigation Center Line
- As-built Pipeline/Cable
- ..... Unconfirmed Pipeline/Cable
- Project Depth Contour
- Cable Area
- Placement Area
- Anchorage Area
- ⊗ Obstruction Point
- ✈ Wrecks-Submerged
- Borrow Area
- Shoalest Sounding\*\*
- ★ Beacon, General
- ♦ Red Navigation Buoy
- ◆ Green Navigation Buoy
- -8' and above
- -8' and below



Gage Reading: LELAND BOWMEN EAST: 3.70 MLG  
Sea Conditions: CHOPPY  
Vessel Name: OB-189  
Survey Type: SB  
Sounding Frequency\*\*\*: 24KHZ



NOTES:

Horizontal Coordinate System:  
North American Datum of 1983 (NAD83), projected to the State Plane  
Coordinate System (SPCS), Louisiana South Zone. Distance units in U.S. Survey Feet.  
Vertical Datum:  
Soundings are shown in feet and indicate depths below Mean Low Gulf Datum (MLG).  
Datum Relationships for gage 76720 as of August 2014:  
0.0' NAVD88 (OPUS 2014) = 2.08' MLG  
Distances on the Vermilion River are shown at 1 mile intervals.  
The location of navigation aids are base on and provided by the U.S. Coast Guard  
and USACE survey crews.  
2021 Aerial Photography data source: NAIP  
Reference is N.O.A.A. Navigation Chart No. 11350.  
\*\* Shoalest Sounding per Quarter per Reach.  
\*\*\* High frequency (200 kHz) survey data represents the first signal return at a sounding  
location and will include suspended solids, known as "fluff", if present. Low frequency (20 kHz)  
survey data normally penetrates through this "fluff" layer to depict elevations of consolidated bottom  
material. Low frequency accuracies may vary depending on channel conditions and fathometer  
settings.



US Army Corps  
of Engineers  
District: CEMVN

**Disclaimer:** The data represents the results of data collection/processing for a specific US Army Corps of Engineers activity and indicates the general existing conditions. As such, the data is not intended for use in any other manner than the intended purpose. The user is responsible for the results of any of the application of the data for other than its intended purpose. The data is not intended for use in any other manner than the intended purpose. The user is responsible for the results of any of the application of the data for other than its intended purpose. The data is not intended for use in any other manner than the intended purpose. The user is responsible for the results of any of the application of the data for other than its intended purpose.

**DISCLAIMER:** The United States Government furnishes these data and the recipient accepts and uses them with the express understanding that the data is not intended for use in any other manner than the intended purpose. The user is responsible for the results of any of the application of the data for other than its intended purpose. The data is not intended for use in any other manner than the intended purpose. The user is responsible for the results of any of the application of the data for other than its intended purpose. The data is not intended for use in any other manner than the intended purpose. The user is responsible for the results of any of the application of the data for other than its intended purpose.

U.S. ARMY CORPS OF ENGINEERS NEW ORLEANS DISTRICT			
Submitted:	Surveyed By: PM,LT	Plotted By: BD	Checked By: AOJH
Recommended: Chief Survey Section			
Approved: Chief Waterways Maintenance Section			

VERMILION RIVER  
SOUTHWEST PASS  
VM\_08\_SWP\_20250416\_CS  
16 April 2025

Sheet  
Reference  
Number  
08 of 49

Revision Number:  
5.25.04.03-5.25.04.03