



US Army Corps of Engineers District: CEMV

Access/Use: The United States Government furnishes these data and the recipient accepts and uses them with the express understanding that the data are not to be used for any purpose other than that for which they were originally collected, and that the user is responsible for the results of any use of the data for other than its intended purpose.

Data Constraints: Hydrographic survey data is subject to change rapidly due to several factors including but not limited to: changing bathymetry, shifting sandbars, and other hydrographic changes. The user is responsible for the results of any use of the data for other than its intended purpose.

Disclaimer: The information depicted on this map represents the results of a survey conducted on or about the date of publication. The Corps of Engineers does not warrant the accuracy of the information for any purpose other than that for which it was collected. The Corps of Engineers does not accept responsibility for changes in the hydrographic conditions which develop after the date of publication. Product maintainers should not rely solely upon this information.

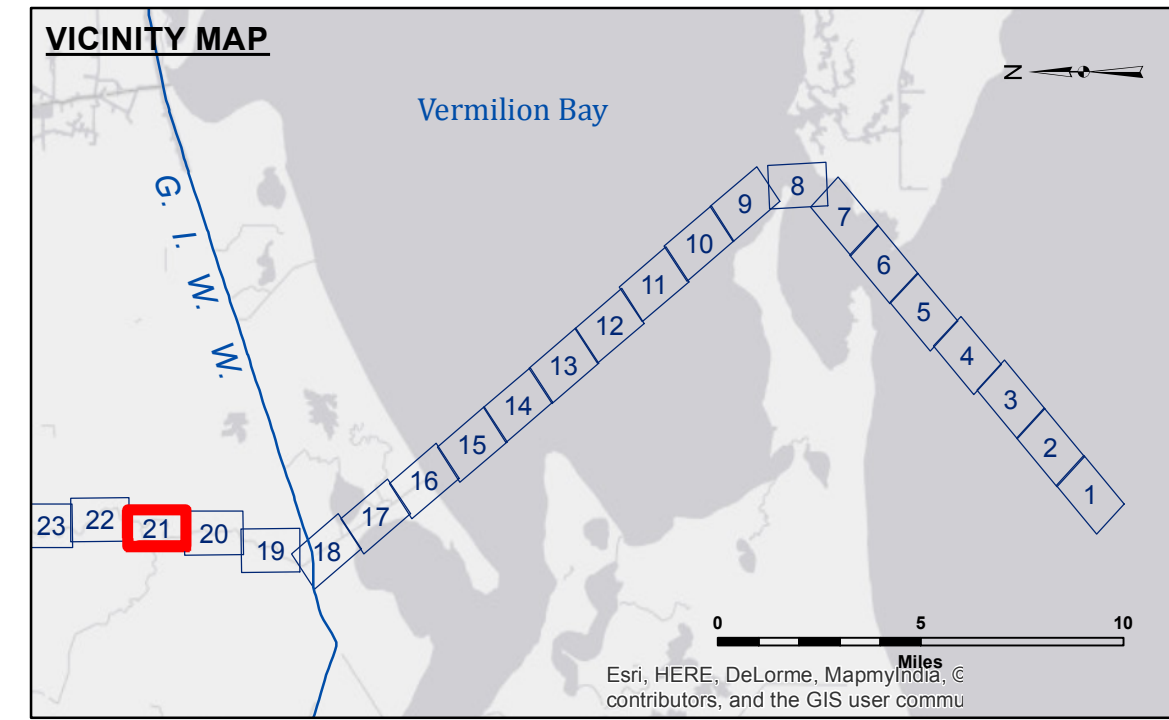
Access/Use: The United States Government furnishes these data and the recipient accepts and uses them with the express understanding that the data are not to be used for any purpose other than that for which they were originally collected, and that the user is responsible for the results of any use of the data for other than its intended purpose.

Data Constraints: Hydrographic survey data is subject to change rapidly due to several factors including but not limited to: changing bathymetry, shifting sandbars, and other hydrographic changes. The user is responsible for the results of any use of the data for other than its intended purpose.

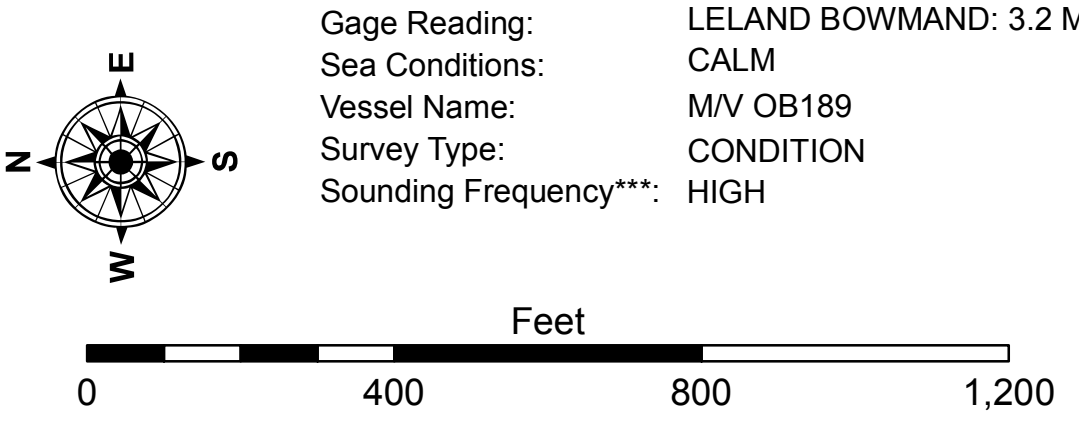
Disclaimer: The information depicted on this map represents the results of a survey conducted on or about the date of publication. The Corps of Engineers does not warrant the accuracy of the information for any purpose other than that for which it was collected. The Corps of Engineers does not accept responsibility for changes in the hydrographic conditions which develop after the date of publication. Product maintainers should not rely solely upon this information.

| | |
|--|----------------|
| U.S. ARMY CORPS OF ENGINEERS NEW ORLEANS DISTRICT | |
| Submitted: | RYLAND/ADAMS |
| Recommended: | Checked By: AO |
| Approved: | Checked By: AO |

VERMILION RIVER
GIWW TO PERRY
VM_21_UPR_20170509_CS
09 May 2017



| LEGEND | | | |
|----------------------------------|---------------------|-------------------------|-----------------|
| --- Federal Navigation Channel | ○ Cable Area | □ Borrow Area | ■ -9' and above |
| — Federal Navigation Center Line | □ Placement Area | ● Shoalest Sounding** | □ -9' and below |
| — As-built Pipeline/Cable | □ Anchorage Area | ★ Beacon, General | |
| Unconfirmed Pipeline/Cable | ⊗ Obstruction Point | ◆ Red Navigation Buoy | |
| — Project Depth Contour | ⚓ Wrecks-Submerged | ◆ Green Navigation Buoy | |



NOTES:
Horizontal Coordinate System: North American Datum of 1983 (NAD83), projected to the State Plane Coordinate System (SPCS), Louisiana South Zone. Distance units in U.S. Survey Feet.
Vertical Datum: Mean Low Gulf Datum (MLG).
Soundings are shown in feet and indicate depths below Mean Low Gulf Datum (MLG).
Datum Relationships for gage 76720 as of August 2014: 0.0' NAVD83 (OPUS 2014) = 2.08' MLG
Distances on the Vermilion River are shown at 1 mile intervals.
The location of navigation aids are base on and provided by the U.S. Coast Guard and USACE survey crews.
2010 Aerial Photography data source: NAIP. Transparent green imagery from 1998 DOQQ.
Reference is N.O.A. Navigation Chart No. 11350.
** Shoalest Sounding per Quarter per Reach.
*** High frequency (200 kHz) survey data represents the first signal return at a sounding location and will include suspended solids, known as "fluff", if present. Low frequency (20 kHz) survey data normally penetrates through this "fluff" layer to depict elevations of consolidated bottom material. Low frequency accuracies may vary depending on channel conditions and fathometer settings.

Sheet Reference Number
21 of 49

Revision Number: 3.13-20166811