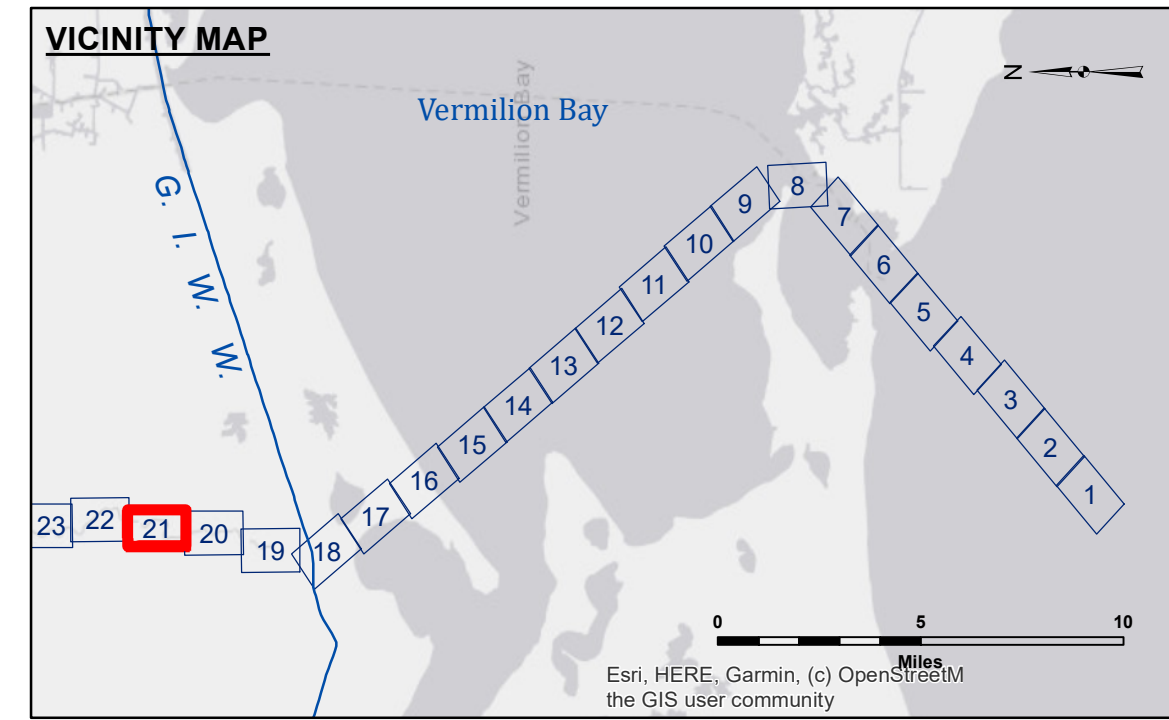
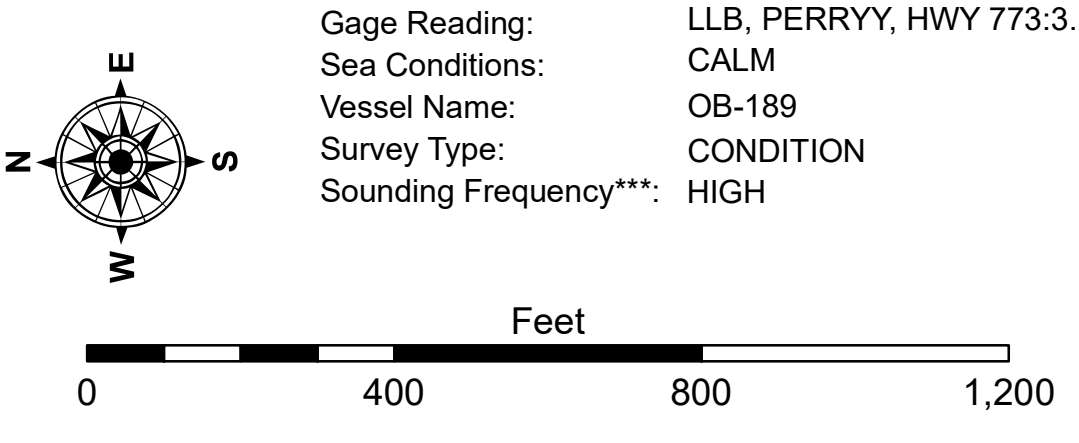


Palmetto Island Park



**LEGEND**

--- Federal Navigation Channel	○ Cable Area	□ Borrow Area	■ -9' and above
— Federal Navigation Center Line	□ Placement Area	● Shoalest Sounding**	□ -9' and below
— As-built Pipeline/Cable	□ Anchorage Area	★ Beacon, General	
..... Unconfirmed Pipeline/Cable	⊗ Obstruction Point	◆ Red Navigation Buoy	
— Project Depth Contour	⚓ Wrecks-Submerged	◆ Green Navigation Buoy	



Gage Reading: LLB, PERRY, HWY 773:3.19 MLG AVG  
 Sea Conditions: CALM  
 Vessel Name: OB-189  
 Survey Type: CONDITION  
 Sounding Frequency\*\*\*: HIGH

**NOTES:**  
 Horizontal Coordinate System: North American Datum of 1983 (NAD83), projected to the State Plane Coordinate System (SPCS), Louisiana South Zone. Distance units in U.S. Survey Feet.  
 Vertical Datum: Soundings are shown in feet and indicate depths below Mean Low Gulf Datum (MLG). Datum Relationships for gage 76720 as of August 2014: 0.0' NAVD83 (OPUS 2014) = 2.08' MLG  
 Distances on the Vermilion River are shown at 1 mile intervals.  
 The location of navigation aids are base on and provided by the U.S. Coast Guard and USACE survey crews.  
 2017 Aerial Photography data source: NAIP. Transparent green imagery from 1998 DOQQ.  
 Reference is N.O.A. Navigation Chart No. 11350.  
 \*\* Shoalest Sounding per Quarter per Reach.  
 \*\*\* High frequency (200 kHz) survey data represents the first signal return at a sounding location and will include suspended solids, known as "fluff", if present. Low frequency (20 kHz) survey data normally penetrates through this "fluff" layer to depict elevations of consolidated bottom material. Low frequency accuracies may vary depending on channel conditions and fathometer settings.



**DISCLAIMER**  
 The United States Government furnishes these data and the recipient accepts and uses them with the express understanding that the Government makes no warranty, expressed or implied, concerning the accuracy, completeness, reliability, usability or suitability for any particular purpose of the data. The user is responsible for the results of any use of the data. The recipient agrees to indemnify the United States Government from and hold it harmless from any and all claims, damages, costs and expenses, including reasonable attorneys' fees, that may be incurred by the United States Government as a result of the recipient's use of the data. The recipient may not transfer these data to others without obtaining the permission of the United States Government. The recipient may not use these data to represent the general condition existing at that time.

U.S. ARMY CORPS OF ENGINEERS NEW ORLEANS DISTRICT		
Submitted:	Surveyed By: RYLAND/HOSHMAN	Plotted By: BD
Recommended:	Chart, Survey Section	Checked By: AC
Approved:	Chart, Waterways Maintenance Section	

**VERMILION RIVER  
 GIWW TO PERRY  
 VM\_21\_UPR\_20190806\_CS  
 06 August 2019**

**Sheet  
 Reference  
 Number  
 21 of 49**

Revision Number:  
 4.0-20190702